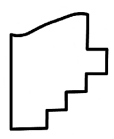
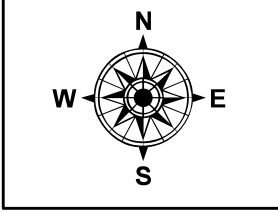
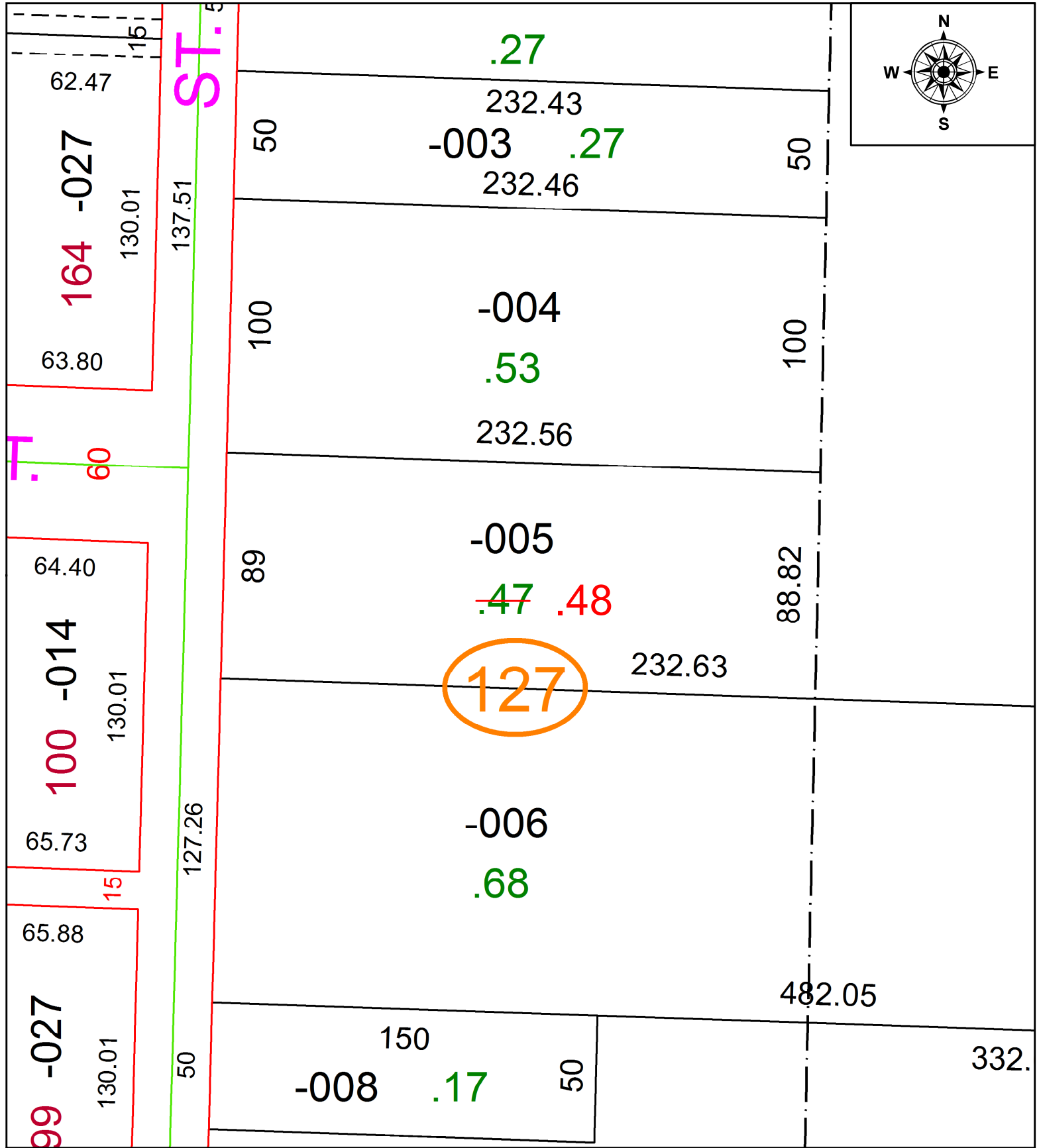


PARENT PARCEL: 03-00-103-127-005

CHILD PARCEL: **AC CORR PER PRIOR DEED**

STARTING POINT: NE CORNER OF GAYLORD SUB RECORDED IN VOL 5 PG 18

21-04685-A



SPLITS/DEEDS PROCESSED
 LORAIN COUNTY TAX MAP DEPARTMENT
 226 MIDDLE AVE. ELYRIA, OH

SURVEYED BY: RAY E. HOLLIS
 CLOSURE: N/A
 MAP PAGE(S): 03-00-103-B
 APPROVED BY: AC DATE: 10/14/2021
 SCALE: 1" = 50 PRIOR INSTRUMENT: 2015-0554401