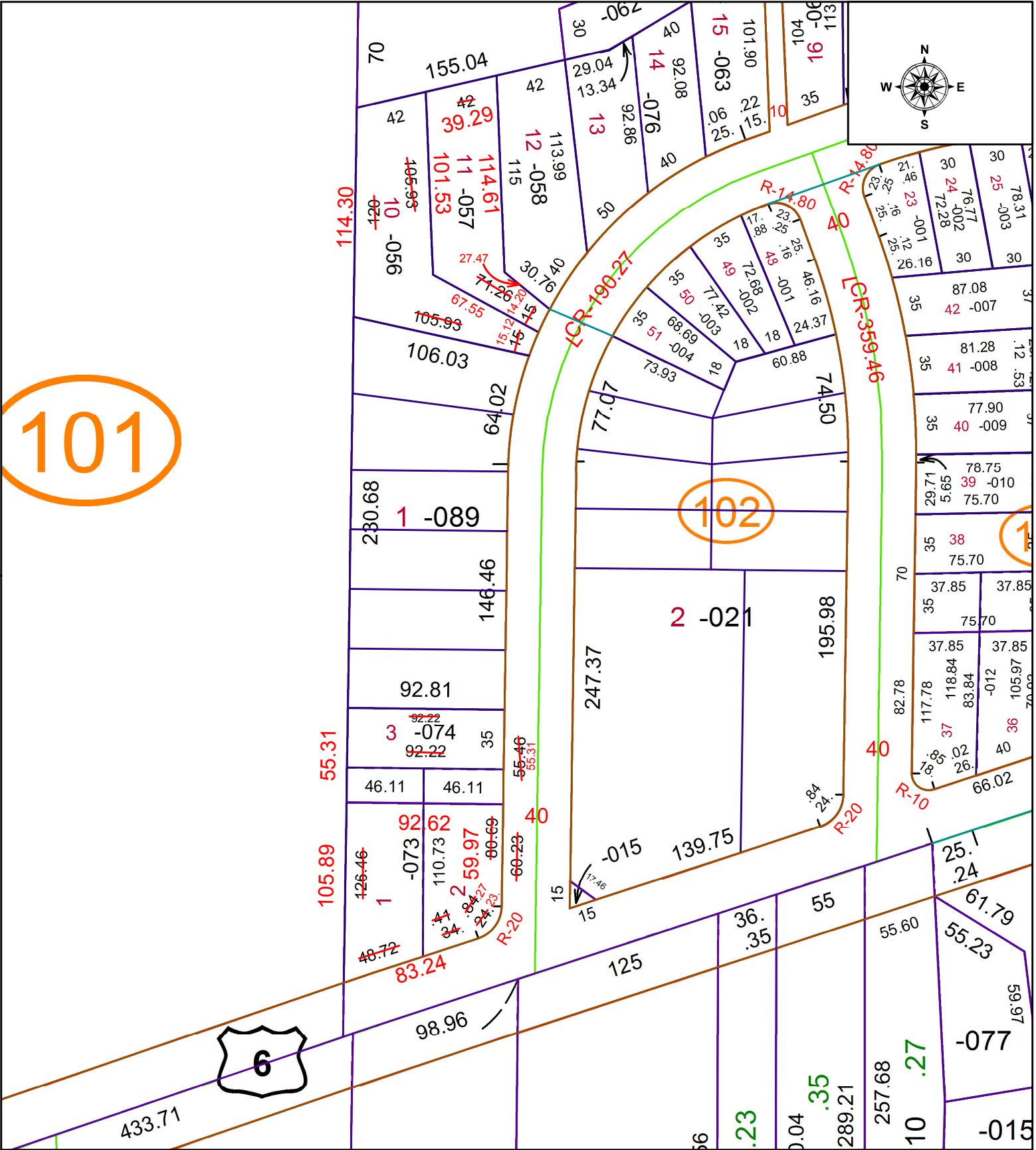


PARENT PARCEL: 04-00-006-101-056, -057, -073, & -074

CHILD PARCEL: N/A

STARTING POINT: INTERSECTION OF C/L'S OF W. SHORE RD & LAKE RD

21-04683-C



101

102

10

6

**SPLITS/DEEDS PROCESSED**

LORAIN COUNTY TAX MAP DEPARTMENT  
226 MIDDLE AVE. ELYRIA, OH

SURVEYED BY: STEVEN J. METCALF

CLOSURE: 1: 155,647

MAP PAGE(S): 04-00-006

APPROVED BY: WRZ DATE: 10/13/2021

SCALE: 1" = 75

PRIOR INSTRUMENT: 2014-0505377