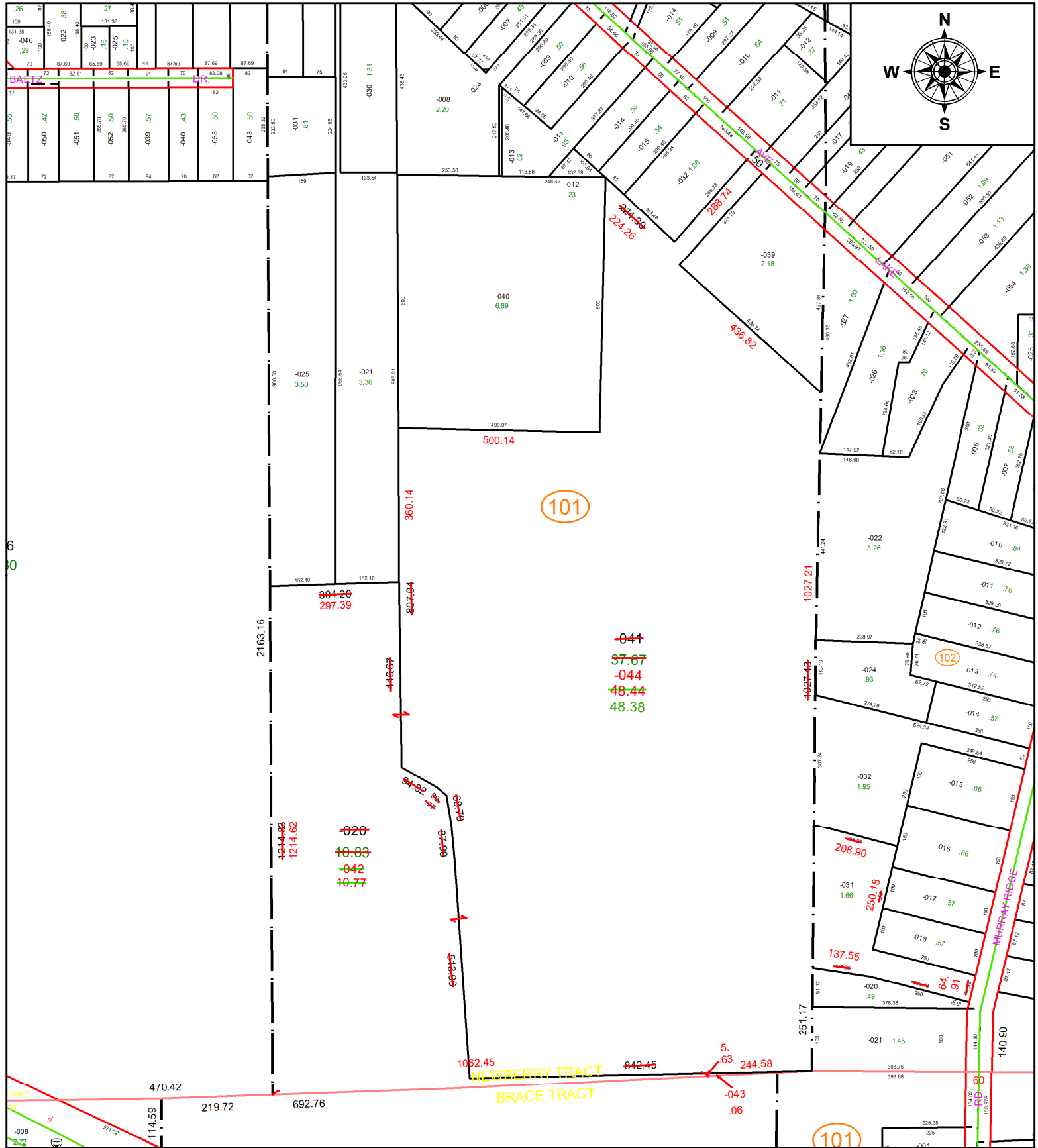


PARENT PARCEL: 06-21-003-101-020, -041, 06-21-004-102-031

CHILD PARCEL: 06-21-003-101-042, -043, -044 & ST:06-21-004-102-031

STARTING POINT: AC CORR PER SURV BY JOHN A. DECHANT JR.

23-04681



SPLITS/DEEDS PROCESSED
 LORAIN COUNTY TAX MAP DEPARTMENT
 226 MIDDLE AVE. ELYRIA, OH

SURVEYED BY: JOHN A. DECHANT JR. **SURV # 50877**
CLOSURE: 1: 1222154
MAP PAGE(S): 06-21-003 & 06-21-004
APPROVED BY: AC **DATE:** April 26, 2023
SCALE: 1 in = 300 ft **PRIOR INSTRUMENT:** 2012- 0425258