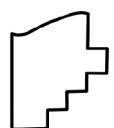
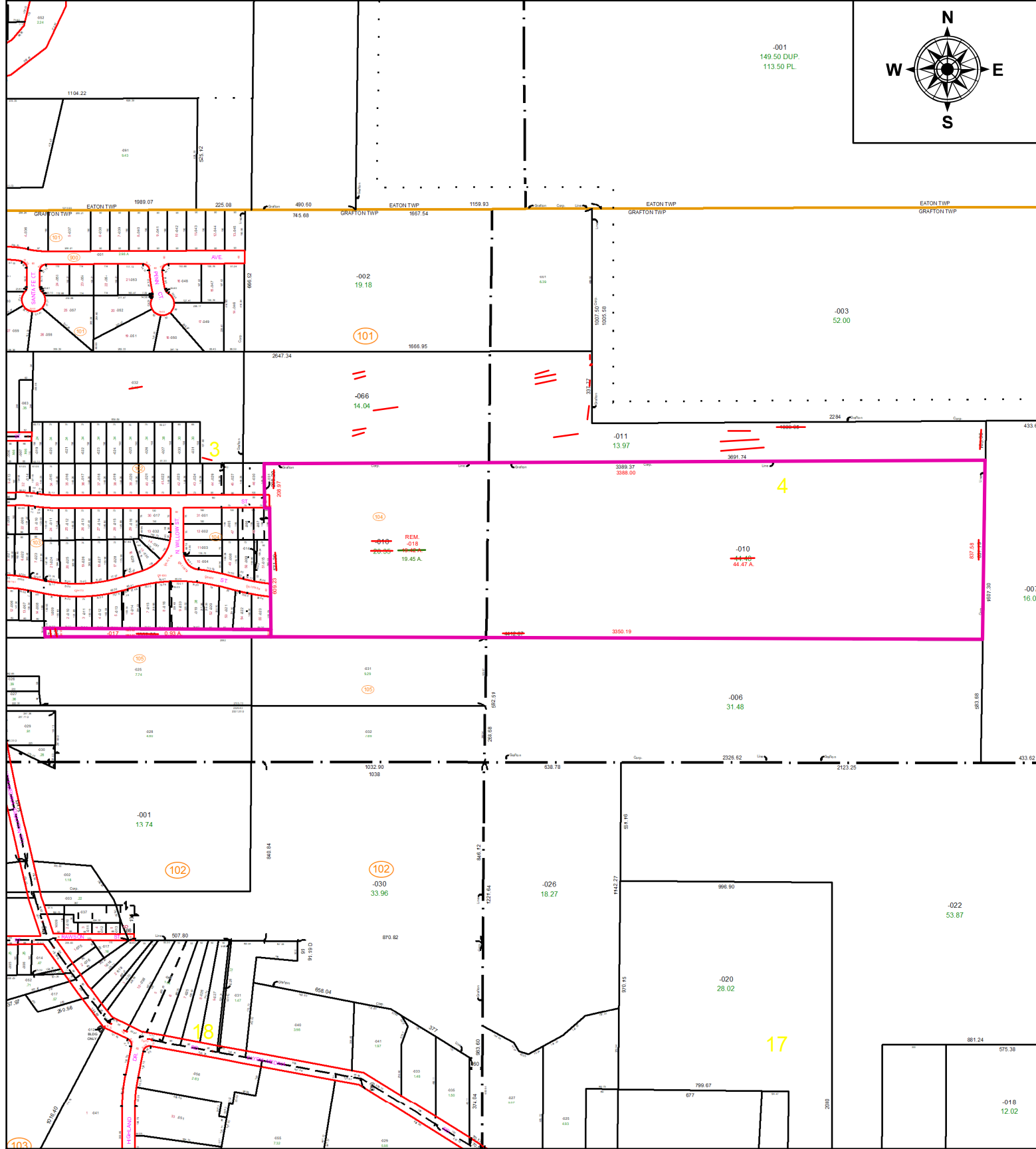
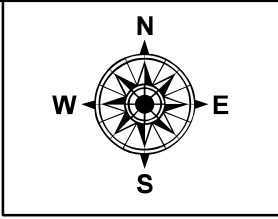


PARENT PARCEL: 16-00-003-104-016

CHILD PARCEL: 16-00-003-104-017 & -018 AC. CORR. 16-00-004-000-010

STARTING POINT: I.P. FD., S.E. CORNER OF S/L 46 IN MYLES KNECHTGES SUB. NO. 3

23-04678



SPLITS/DEEDS PROCESSED
LORAIN COUNTY TAX MAP DEPARTMENT
226 MIDDLE AVE. ELYRIA, OH

SURVEYED BY: MIKE ACKERMAN
CLOSURE: 1:269439
MAP PAGE(S): 16-00-003 & -004
APPROVED BY: TJS **DATE:** 4/24/2023
SCALE: 1" = 600' **PRIOR INSTRUMENT:** 2021-0820169