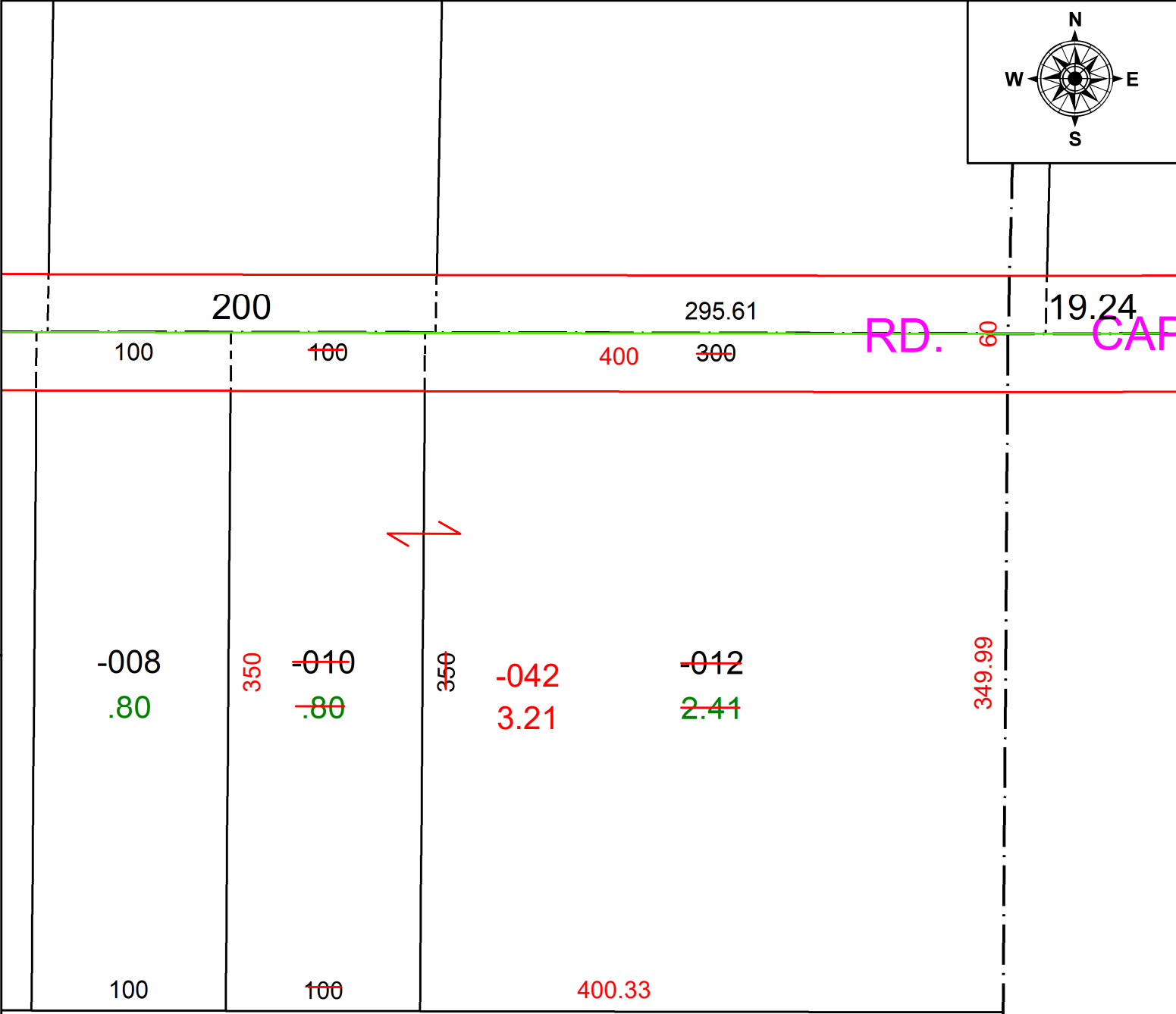
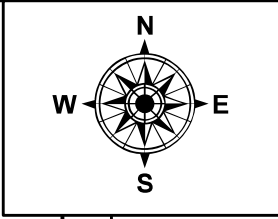


PARENT PARCEL: 12-00-093-000-010 & -012

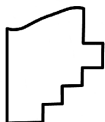
CHILD PARCEL: 12-00-093-000-042

STARTING POINT: C/L OF CAPEL RD AND NE CORNER OF O/L 93

23-04673



720.33



SPLITS/DEEDS PROCESSED
 LORAIN COUNTY TAX MAP DEPARTMENT
 226 MIDDLE AVE. ELYRIA, OH

SURVEYED BY: STAN R. LOCH SURV # 50821
 CLOSURE: 1: 364546
 MAP PAGE(S): 13-00-093
 APPROVED BY: AC DATE: April 17, 2023
 SCALE: 1 in = 75 ft PRIOR INSTRUMENT: 1998- 0528905