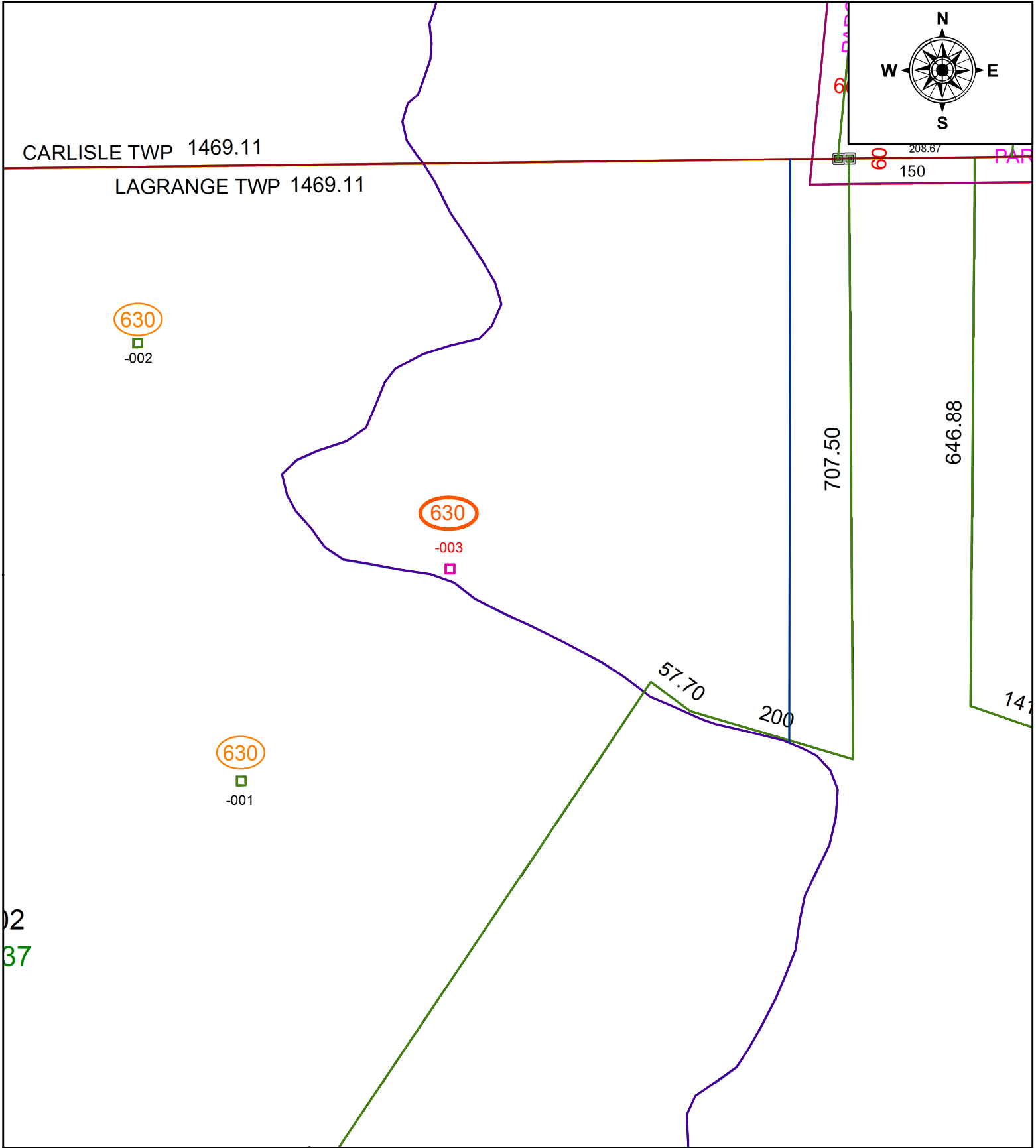


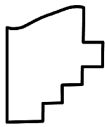
PARENT PARCEL: ADD TO DUPLICATE

CHILD PARCEL: 15-00-001-630-003 GAS WELL API# 34093208390000

STARTING POINT: NA

21-04671-G



 **SPLITS/DEEDS PROCESSED**  
 LORAIN COUNTY TAX MAP DEPARTMENT  
 226 MIDDLE AVE. ELYRIA, OH

SURVEYED BY: NA  
 CLOSURE: NA  
 MAP PAGE(S): 03-00-101  
 APPROVED BY: TJS DATE: 9/22/2021  
 SCALE: 1" = 150' PRIOR INSTRUMENT: NA