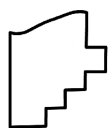
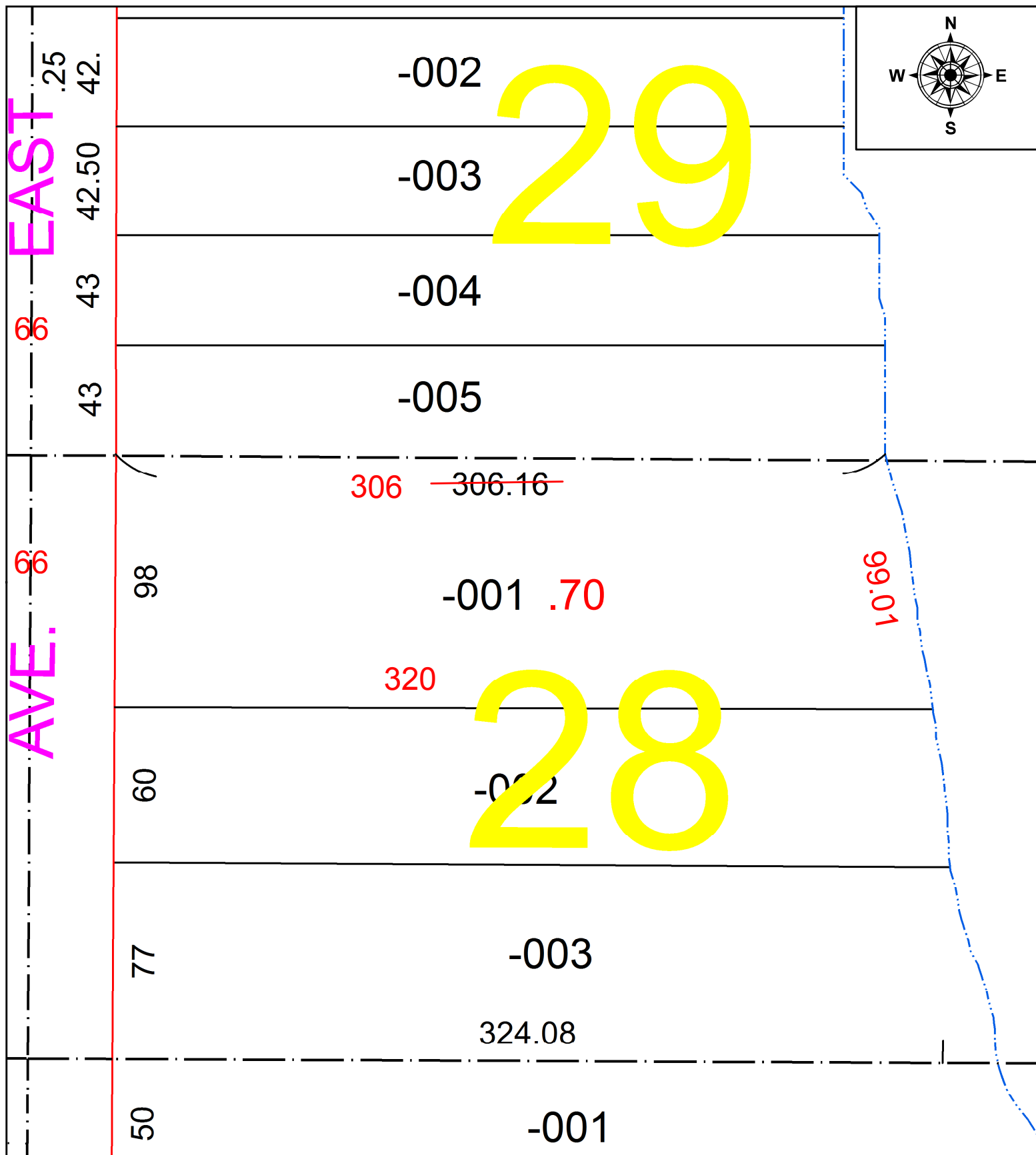


PARENT PARCEL: 06-26-028-000-001

CHILD PARCEL: **MAP CORR. PER SURVEY THOMAS SIMON**

STARTING POINT: N.W. CORNER OF O.L. 28

21-04669-C



SPLITS/DEEDS PROCESSED
 LORAIN COUNTY TAX MAP DEPARTMENT
 226 MIDDLE AVE. ELYRIA, OH

SURVEYED BY: THOMAS SIMON
 CLOSURE: 1: 188151
 MAP PAGE(S): 06-26-028
 APPROVED BY: DMA DATE: 9/22/2021
 SCALE: 1" = 50' PRIOR INSTRUMENT: 20170636016