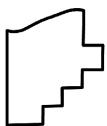
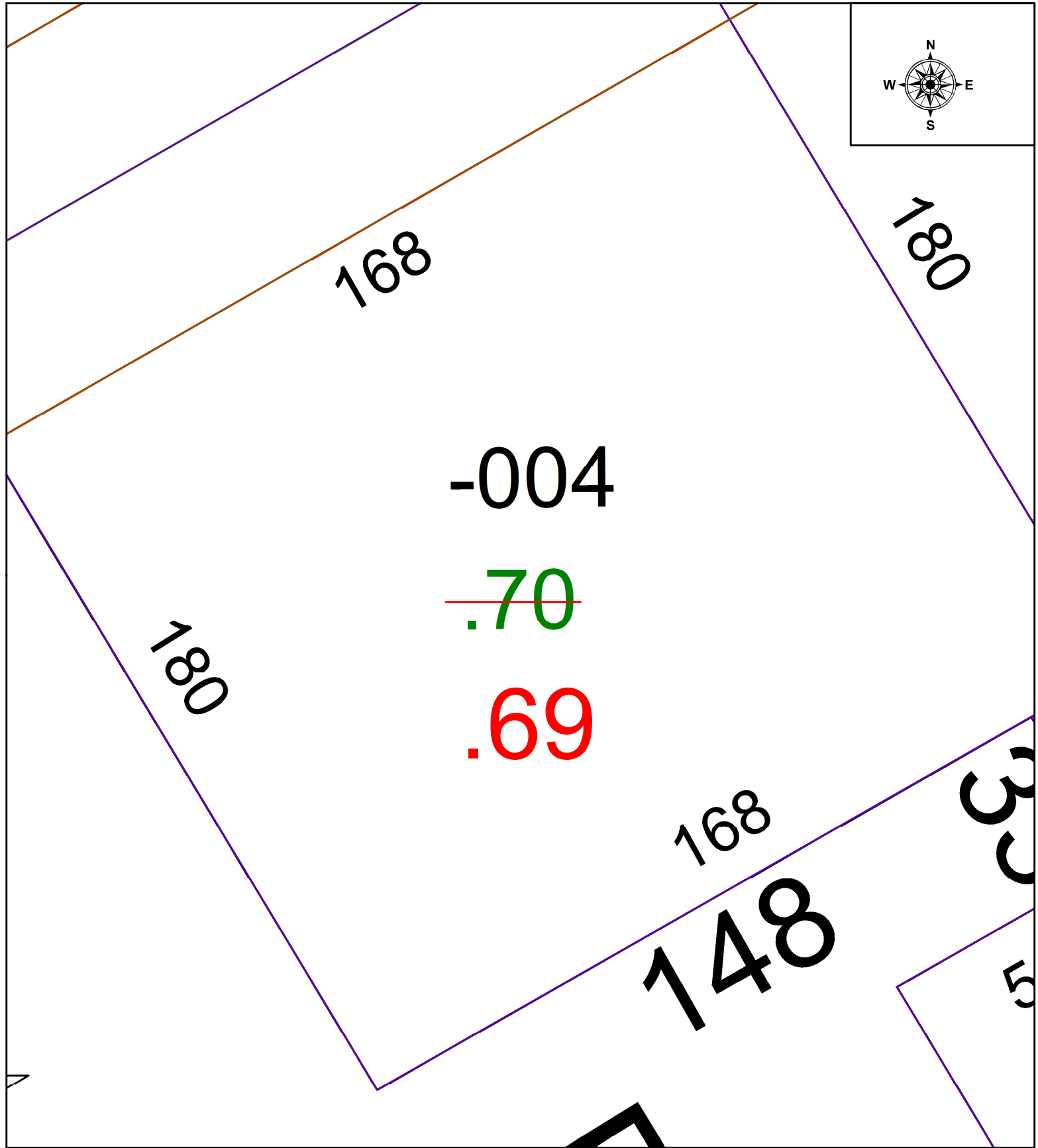
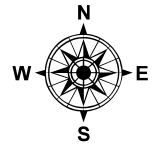


PARENT PARCEL: 01-00-045-000-004

CHILD PARCEL: ACREAGE CORRECTION PER ARNOLD KOEPP

STARTING POINT: RAILROAD SPIKE AT EAST LINE OF AUFDENKAMPE DV 410/369 AND C/L OF N. RIDGE RD

21-04664-A



SPLITS/DEEDS PROCESSED
LORAIN COUNTY TAX MAP DEPARTMENT
226 MIDDLE AVE. ELYRIA, OH

SURVEYED BY: ARNOLD F. KOEPP

CLOSURE: N/A

MAP PAGE(S): 01-00-045

APPROVED BY: WRZ DATE: 9/20/2021

SCALE: 1" = 25' PRIOR INSTRUMENT: 2004-0010653