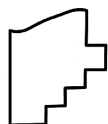
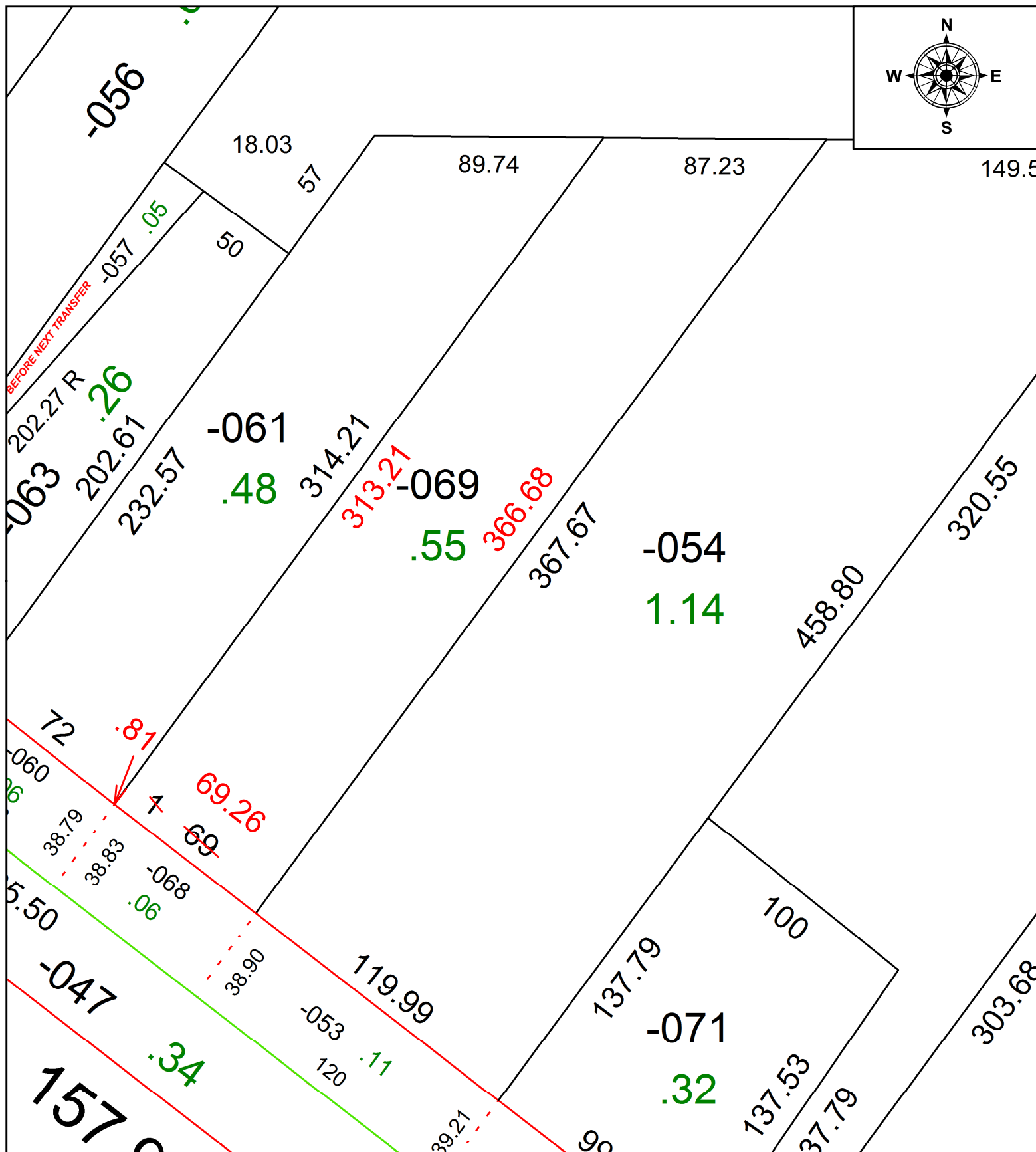
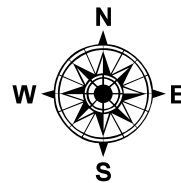


PARENT PARCEL: 06-23-009-102-069

CHILD PARCEL: **MAP CORRECTION ONLY**

STARTING POINT: C/L OF LAKE AVE AND SCHADEN RD

21-04657-C



SPLITS/DEEDS PROCESSED
 LORAIN COUNTY TAX MAP DEPARTMENT
 226 MIDDLE AVE. ELYRIA, OH

SURVEYED BY: WILFREDO BARBOSA
 CLOSURE: 1: 119260
 MAP PAGE(S): 06-25
 APPROVED BY: AC DATE: 9/13/2021
 SCALE: 1" = 50 PRIOR INSTRUMENT: 2012- 0425764