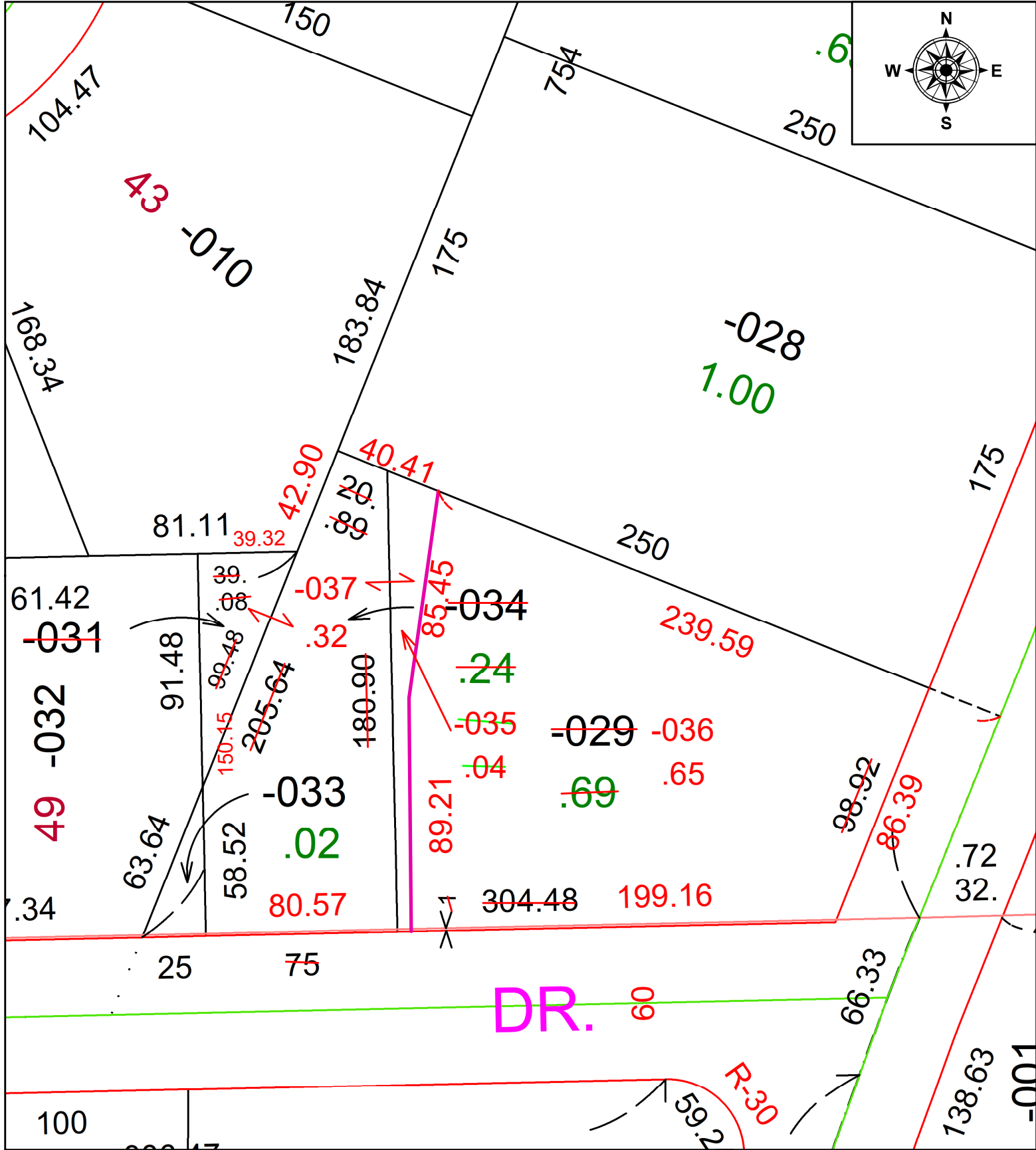


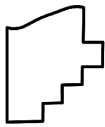
PARENT PARCEL: 06-23-025-104-029, -031, -034

CHILD PARCEL: 06-23-025-104-035, -036, & -037

STARTING POINT: FRONT & DEPTH TO AC CORR PER SURV BY THOMAS A. SIMON

23-04655



 **SPLITS/DEEDS PROCESSED**
 LORAIN COUNTY TAX MAP DEPARTMENT
 226 MIDDLE AVE. ELYRIA, OH

SURVEYED BY: THOMAS A. SIMON SURV # 50838
 CLOSURE: 1: 47061
 MAP PAGE(S): 06-50
 APPROVED BY: AC DATE: March 14, 2023
 SCALE: 1 in = 50 ft PRIOR INSTRUMENT: 2013- 0489673