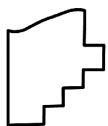
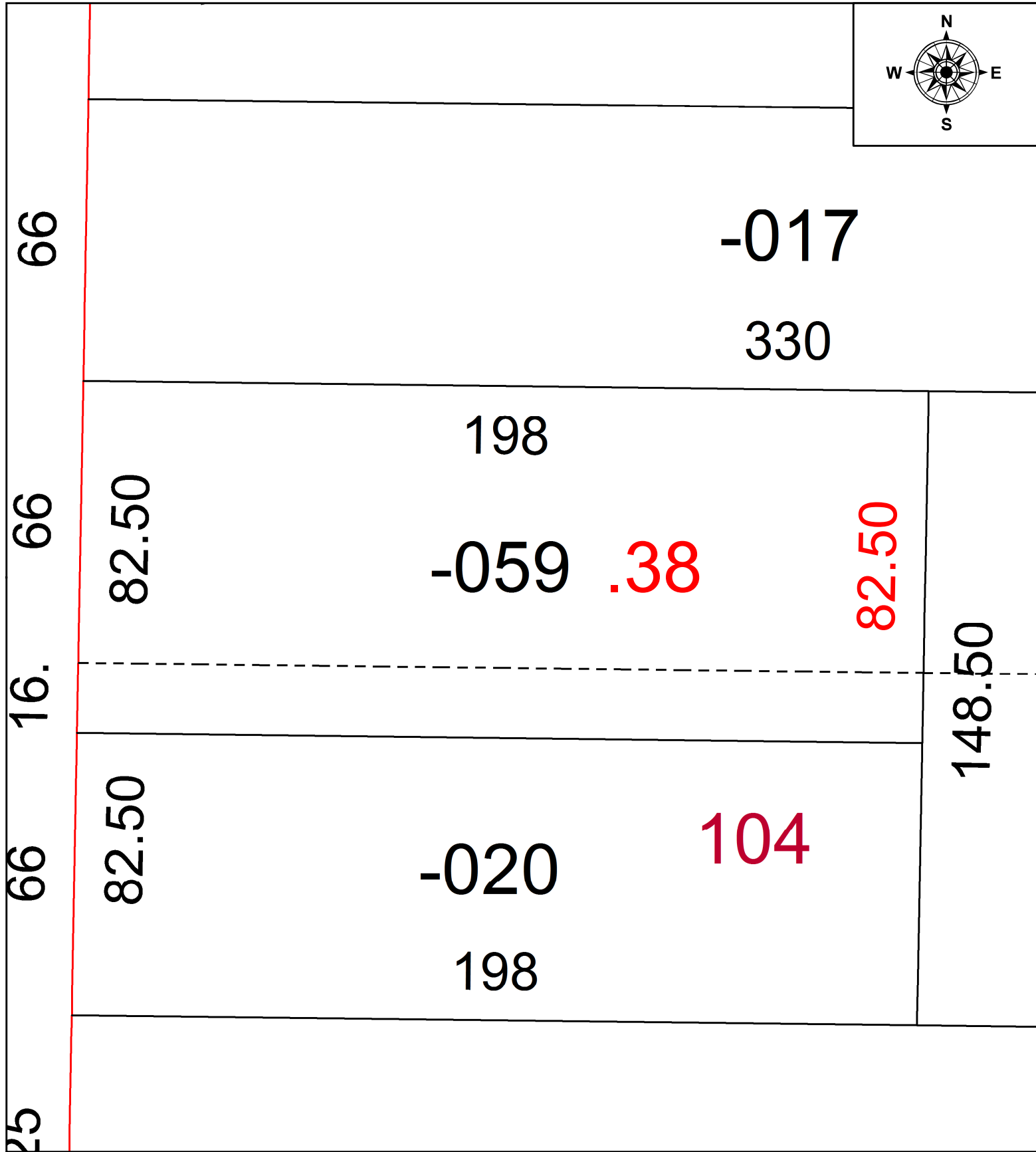


PARENT PARCEL: 09-00-076-101-059

CHILD PARCEL:

STARTING POINT: FRONTAGE & DEPTH TO ACREAGE CORR PER SURV BY JAMES RESAR

21-04652-A



SPLITS/DEEDS PROCESSED
 LORAIN COUNTY TAX MAP DEPARTMENT
 226 MIDDLE AVE. ELYRIA, OH

SURVEYED BY: JAMES RESAR
 CLOSURE: 1: 2147483648
 MAP PAGE(S): 09-00-076
 APPROVED BY: AC DATE: 9/3/2021
 SCALE: 1" = 30 PRIOR INSTRUMENT: 2018- 0673322