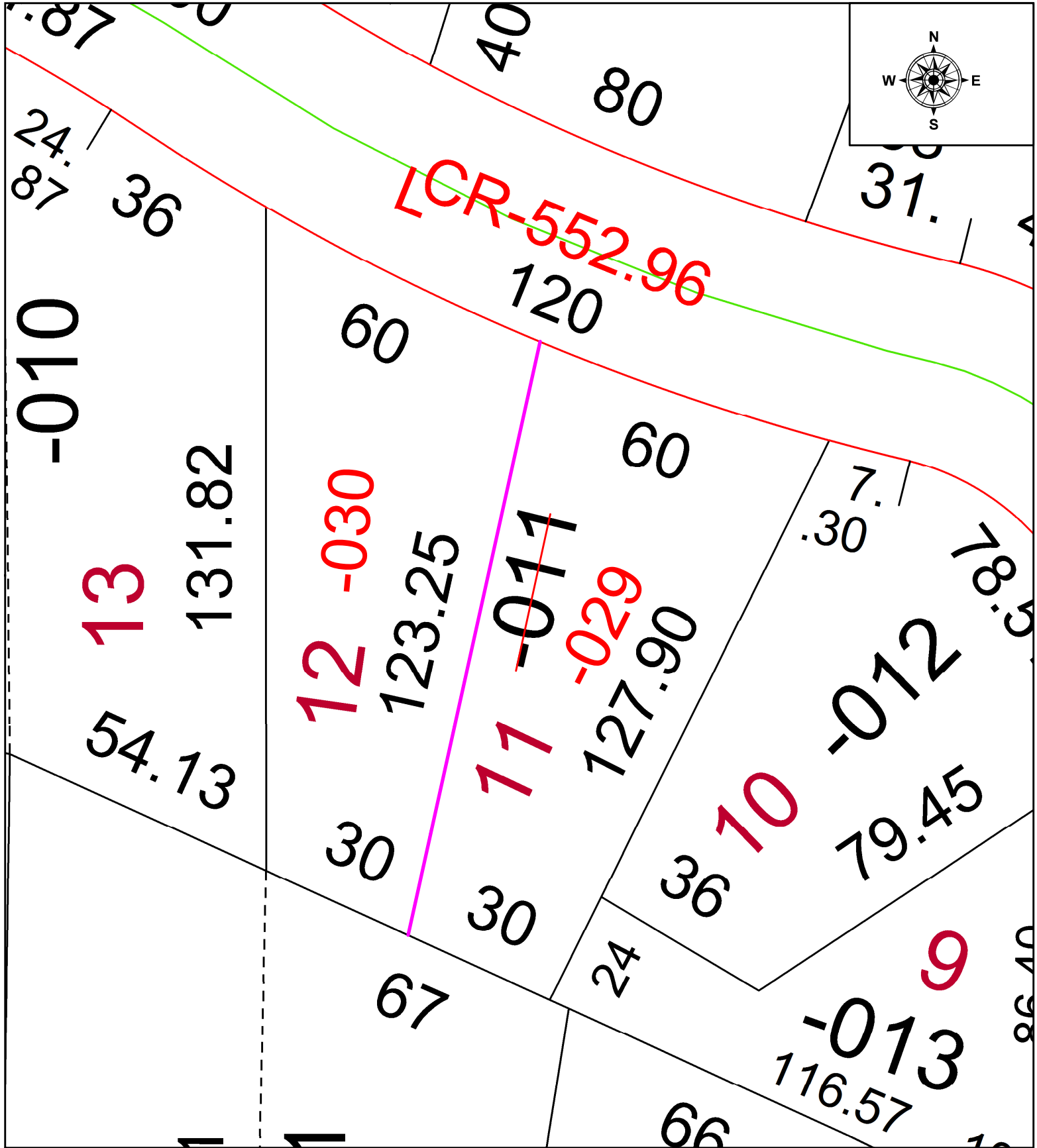


PARENT PARCEL: 04-00-019-102-011

CHILD PARCEL: 04-00-019-102-029 & -030

STARTING POINT: UNCOMBINATION PER PRIOR DEED IN INSTR. # 2012-0437191

21-04651-U



SPLITS/DEEDS PROCESSED
 LORAIN COUNTY TAX MAP DEPARTMENT
 226 MIDDLE AVE. ELYRIA, OH

SURVEYED BY: _____ N/A
 CLOSURE: _____ N/A
 MAP PAGE(S): 04-00-019
 APPROVED BY: _____ WRZ DATE: 9/2/2021
 SCALE: 1" = 25' PRIOR INSTRUMENT: 2012-0437191