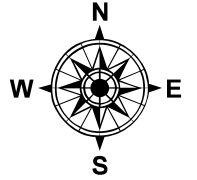
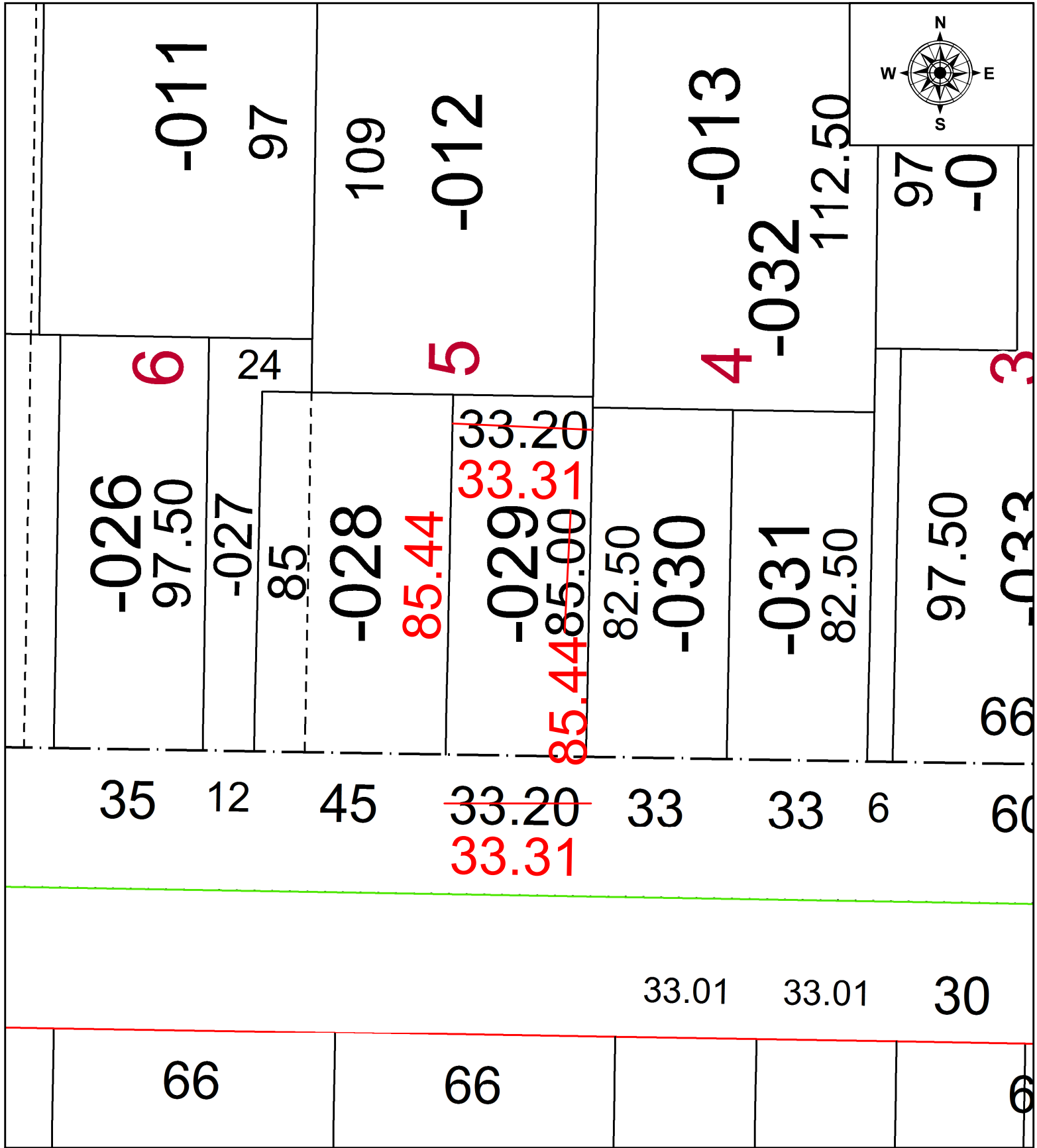


PARENT PARCEL: 06-26-026-000-029

CHILD PARCEL:

STARTING POINT: SE CORNER OF SUBLOT 2

21-04642-C



**SPLITS/DEEDS PROCESSED**  
 LORAIN COUNTY TAX MAP DEPARTMENT  
 226 MIDDLE AVE. ELYRIA, OH

SURVEYED BY: SEAN A. BOLAND  
 CLOSURE: 1: 2147483648  
 MAP PAGE(S): 06-26-026  
 APPROVED BY: AC DATE: 8/31/2021  
 SCALE: 1" = 30 PRIOR INSTRUMENT: 2021- 0822291