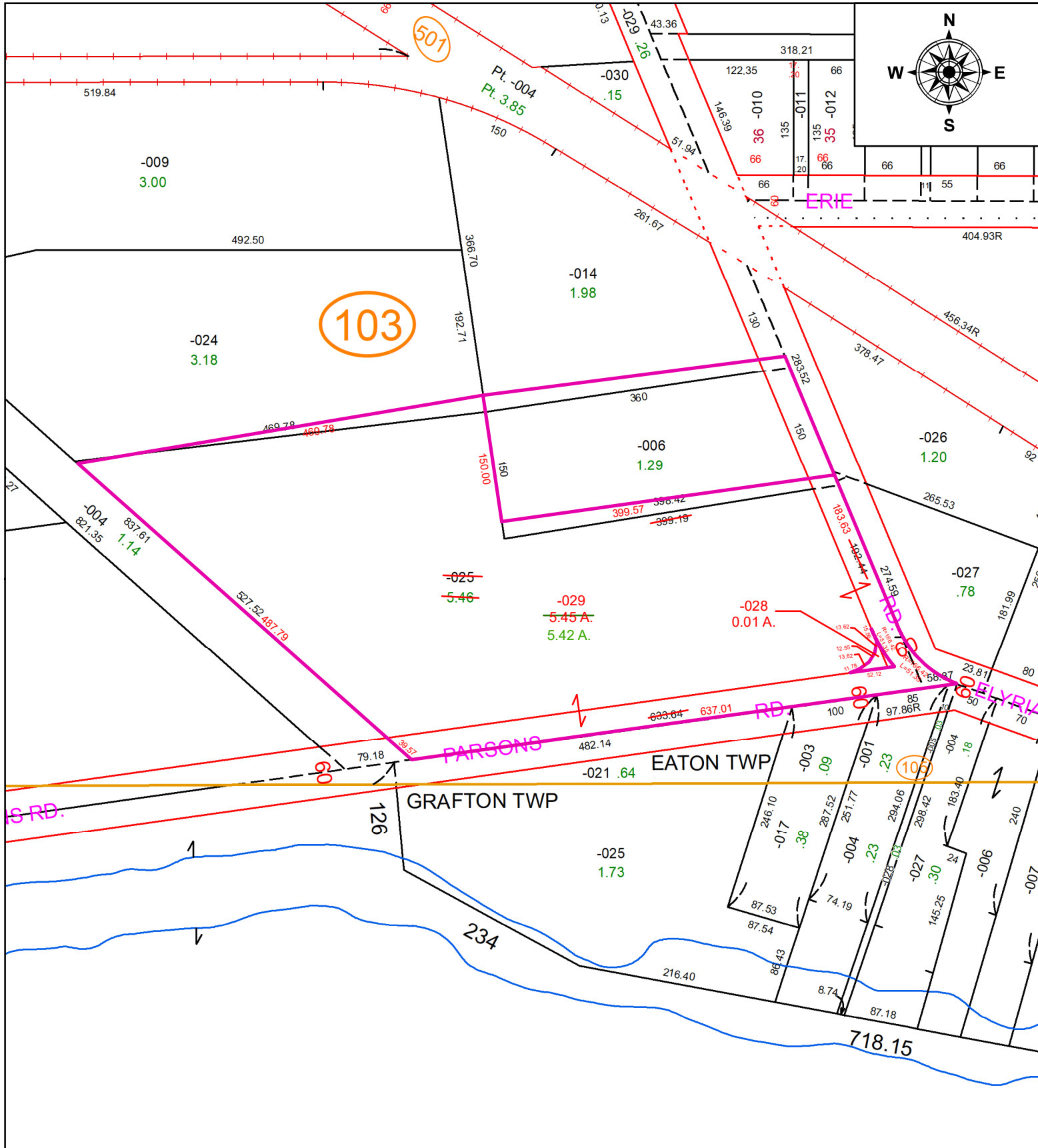


PARENT PARCEL: 11-00-100-103-025

CHILD PARCEL: 11-00-100-103-028 & -029

STARTING POINT: MAG NAIL SET, CL OF N. MAIND ST. (S.R. 57) & CL OF ERIE ST.

23-04640



SPLITS/DEEDS PROCESSED
 LORAIN COUNTY TAX MAP DEPARTMENT
 226 MIDDLE AVE. ELYRIA, OH

SURVEYED BY: KEVIN CANAVAN
 CLOSURE: 1: INF
 MAP PAGE(S): 11-00-100
 APPROVED BY: TJS DATE: 2/24/2023
 SCALE: 1" = 150' PRIOR INSTRUMENT: 2012-0419631