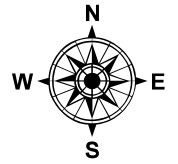
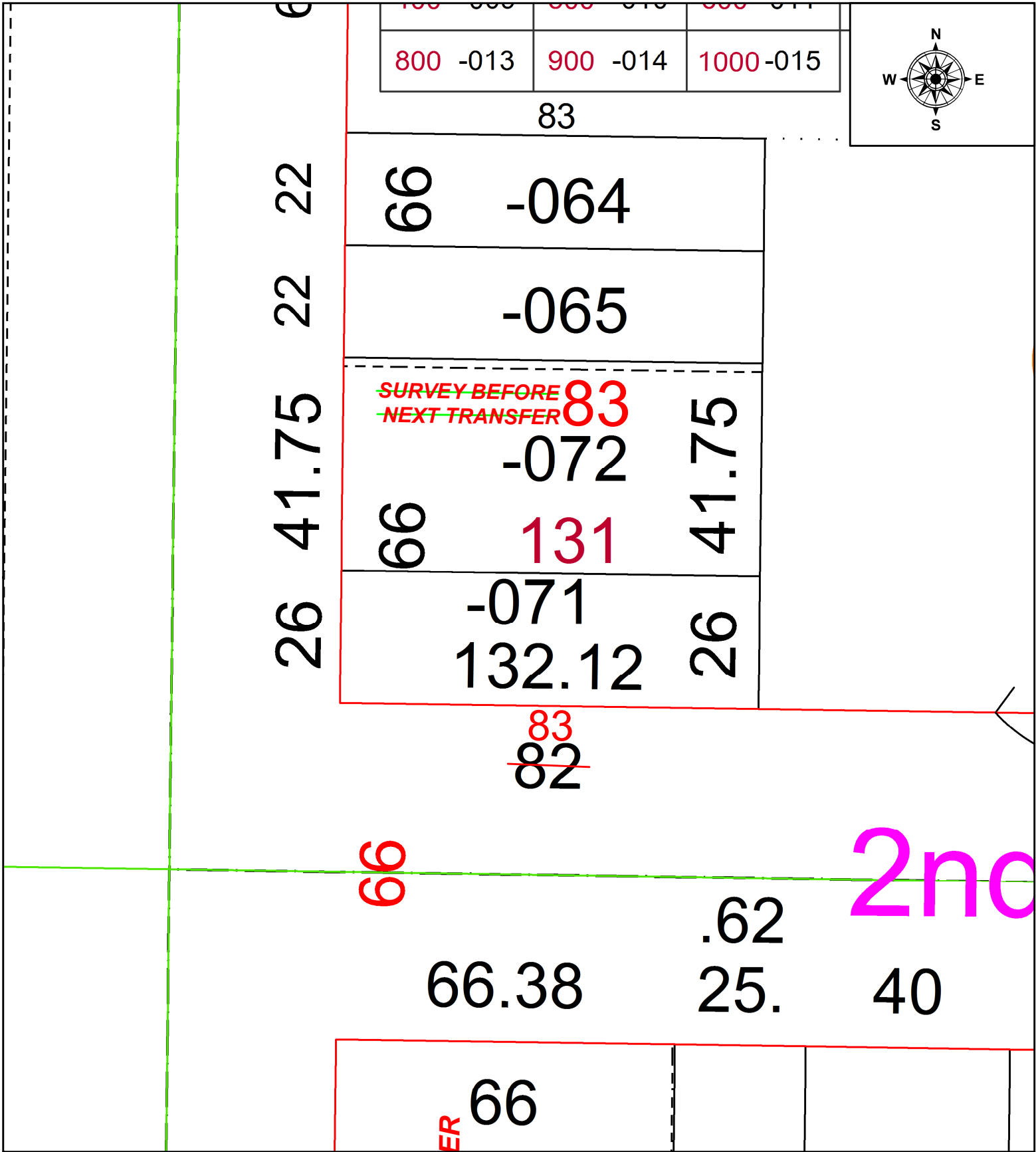


PARENT PARCEL: 06-26-063-000-071 & -072

CHILD PARCEL: N/A

STARTING POINT: INTERSECTION OF EAST LINE OF MIDDLE AVE & NORTH LINE OF SECOND ST

21-04639-C



SPLITS/DEEDS PROCESSED
 LORAIN COUNTY TAX MAP DEPARTMENT
 226 MIDDLE AVE. ELYRIA, OH

SURVEYED BY: AMY KELLY
 CLOSURE: 1: -2147483648
 MAP PAGE(S): 06-26-063
 APPROVED BY: WRZ DATE: 8/31/2021
 SCALE: 1" = 25' PRIOR INSTRUMENT: 2016-0599011