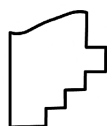
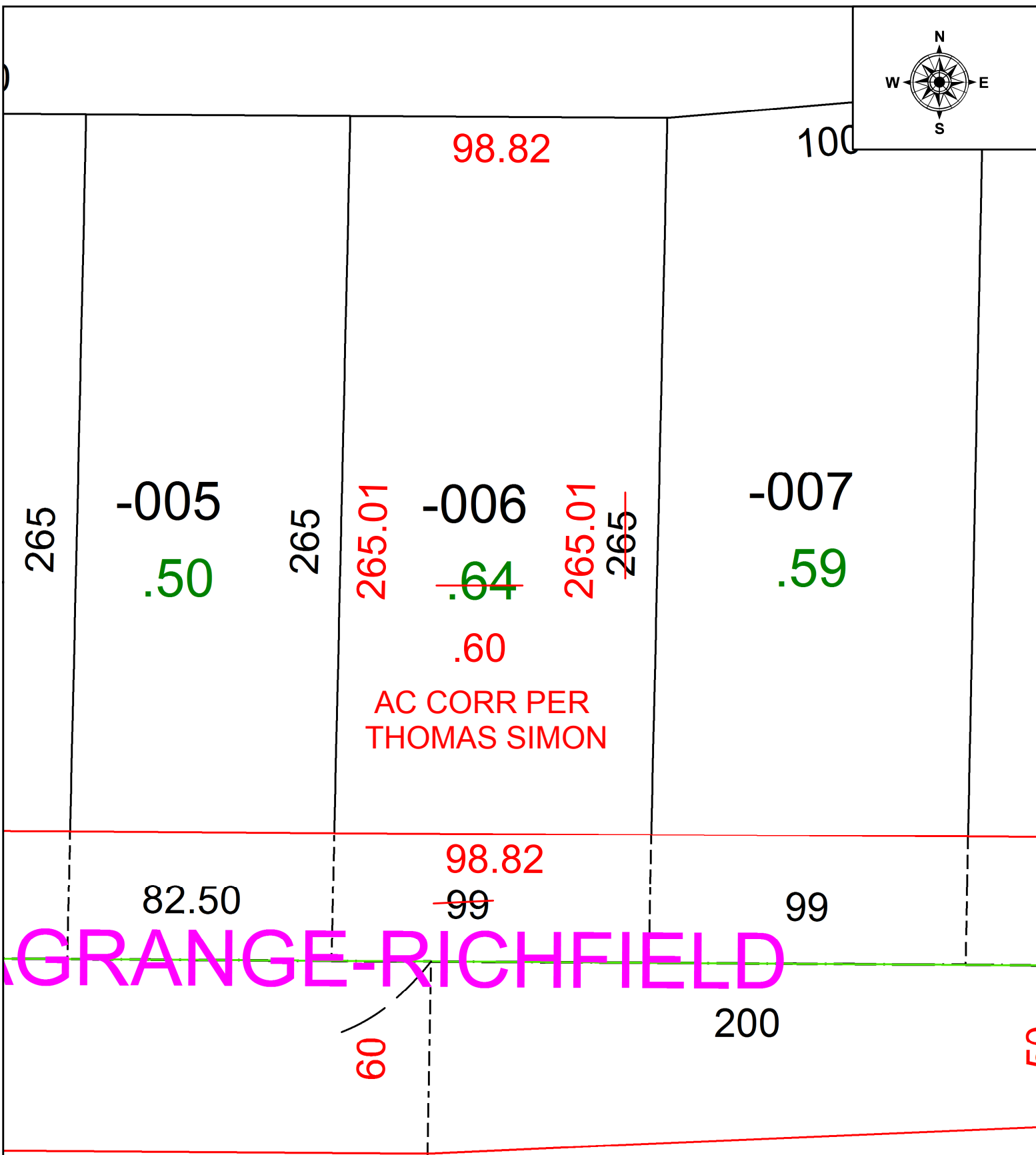
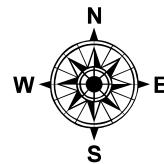


PARENT PARCEL: 16-00-046-000-006

CHILD PARCEL: N/A

STARTING POINT: INTERSECTION OF C/LS OF ST RT 83 AND ST RT 303

21-04638-A



**SPLITS/DEEDS PROCESSED**  
 LORAIN COUNTY TAX MAP DEPARTMENT  
 226 MIDDLE AVE. ELYRIA, OH

SURVEYED BY: THOMAS SIMON

CLOSURE: 1: 86,954

MAP PAGE(S): 16-00-046

APPROVED BY: WRZ DATE: 8/31/2021

SCALE: 1" = 40 PRIOR INSTRUMENT: 2021-0827754