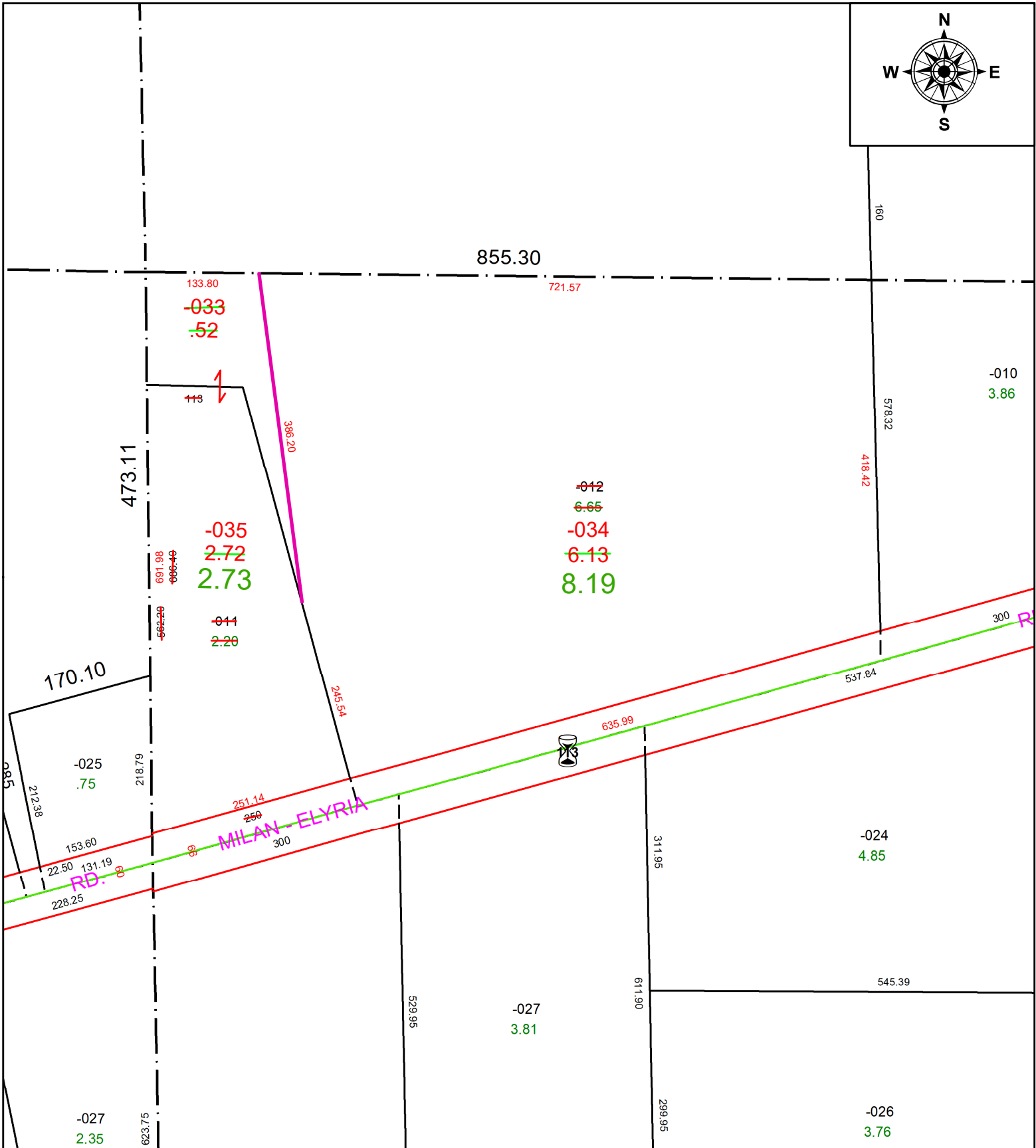
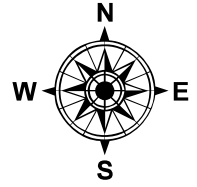


PARENT PARCEL: 08-00-099-000-011 & -012

CHILD PARCEL: 08-00-099-000-033, -034, & -035

STARTING POINT: NW CORNER OF O/L 99 **AC CORR PER SURV BY TIMOTHY D. HOZALSKI**

23-04634



**SPLITS/DEEDS PROCESSED**  
 LORAIN COUNTY TAX MAP DEPARTMENT  
 226 MIDDLE AVE. ELYRIA, OH

SURVEYED BY: TIMOTHY D. HOZALSKI SURV # 50814

CLOSURE: 1: 299019

MAP PAGE(S): 08-00-099-A

APPROVED BY: AC DATE: February 21, 2023

SCALE: 1 in = 150 ft PRIOR INSTRUMENT: 2009- 0308245