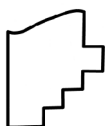
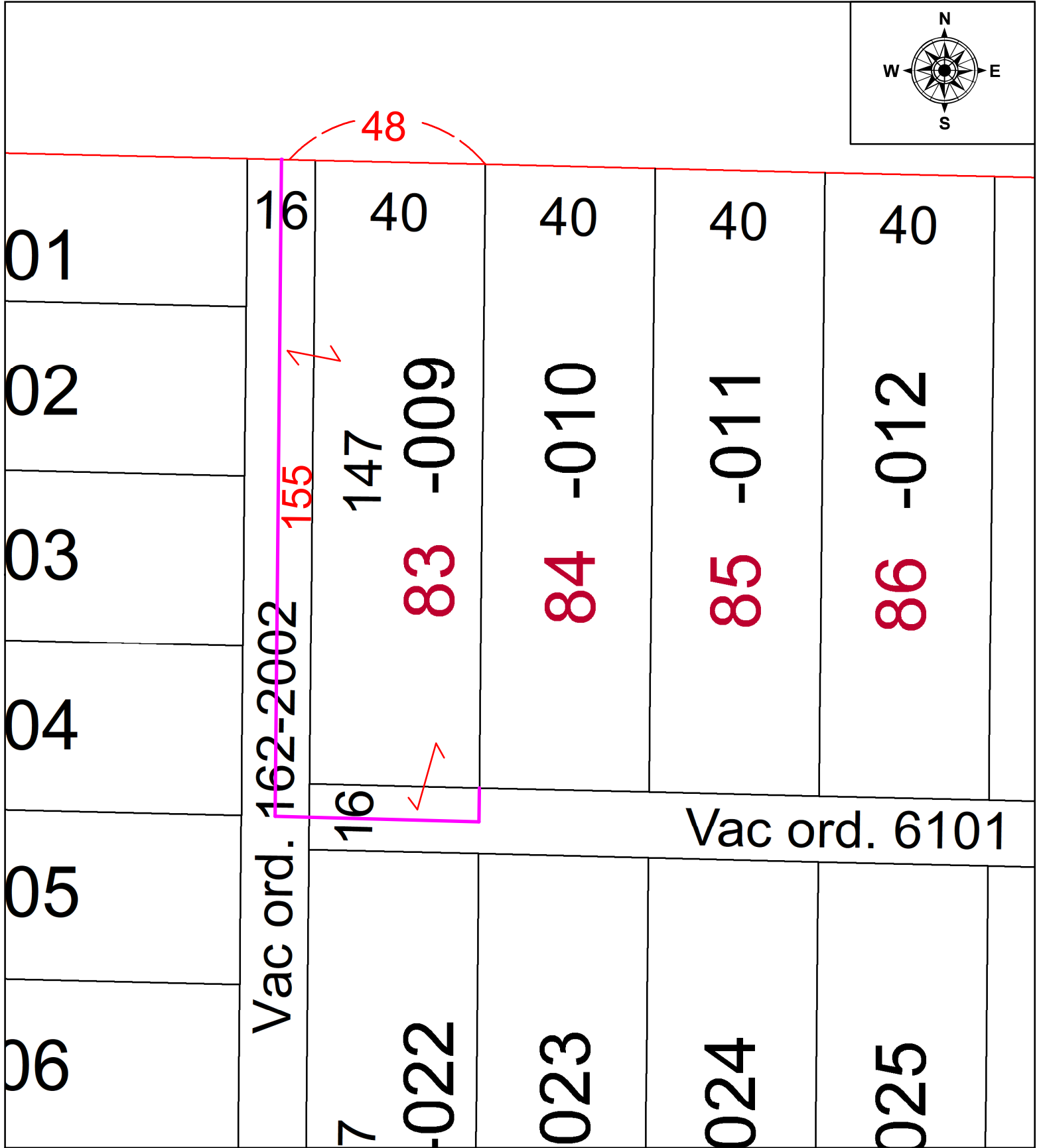
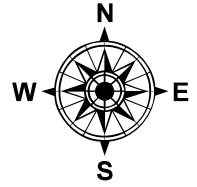


PARENT PARCEL: 02-01-006-134-009 FROM 40 X 155 TO 48 X 155

CHILD PARCEL: FRONTAGE & DEPTH CORR. PER INST. # 2021-084171 & ORD. # 162-2002 & ORD. # 6101

STARTING POINT: NA

21-04629-C



**SPLITS/DEEDS PROCESSED**  
 LORAIN COUNTY TAX MAP DEPARTMENT  
 226 MIDDLE AVE. ELYRIA, OH

SURVEYED BY: NA  
 CLOSURE: NA  
 MAP PAGE(S): 02-01-006  
 APPROVED BY: TJS DATE: 3/22/2022  
 SCALE: 1" = 30' PRIOR INSTRUMENT: 2020-0755315