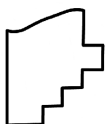
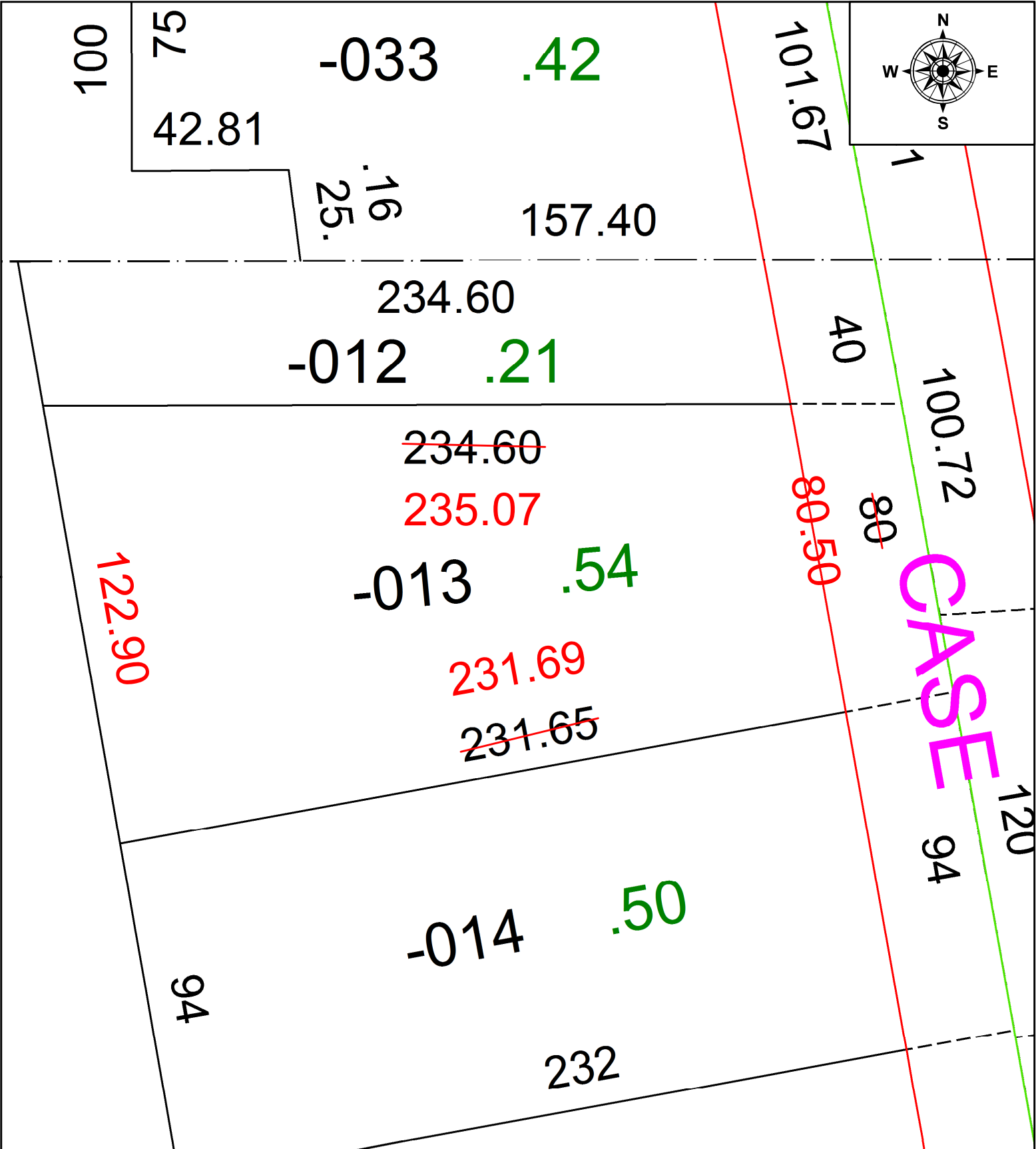


PARENT PARCEL: 07-00-046-106-013

CHILD PARCEL: **MAP CORRECTION ONLY**

21-04627-C

STARTING POINT: NORTH LINE OF OL 46 AND C/L OF CASE RD



**SPLITS/DEEDS PROCESSED**  
 LORAIN COUNTY TAX MAP DEPARTMENT  
 226 MIDDLE AVE. ELYRIA, OH

SURVEYED BY: THOMAS A. SIMON  
 CLOSURE: 1: 312237  
 MAP PAGE(S): 07-00-046-B  
 APPROVED BY: AC DATE: 8/16/2021  
 SCALE: 1" = 30 PRIOR INSTRUMENT: 2021- 0819786