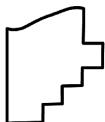
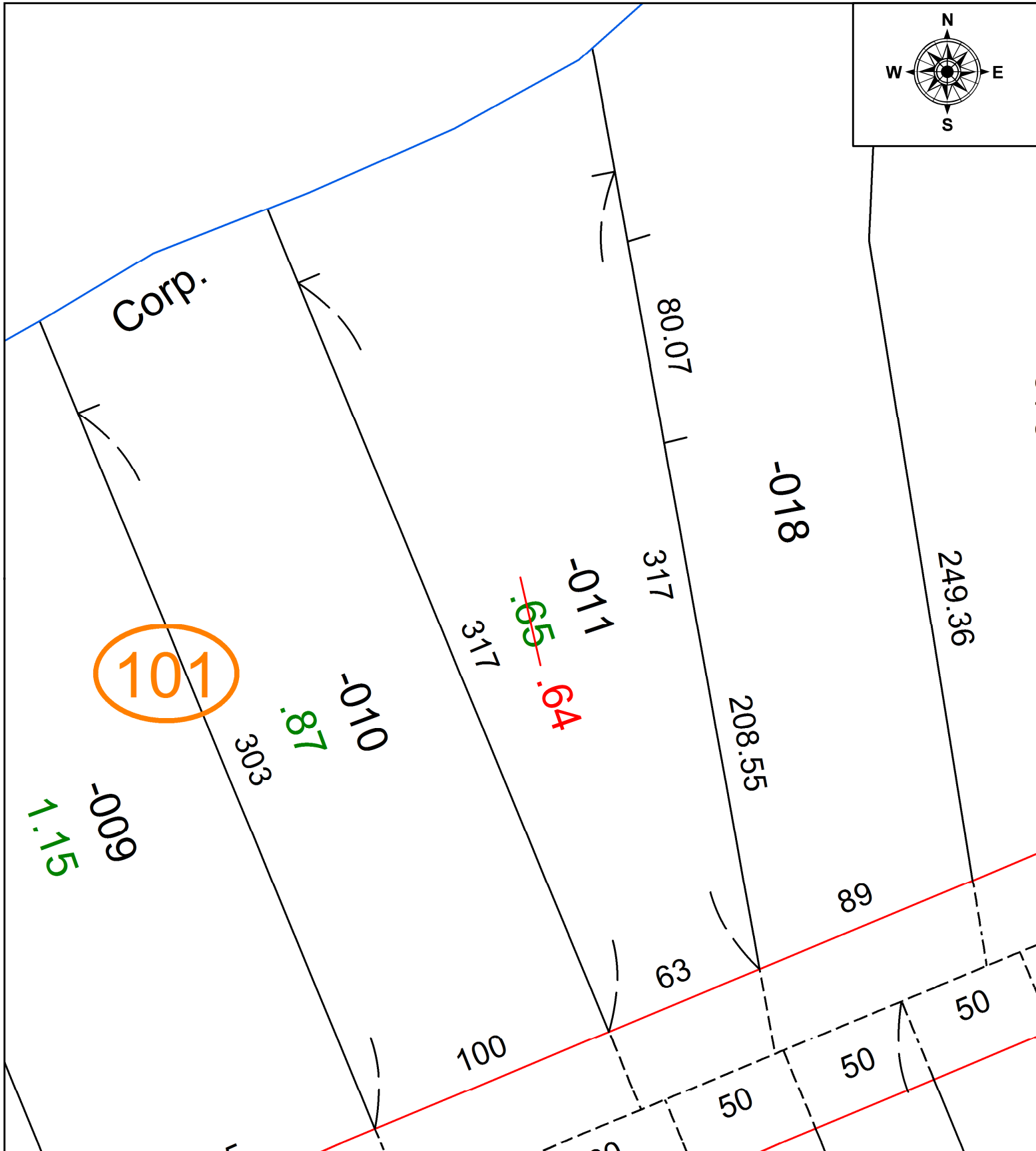
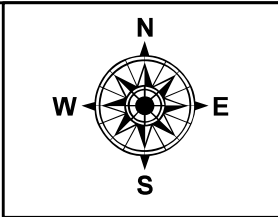


PARENT PARCEL: 03-00-046-101-011

CHILD PARCEL: **AC. CORR. PER PRIOR INSTRUMENT # 2021-0798665**

STARTING POINT: C/L EAST ERIE AVE & S.E. CORNER J.W.MYERS

21-04625-A



SPLITS/DEEDS PROCESSED
LORAIN COUNTY TAX MAP DEPARTMENT
226 MIDDLE AVE. ELYRIA, OH

SURVEYED BY: XXXXXXXXXXXXXXXX
CLOSURE: XXXXXXXX
MAP PAGE(S): 03-00-046
APPROVED BY: DMA DATE: 8/11/2021
SCALE: 1" = 50' PRIOR INSTRUMENT: 20210798665