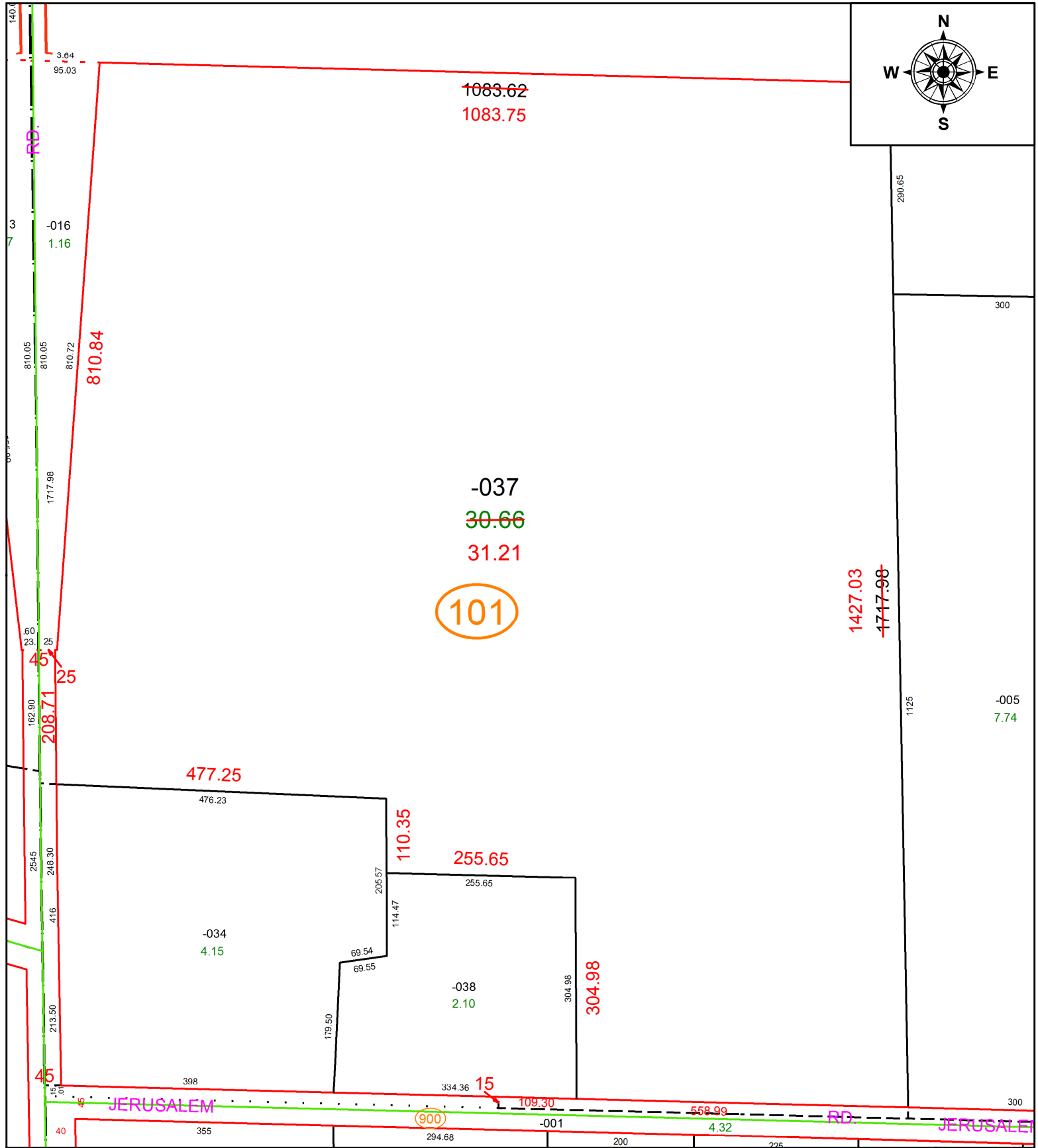


PARENT PARCEL: 01-00-028-101-037

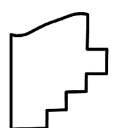
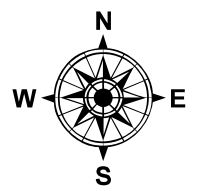
CHILD PARCEL: **AC CORR PER SURV BY THOMAS SIMON**

STARTING POINT: C/L OF SUNNYSIDE AND JERUSALEM ROAD

21-04620-D



101



SPLITS/DEEDS PROCESSED
 LORAIN COUNTY TAX MAP DEPARTMENT
 226 MIDDLE AVE. ELYRIA, OH

SURVEYED BY: THOMAS A. SIMON
 CLOSURE: 1: 950028
 MAP PAGE(S): 01-00-028-A
 APPROVED BY: AC DATE: 8/6/2021
 SCALE: 1" = 100 PRIOR INSTRUMENT: 2020- 0794532