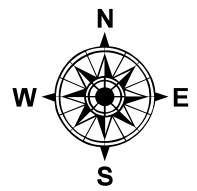
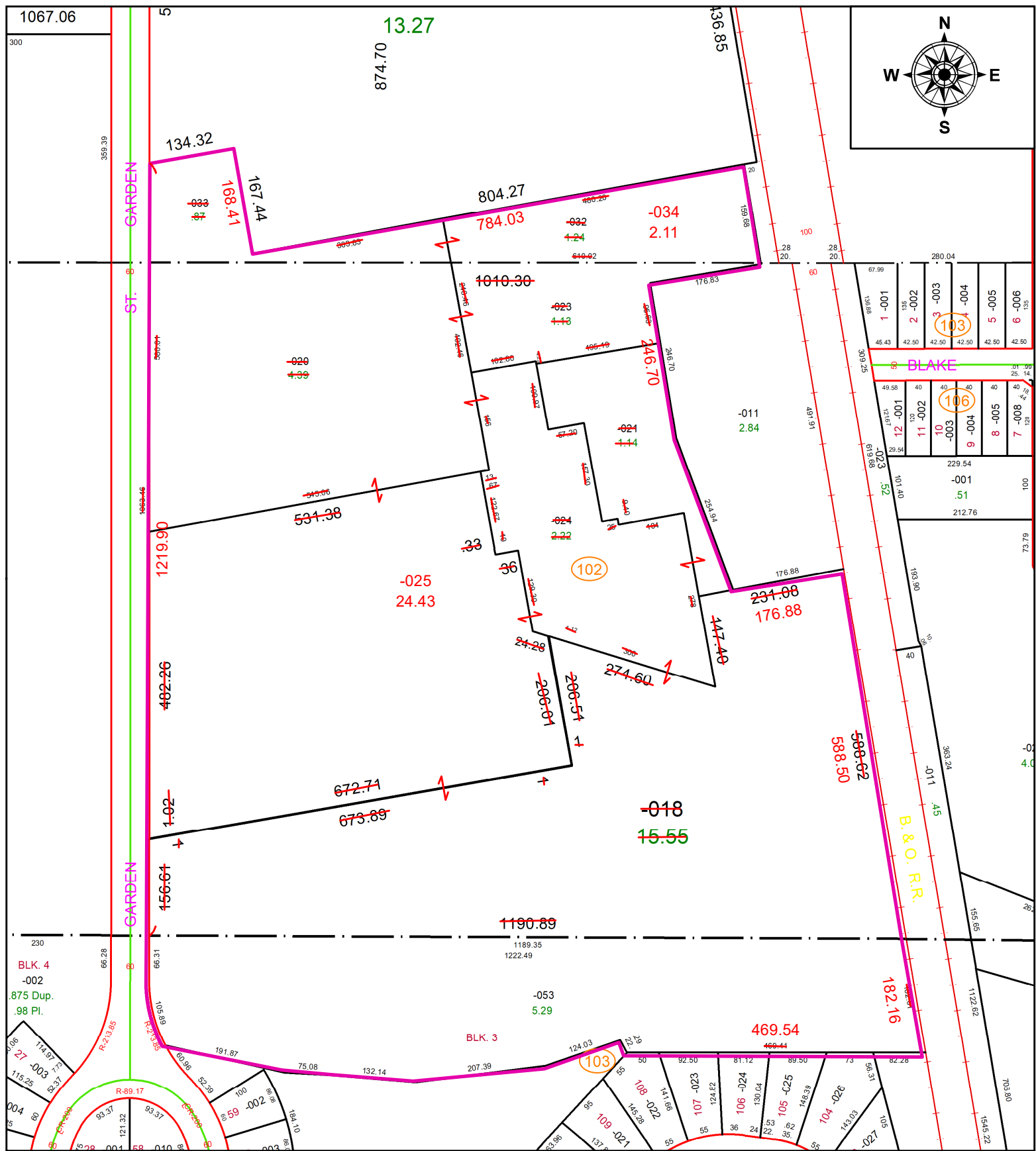


PARENT PARCEL: 06-24-009-102-018, -020, -021, -023, -024, 009-102-020, -023, -008-103-053

CHILD PARCEL: 06-24-009-102-025, 06-24-010-102-034, ST: 06-24-008-103-053

STARTING POINT: S. ROW OF WOODFORD AVE AND E. ROW OF GARDEN ST

23-04618



**SPLITS/DEEDS PROCESSED**

LORAIN COUNTY TAX MAP DEPARTMENT  
226 MIDDLE AVE. ELYRIA, OH

SURVEYED BY: TREVOR A. BIXLER SURV # 50792  
 CLOSURE: 1: 806434  
 MAP PAGE(S): 06-148  
 APPROVED BY: AC DATE: January 25, 2023  
 SCALE: 1 in = 200 ft PRIOR INSTRUMENT: 2007- 0190281