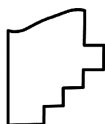
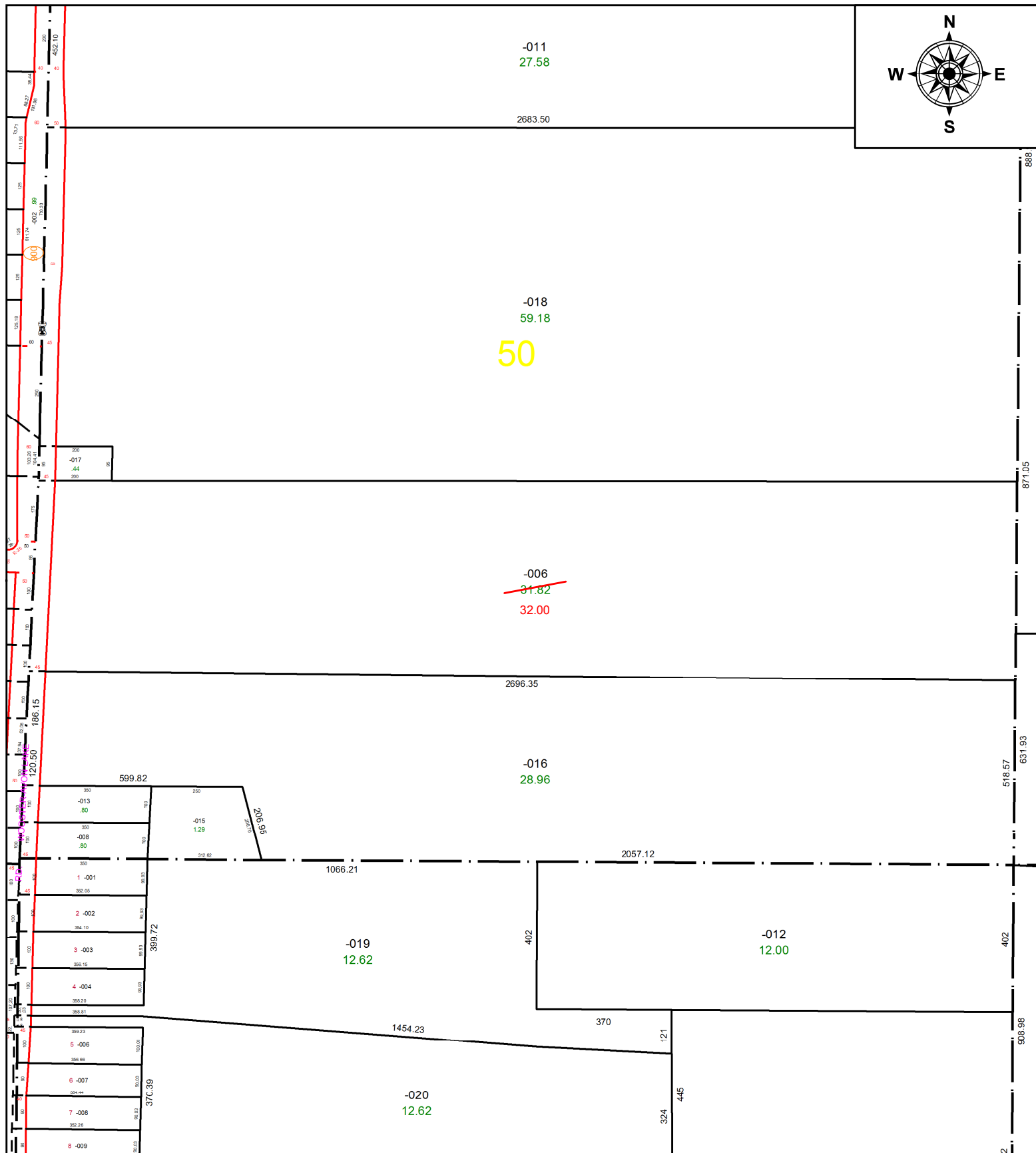
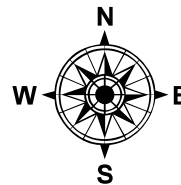


PARENT PARCEL: 11-00-050-000-006

CHILD PARCEL: **Ac. Corr. per prior D.V. 278/130 & 834/567**

STARTING POINT: XXXXXXXXXXXXXXXXXXXX

21-04616-A



**SPLITS/DEEDS PROCESSED**  
LORAIN COUNTY TAX MAP DEPARTMENT  
226 MIDDLE AVE. ELYRIA, OH

SURVEYED BY: XXXXXXXXXXXXXXXX  
CLOSURE: XXXXXX  
MAP PAGE(S): 11-00-050  
APPROVED BY: DMA DATE: 8/4/2021  
SCALE: 1" = 350' PRIOR INSTRUMENT: D.V. 834/567 & 278/130