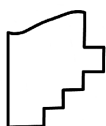
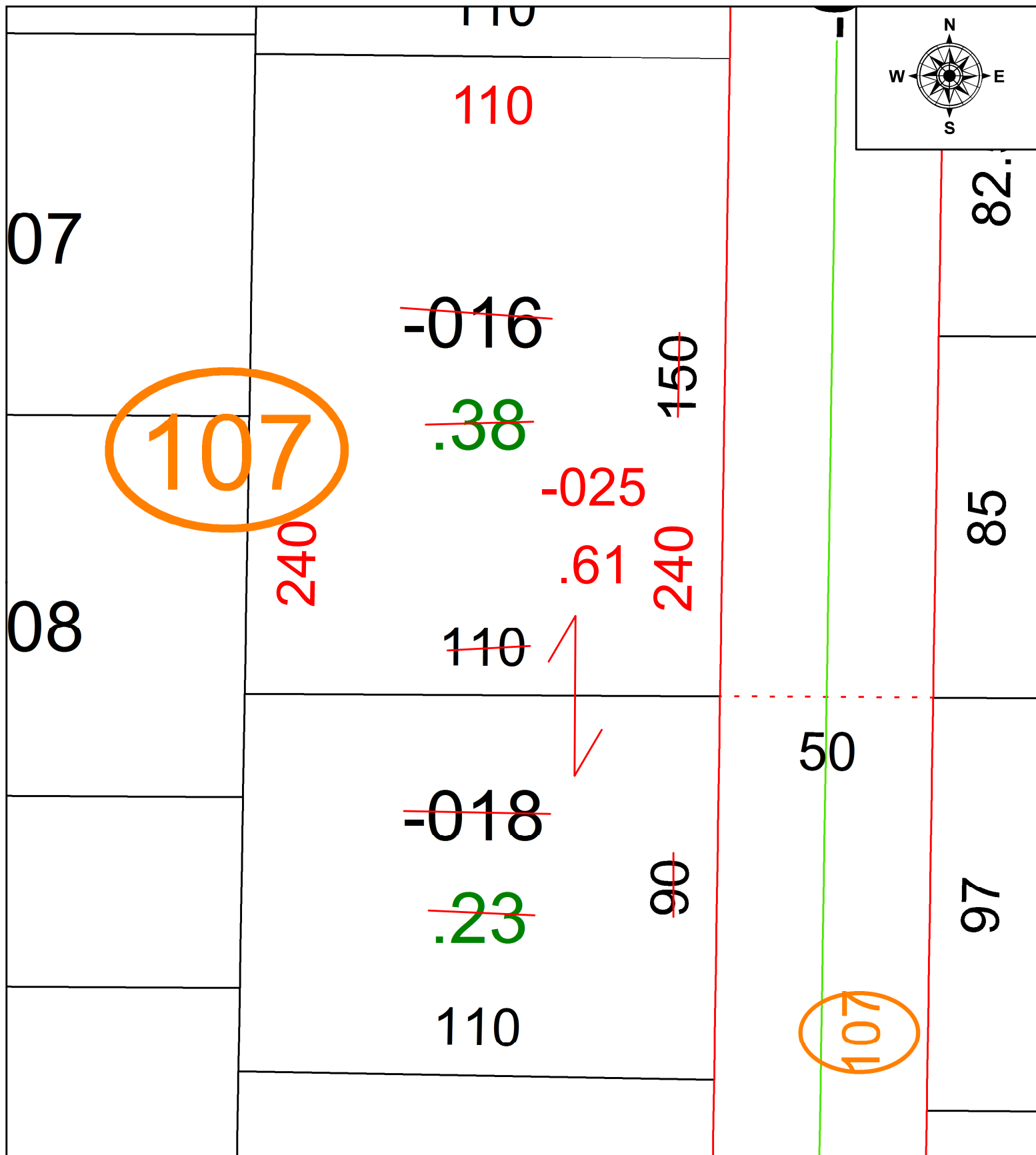


PARENT PARCEL: 05-00-037-107-016, -018

CHILD PARCEL: 05-00-037-107-025

STARTING POINT: COMBINATION OFF PRIOR LEGAL

21-04615-C



**SPLITS/DEEDS PROCESSED**  
 LORAIN COUNTY TAX MAP DEPARTMENT  
 226 MIDDLE AVE. ELYRIA, OH

SURVEYED BY: \_\_\_\_\_ N/A  
 CLOSURE: \_\_\_\_\_ N/A  
 MAP PAGE(S): \_\_\_\_\_ 05-00-037-A  
 APPROVED BY: \_\_\_\_\_ AC DATE: \_\_\_\_\_ 8/3/2021  
 SCALE: \_\_\_\_\_ 1" = 30' PRIOR INSTRUMENT: \_\_\_\_\_ 2012- 0429553