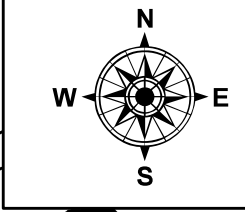
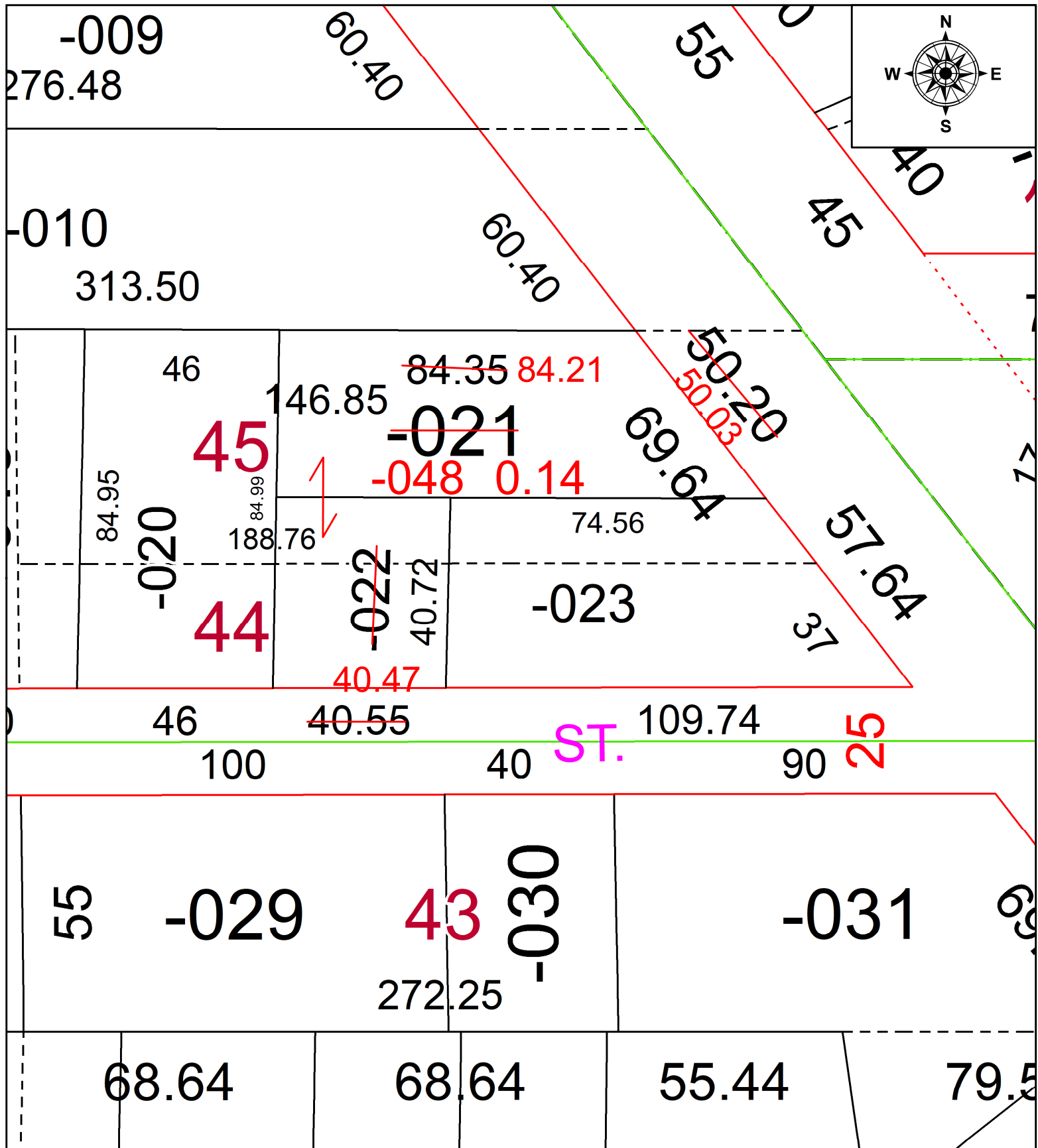


PARENT PARCEL: 06-24-085-104-021 & -022

CHILD PARCEL: 06-24-085-104-048

STARTING POINT: **FRONTAGE & DEPTH TO AC CORR PER SURV BY THOMAS A. SIMON**

23-04613



SPLITS/DEEDS PROCESSED
 LORAIN COUNTY TAX MAP DEPARTMENT
 226 MIDDLE AVE. ELYRIA, OH

SURVEYED BY: THOMAS A. SIMON SURV # 50786
 CLOSURE: 1: 66428
 MAP PAGE(S): 06-24
 APPROVED BY: AC DATE: January 19, 2023
 SCALE: 1 in = 30 ft PRIOR INSTRUMENT: 2017- 0629319