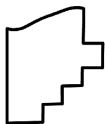
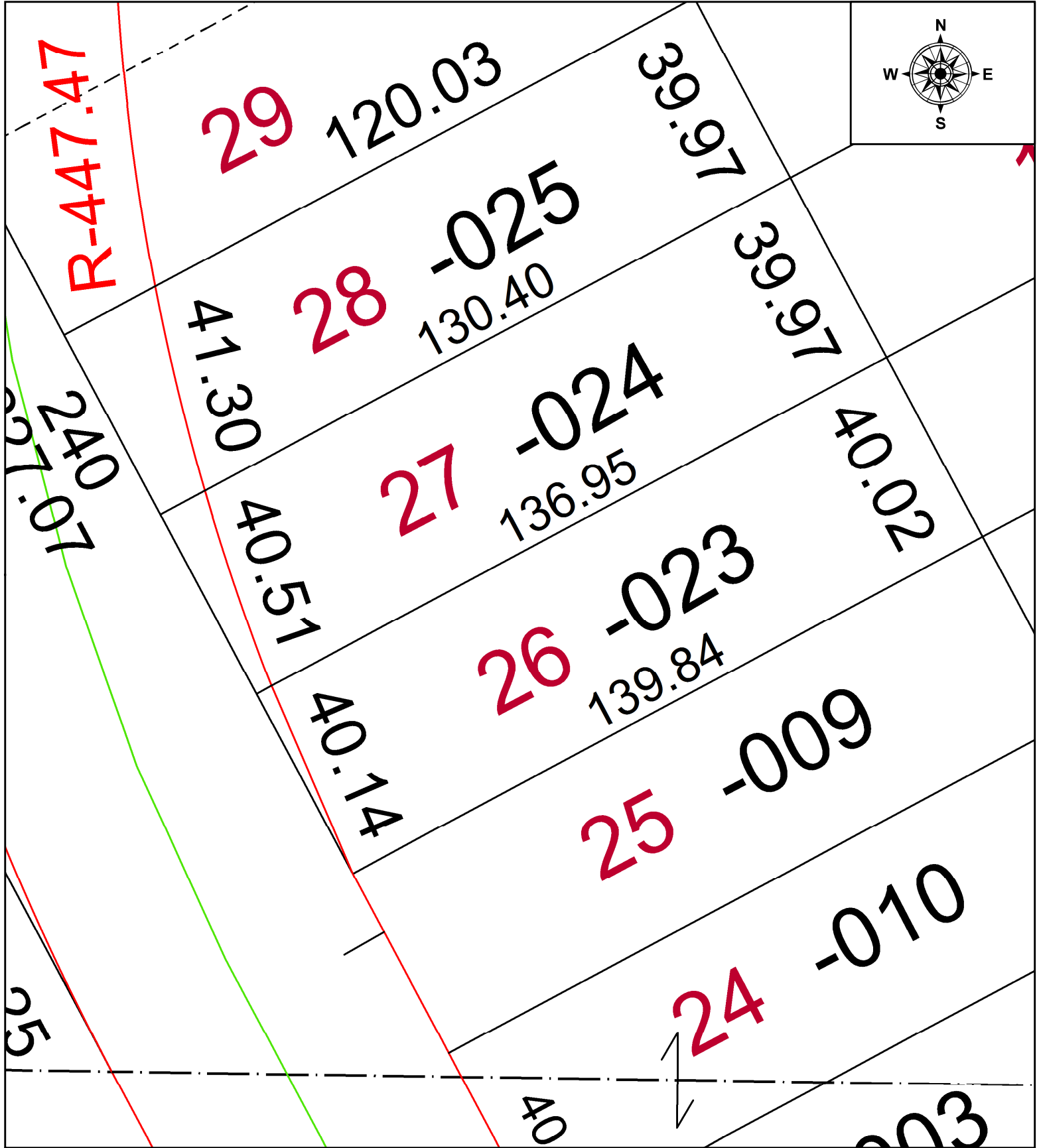


PARENT PARCEL: 06-24-103-000-024

CHILD PARCEL: NO MAP CHANGES

STARTING POINT: INTERSECTION OF C/LS GATEWAY BLVD & HAZEL ST

21-04613-D



SPLITS/DEEDS PROCESSED
 LORAIN COUNTY TAX MAP DEPARTMENT
 226 MIDDLE AVE. ELYRIA, OH

SURVEYED BY: THOMAS SIMON

CLOSURE: 1: 98,060

MAP PAGE(S): 06-24-103

APPROVED BY: WRZ DATE: 8/2/2021

SCALE: 1" = 25' PRIOR INSTRUMENT: 2013-0466837