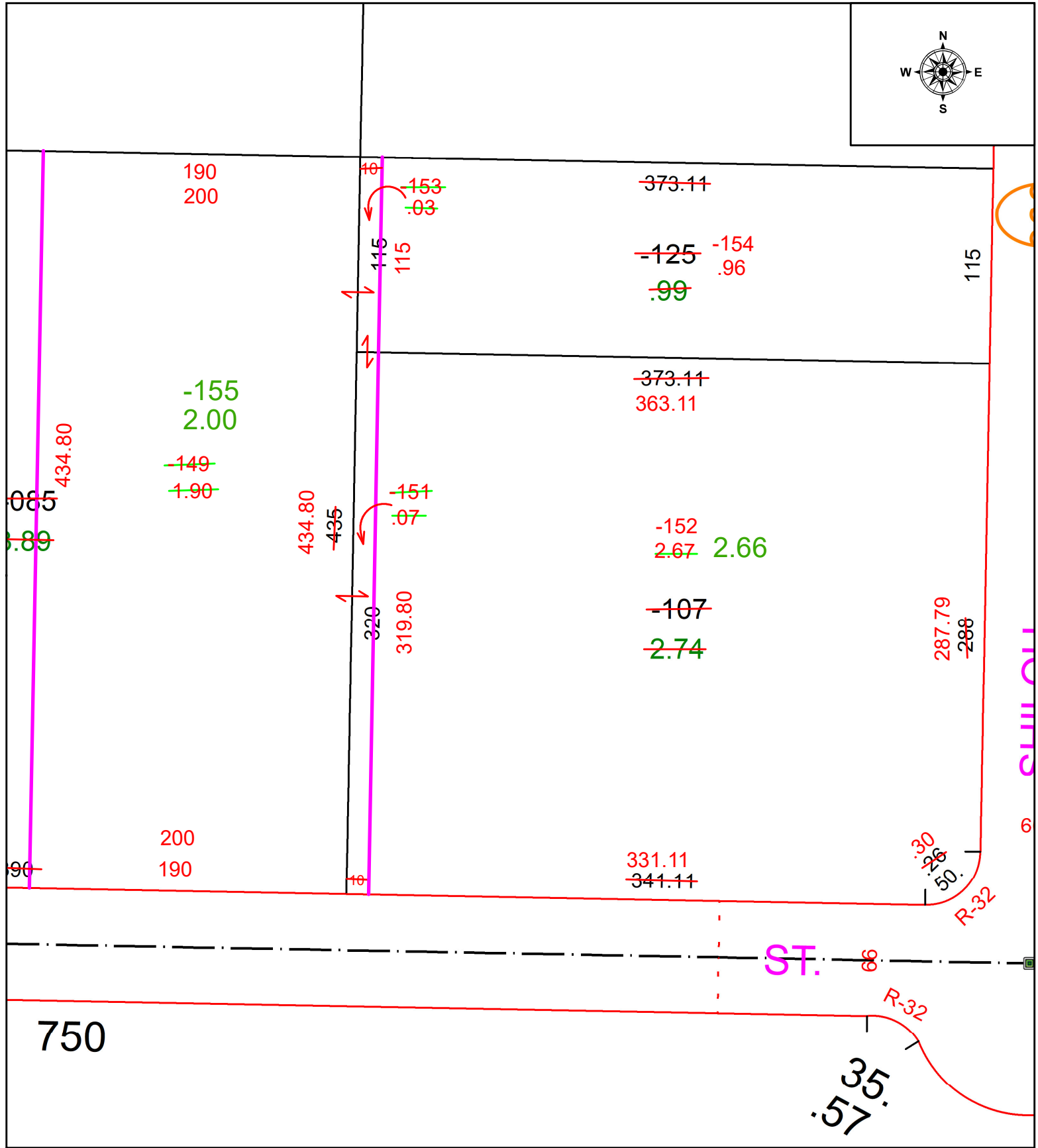
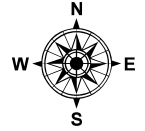


PARENT PARCEL: 18-00-020-000-107, -125, & -150

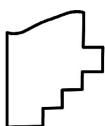
CHILD PARCEL: 18-00-020-000-151 THRU -155 AC CORR PER SURVEYOR THOMAS J. KING JR.

STARTING POINT: 5/8" IRON BAR FOUND @ SOUTH EAST CORNER OF O.L. 20

23-04608



750



SPLITS/DEEDS PROCESSED
LORAIN COUNTY TAX MAP DEPARTMENT
226 MIDDLE AVE. ELYRIA, OH

SURVEYED BY: THOMAS J. KING JR. SURVEY # 50779
CLOSURE: 1: INF
MAP PAGE(S): 18-00-020
APPROVED BY: WRZ DATE: 1/9/2023
SCALE: 1" = 75 PRIOR INSTRUMENT: #1988-0550572