

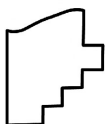
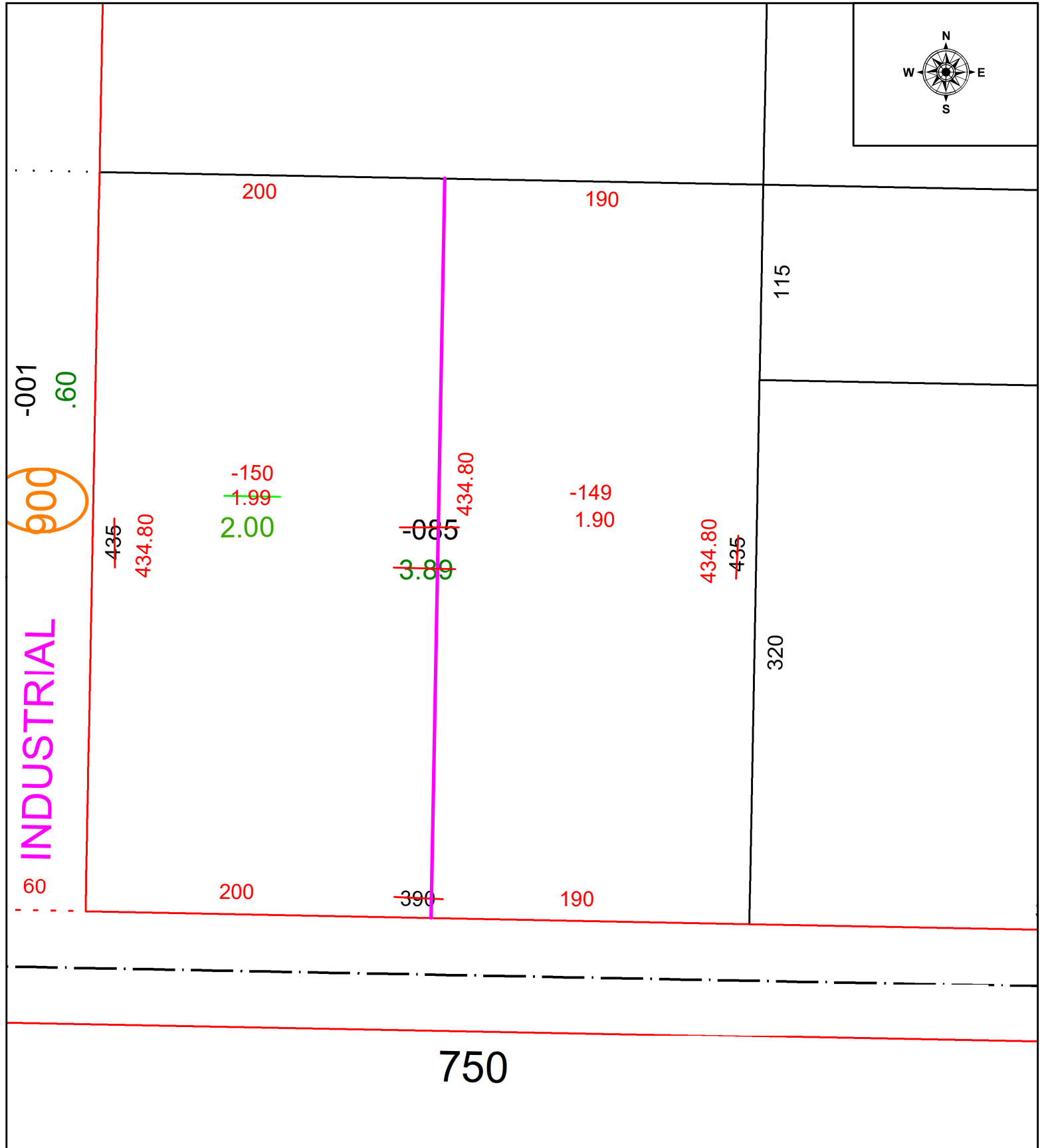
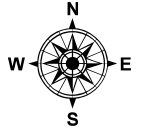
PARENT PARCEL: 18-00-020-000-085

CHILD PARCEL: 18-00-020-000-149 & -150

AC CORR PER SURVEYOR THOMAS J. KING JR.

23-04607

STARTING POINT: 5/8" IRON BAR FOUND @ SOUTH EAST CORNER OF O.L. 20



**SPLITS/DEEDS PROCESSED**  
LORAIN COUNTY TAX MAP DEPARTMENT  
226 MIDDLE AVE. ELYRIA, OH

SURVEYED BY:	THOMAS J. KING JR.	SURVEY #	50778
CLOSURE:	1: INF		
MAP PAGE(S):	18-00-020		
APPROVED BY:	WRZ	DATE:	1/9/2023
SCALE:	1" = 75	PRIOR INSTRUMENT:	#2017-0615938