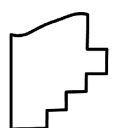
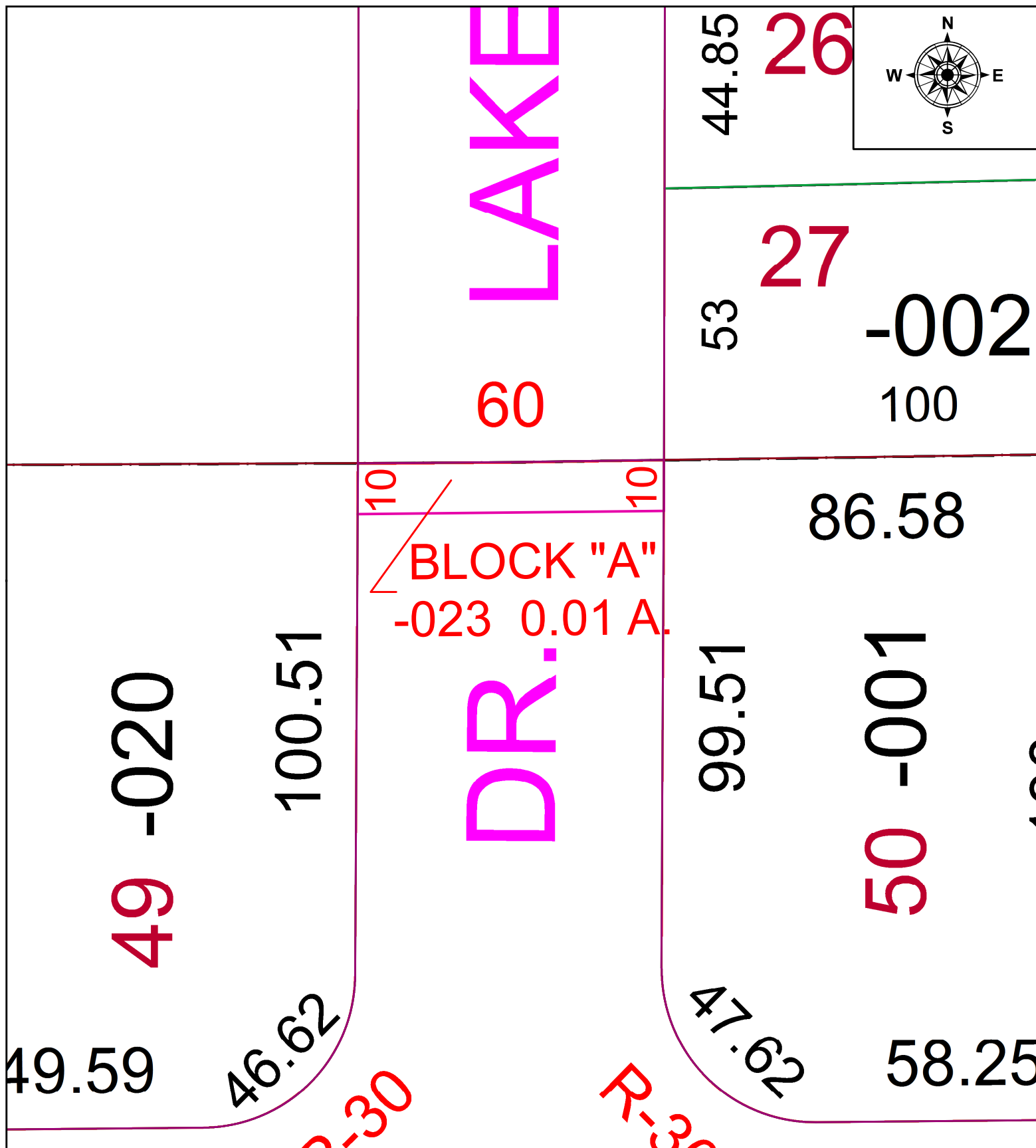


PARENT PARCEL: ADD TO DUPLICATE

CHILD PARCEL: 02-02-024-108-023

STARTING POINT: PV. 90 PG. 65

21-04603-A



SPLITS/DEEDS PROCESSED
 LORAIN COUNTY TAX MAP DEPARTMENT
 226 MIDDLE AVE. ELYRIA, OH

SURVEYED BY: J. RESAR
 CLOSURE: 1: 33,000
 MAP PAGE(S): 02-02-024
 APPROVED BY: TJS DATE: 7/2/2021
 SCALE: 1" = 25' PRIOR INSTRUMENT: PV. 90 PG. 65