

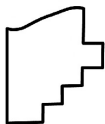
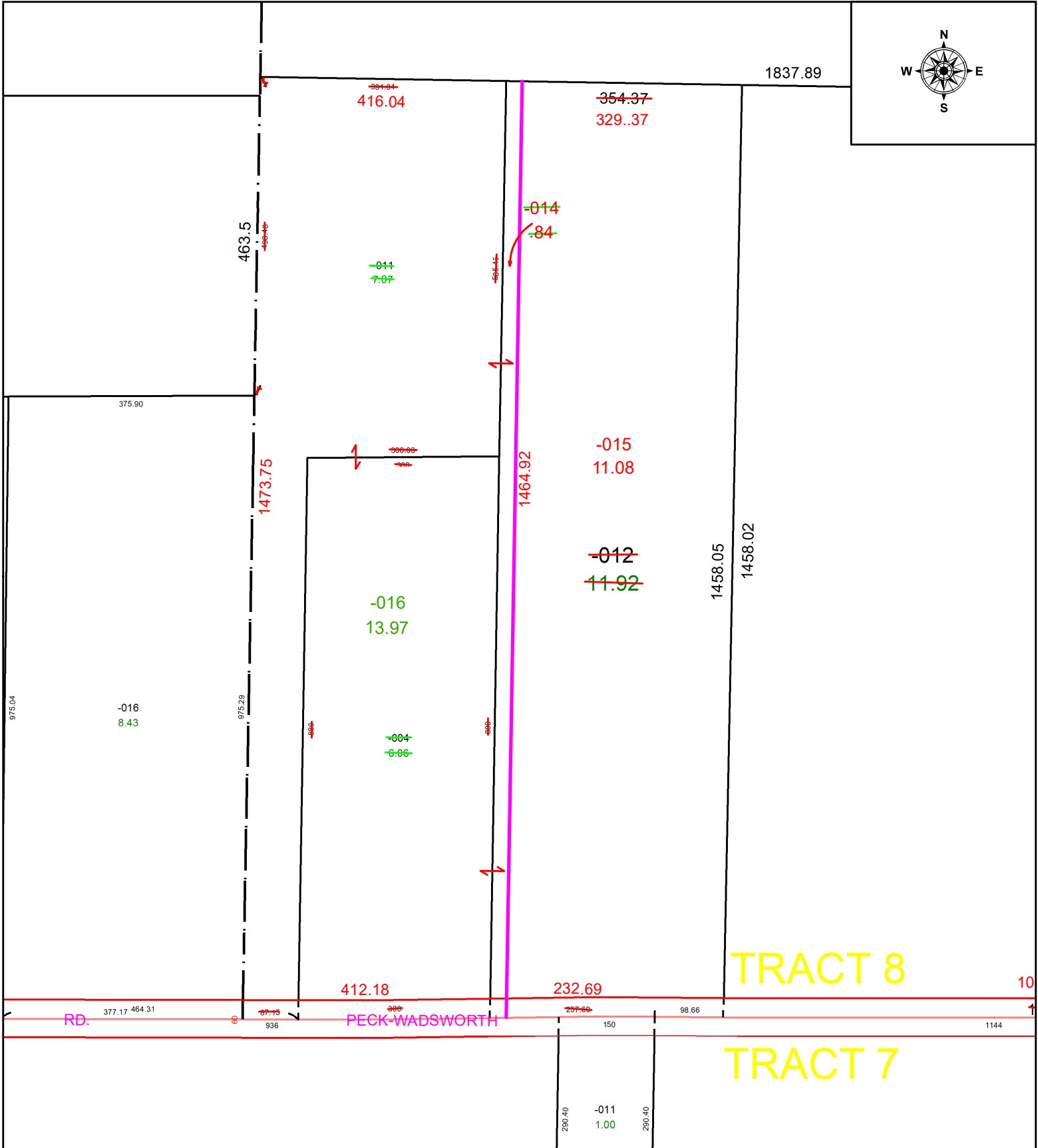
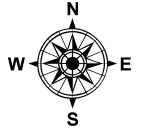
PARENT PARCEL: 17-08-033-000-004, -011, & -012

CHILD PARCEL: 17-08-033-000-014 THRU -016

N/A

22-04602

STARTING POINT: RAILROAD SPIKE @ INTERSECTION OF C/LS OF PECK WADSWORTH RD & SR 511



**SPLITS/DEEDS PROCESSED**  
 LORAIN COUNTY TAX MAP DEPARTMENT  
 226 MIDDLE AVE. ELYRIA, OH

SURVEYED BY: TIMOTHY HOZALSKI SURVEY # 50764  
 CLOSURE: 1: 576392  
 MAP PAGE(S): 17-08-033  
 APPROVED BY: WRZ DATE: 12/21/2022  
 SCALE: 1" = 200 PRIOR INSTRUMENT: #2021-0845933