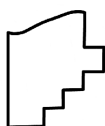
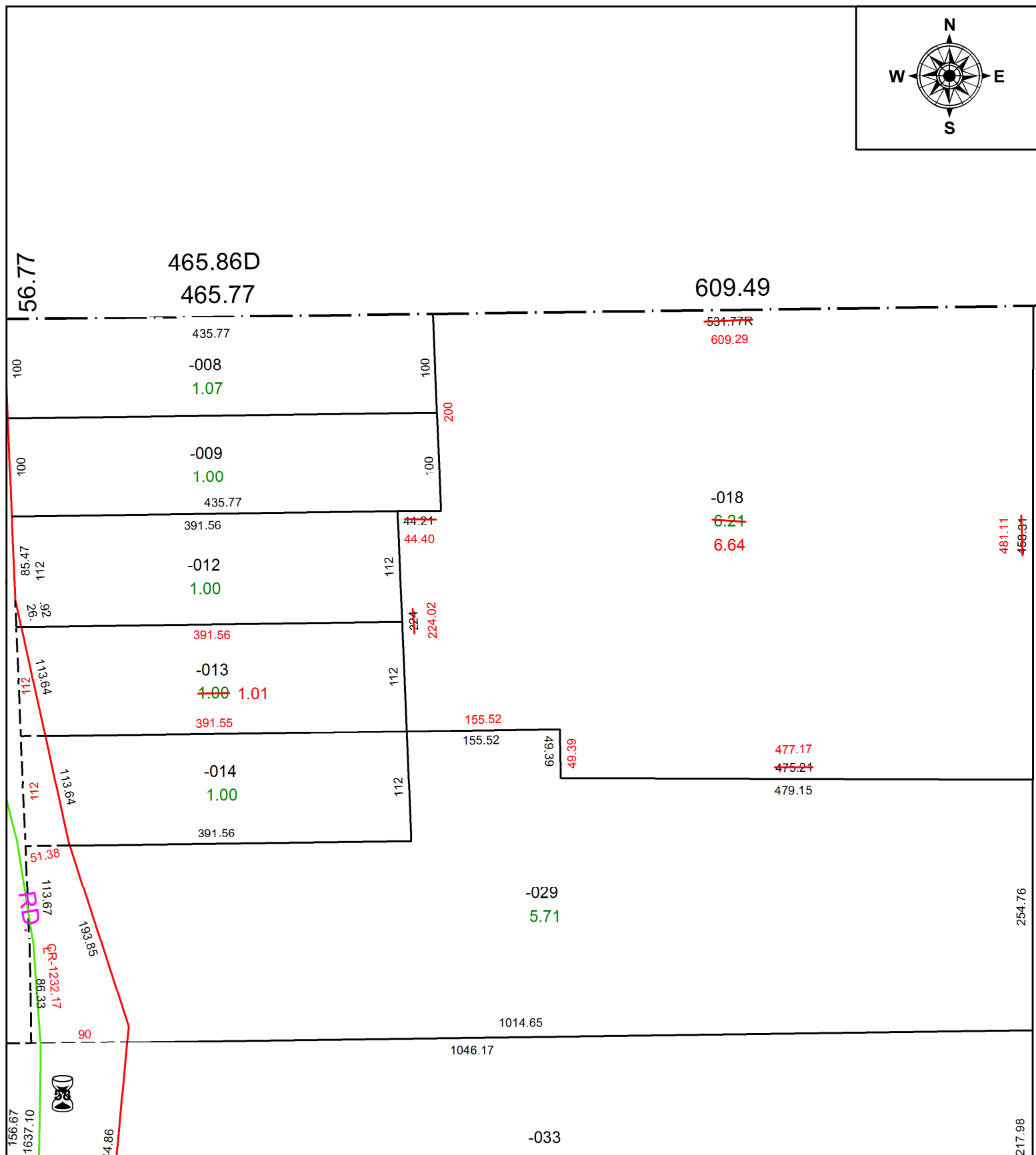
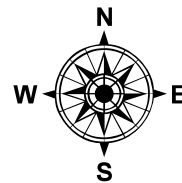


PARENT PARCEL: 14-00-156-000-013, -018

CHILD PARCEL: **ACREAGE CORRECTION PER SURVEY BY DANIEL P. ENGLE**

STARTING POINT: EAST LINE OF SR 58 AND NORTH LINE OF O/L 156

21-04602-C



**SPLITS/DEEDS PROCESSED**  
 LORAIN COUNTY TAX MAP DEPARTMENT  
 226 MIDDLE AVE. ELYRIA, OH

SURVEYED BY: DANIEL P. ENGLE  
 CLOSURE: 1: 511187  
 MAP PAGE(S): 14-00-156  
 APPROVED BY: AC DATE: 7/2/2021  
 SCALE: 1" = 130 PRIOR INSTRUMENT: 2021-0820062