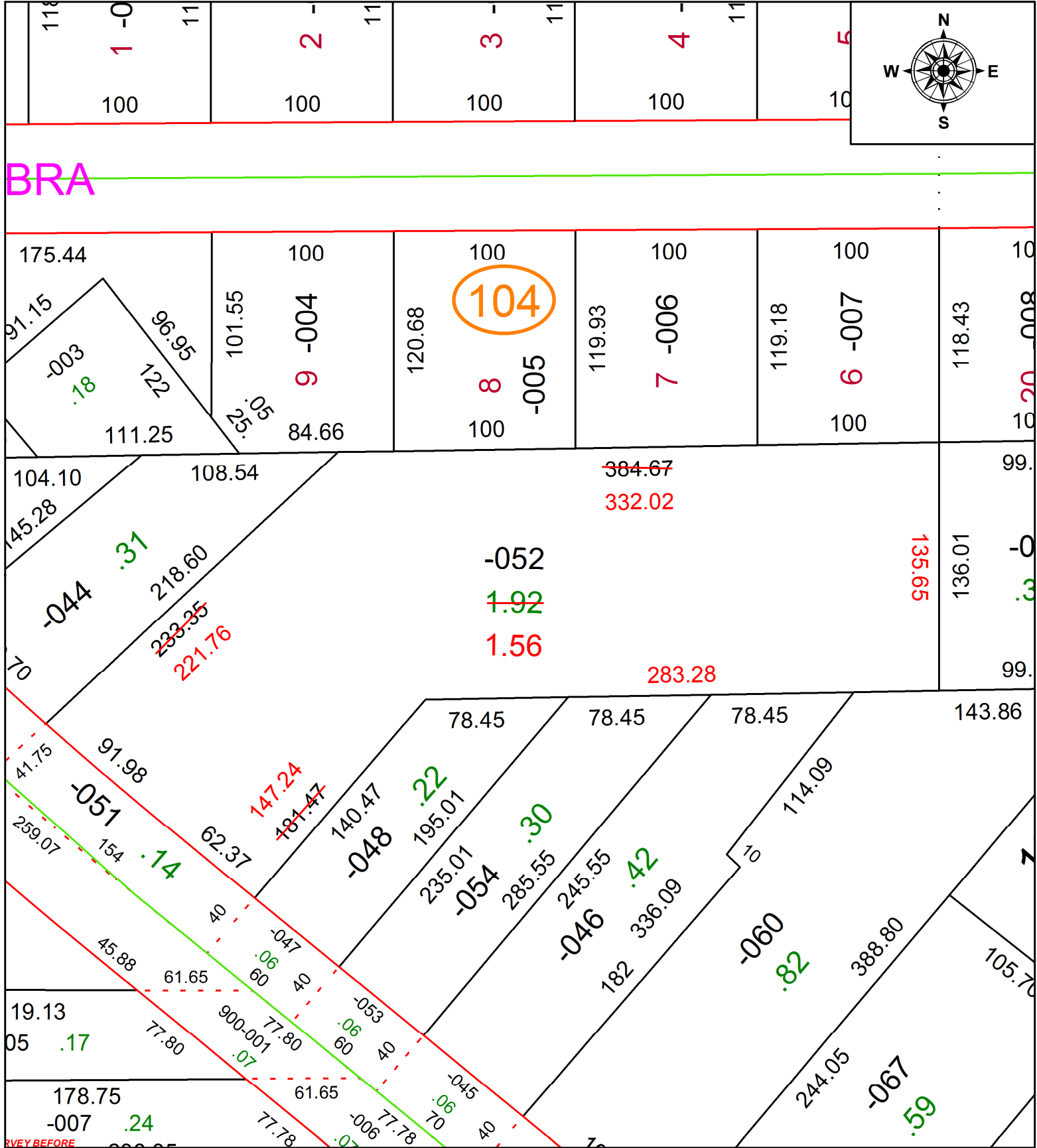


PARENT PARCEL: 06-23-008-104-052

CHILD PARCEL: _____

21-04601-D

STARTING POINT: **ACREAGE CORRECTION FROM 1.92 PER SURV BY THOMAS A. SIMON**



SPLITS/DEEDS PROCESSED
 LORAIN COUNTY TAX MAP DEPARTMENT
 226 MIDDLE AVE. ELYRIA, OH

SURVEYED BY: THOMAS A. SIMON
 CLOSURE: 1: 151168
 MAP PAGE(S): 06-024
 APPROVED BY: AC DATE: 7/2/2021
 SCALE: 1" = 70' PRIOR INSTRUMENT: DV 1156/414