

PARENT PARCEL:

01-00-017-000-149, -150, & -250

CHILD PARCEL:

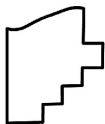
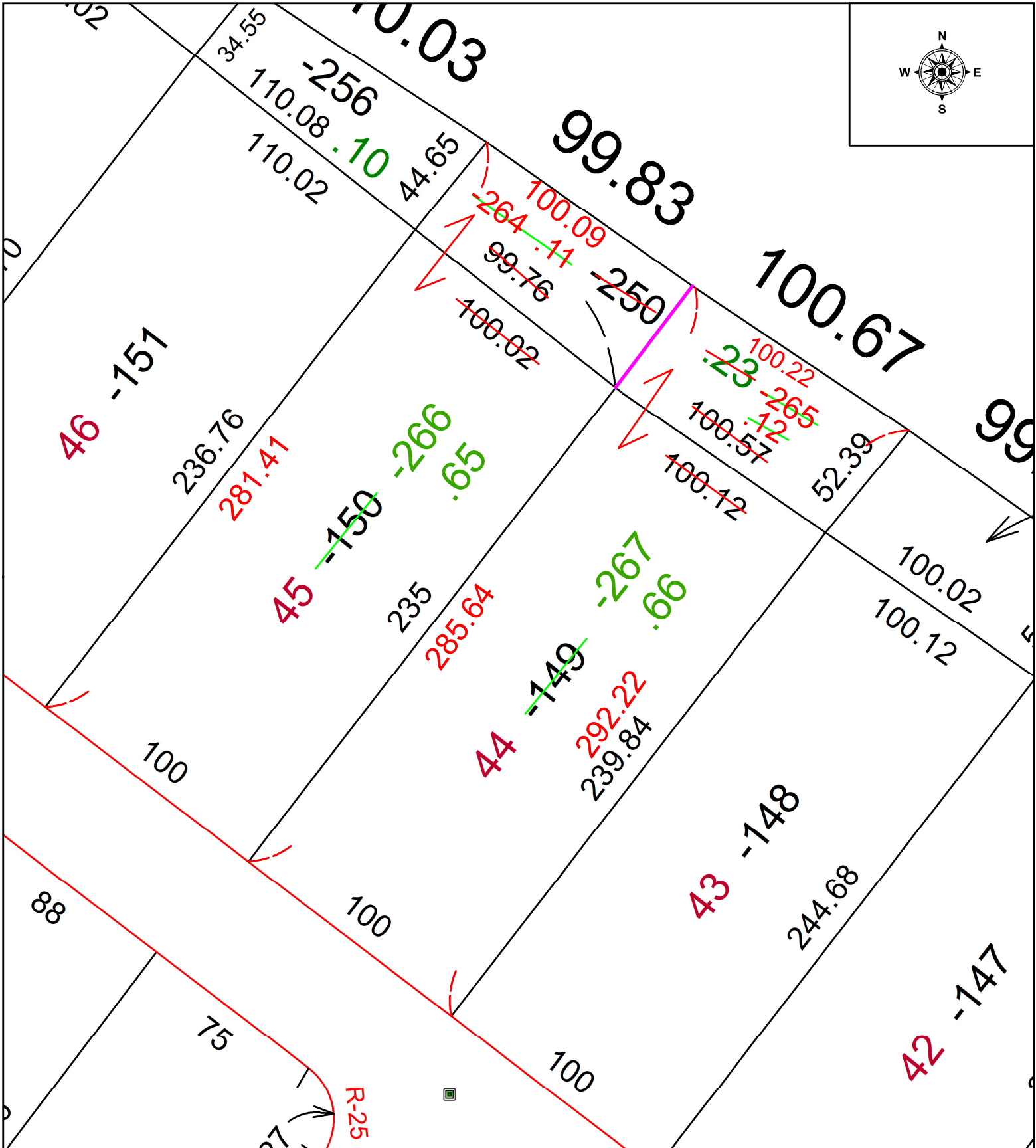
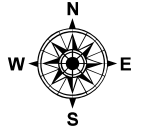
01-00-017-000-264 THRU -267

N/A

22-04596

STARTING POINT:

NORTHWEST CORNER OF S/L 45 IN WINDING RIVER ESTATES SUBDIVISION



SPLITS/DEEDS PROCESSED
 LORAIN COUNTY TAX MAP DEPARTMENT
 226 MIDDLE AVE. ELYRIA, OH

SURVEYED BY: THEODORE SPILLMAN

SURVEY # 50758

CLOSURE: 1: 43016

MAP PAGE(S): 01-00-017

APPROVED BY: WRZ DATE: 12/14/2022

SCALE: 1" = 50

PRIOR INSTRUMENT: #2009-0280404