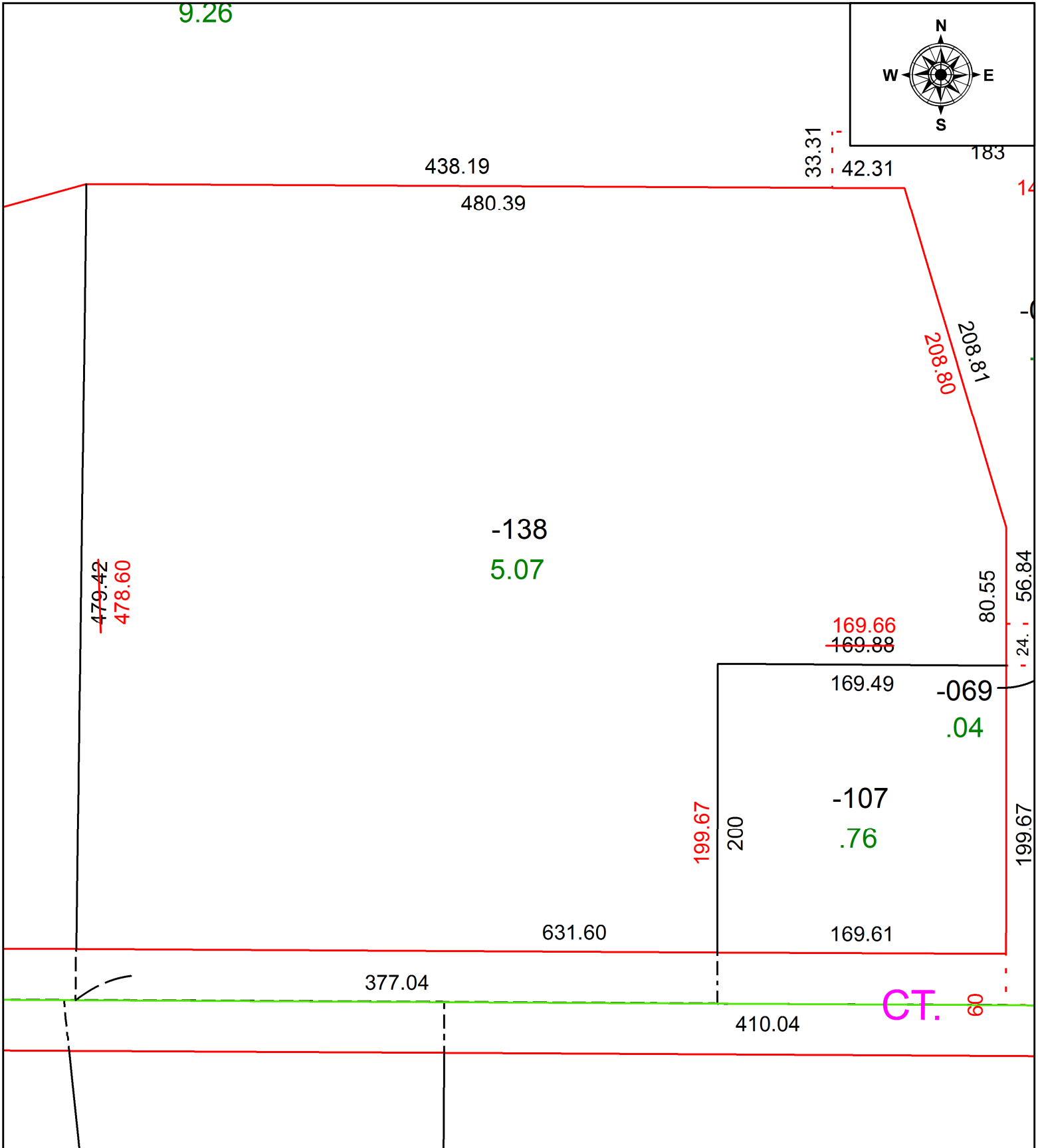


PARENT PARCEL: 10-00-013-000-138

CHILD PARCEL: MAP CORRECTION ONLY

STARTING POINT: INTERSECTION OF C/LS OF BUTTERNUT PARK CT & SR 301

21-04592-C



SPLITS/DEEDS PROCESSED
 LORAIN COUNTY TAX MAP DEPARTMENT
 226 MIDDLE AVE. ELYRIA, OH

SURVEYED BY: STEVEN J. METCALF

CLOSURE: 1:261,669

MAP PAGE(S): 10-00-013

APPROVED BY: WRZ DATE: 7/6/2021

SCALE: 1" = 75' PRIOR INSTRUMENT: 2016-0576370