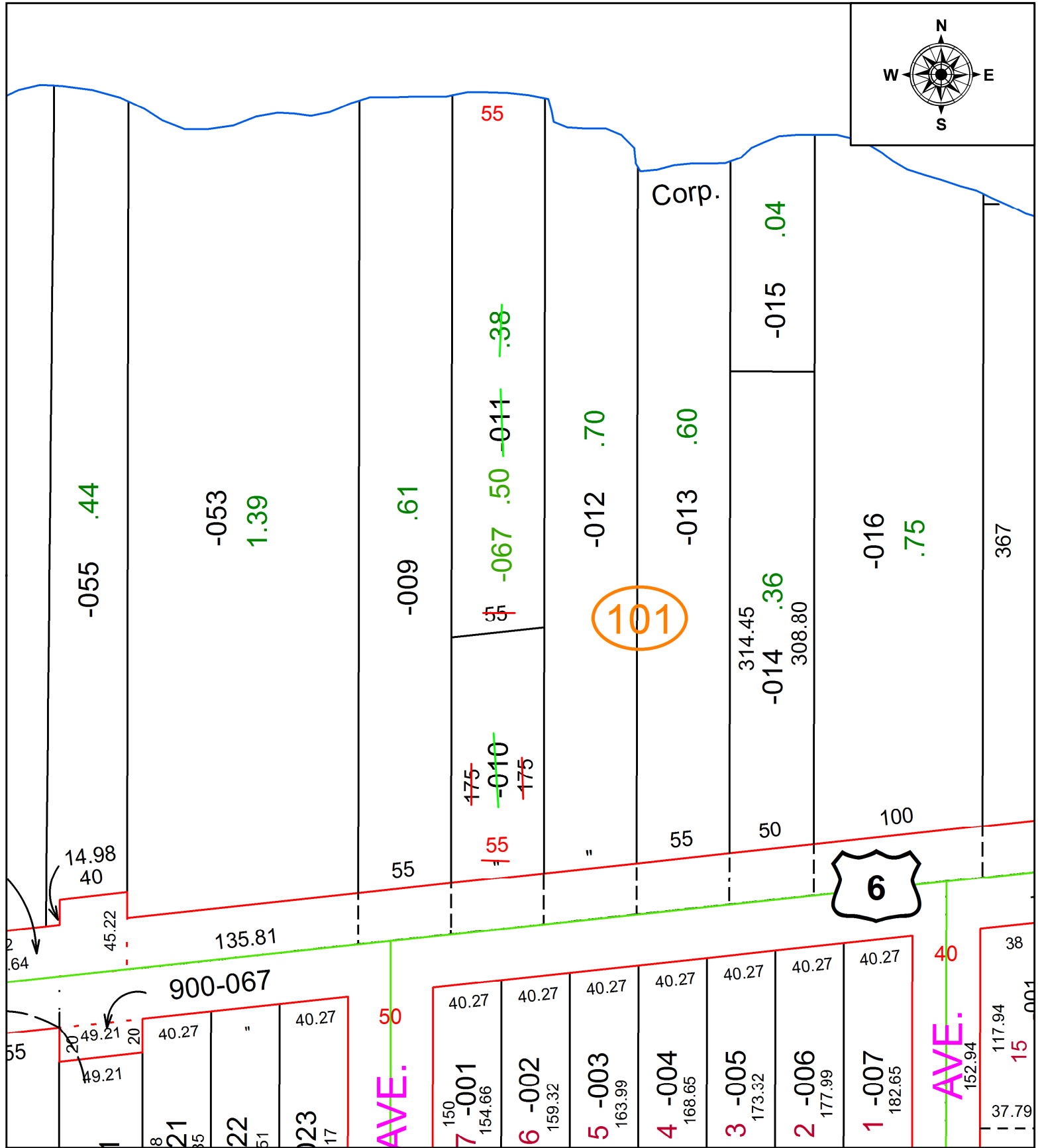
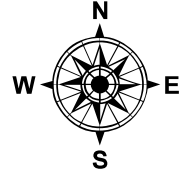


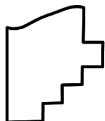
PARENT PARCEL: 04-00-019-101-010 & -011

CHILD PARCEL: 04-00-019-101-067

STARTING POINT: PER PRIOR DEED IN INSTR. #2011-0386830

21-04586-C



 **SPLITS/DEEDS PROCESSED**
 LORAIN COUNTY TAX MAP DEPARTMENT
 226 MIDDLE AVE. ELYRIA, OH

SURVEYED BY: _____ N/A
 CLOSURE: _____ N/A
 MAP PAGE(S): 04-00-019
 APPROVED BY: WRZ DATE: 6-23-2021
 SCALE: 1" = 75' PRIOR INSTRUMENT: 2011-0386830