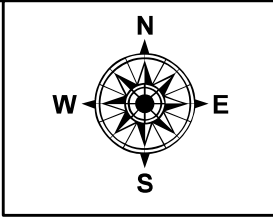
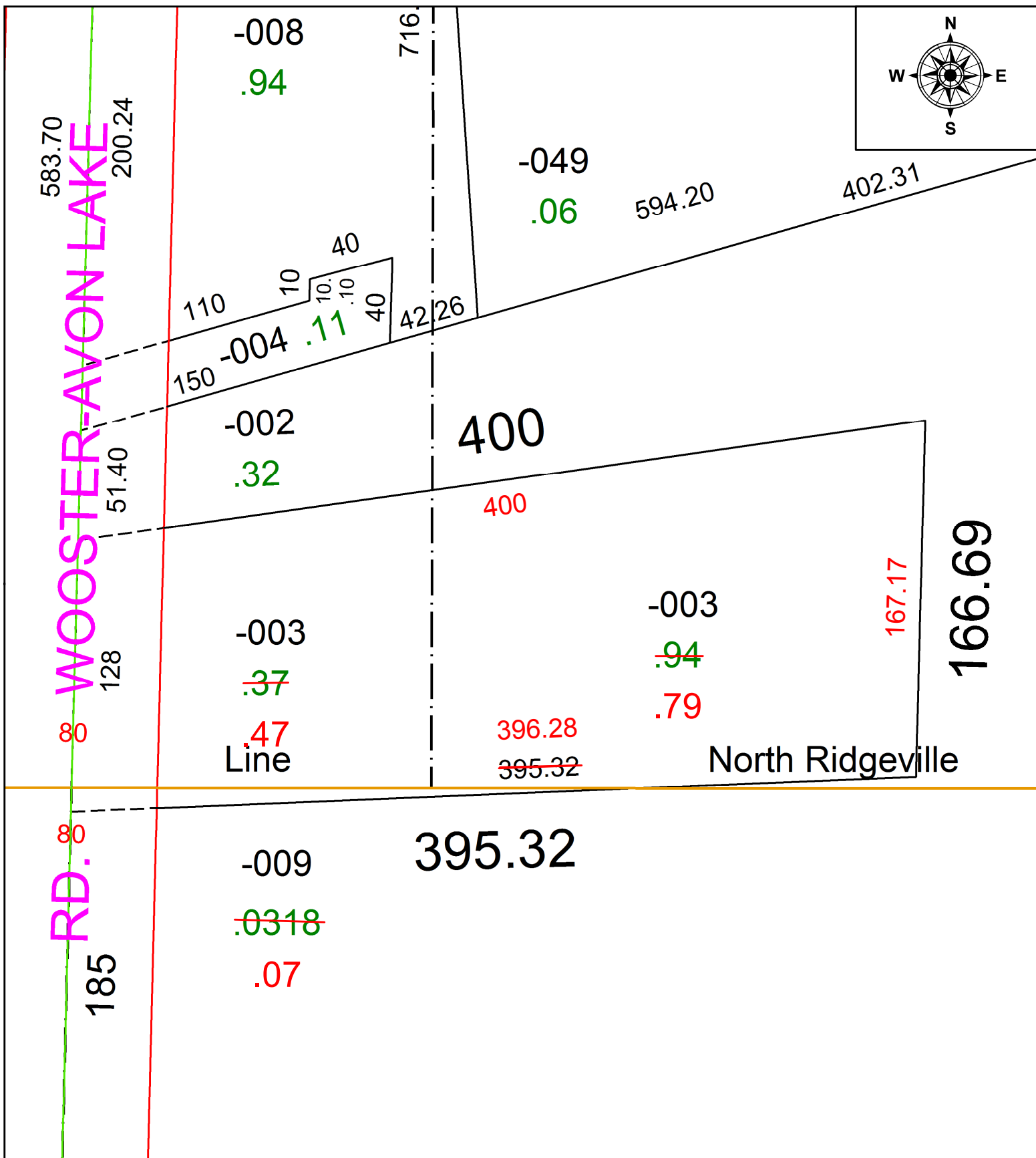


PARENT PARCEL: 07-00-024-102-003, 07-00-025-108-003, 11-00-050-000-009

CHILD PARCEL: **AC. CORR PER SURV BY THOMAS A. SIMON**

STARTING POINT: C/L OF BUTTNUT RIDGE ROAD AND AVON-BELDEN ROAD (SR 83)

21-04579-C



**SPLITS/DEEDS PROCESSED**  
 LORAIN COUNTY TAX MAP DEPARTMENT  
 226 MIDDLE AVE. ELYRIA, OH

SURVEYED BY: THOMAS A. SIMON  
 CLOSURE: 1: 209211  
 MAP PAGE(S): 07-00-024-C  
 APPROVED BY: AC DATE: 6/7/2021  
 SCALE: 1" = 60 PRIOR INSTRUMENT: 2010-0327600