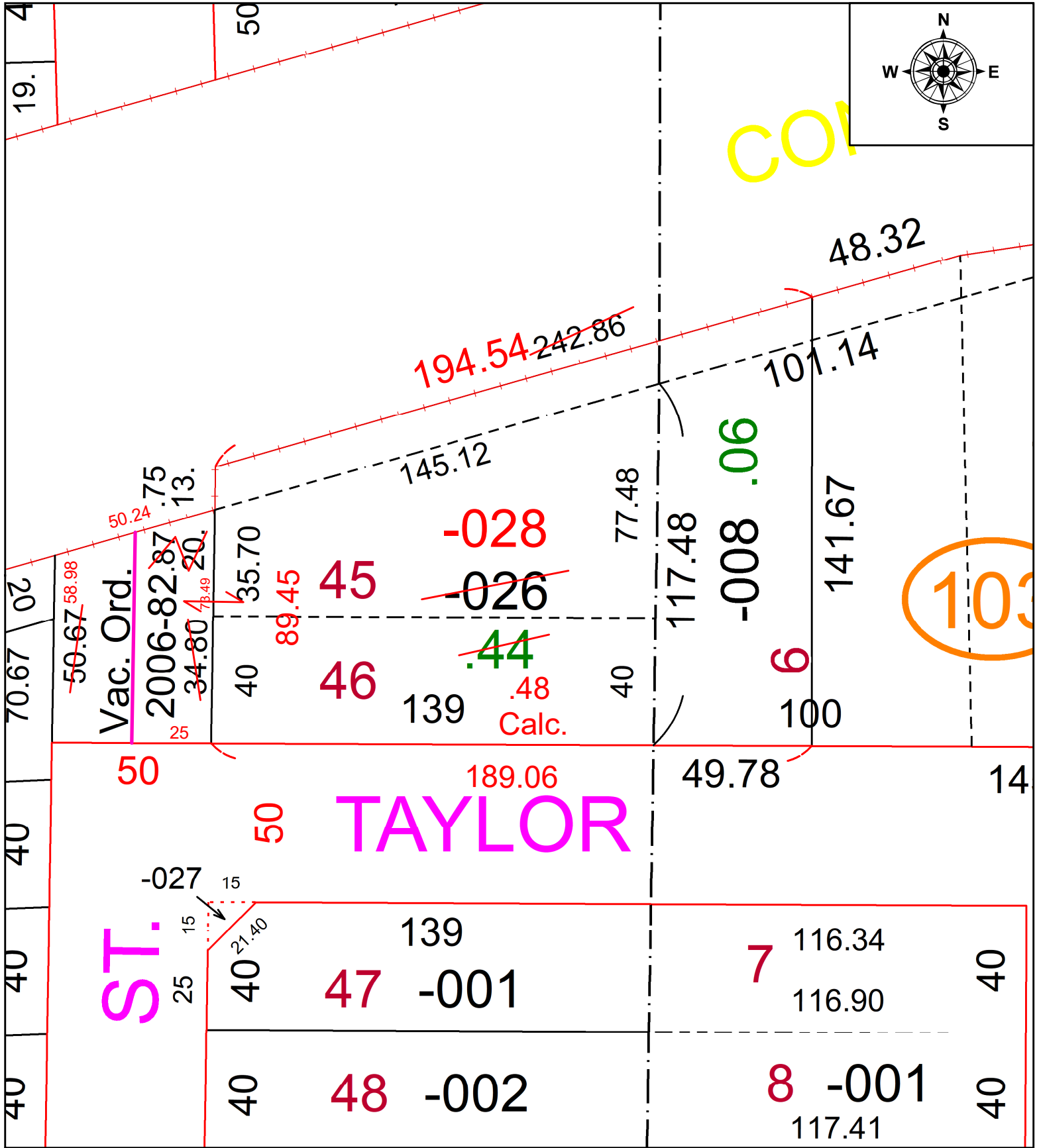


PARENT PARCEL: 06-25-016-106-026 & 06-25-015-103-008--St. Trans.

CHILD PARCEL: 06-25-016-106-028 Comb. w/ Vac. Ord. 2006-82

STARTING POINT: INTERSECTION OF NORTH SIDE TAYLOR ST. & EASTERLY SIDE OF WINKLES ST.

22-04574



**SPLITS/DEEDS PROCESSED**  
 LORAIN COUNTY TAX MAP DEPARTMENT  
 226 MIDDLE AVE. ELYRIA, OH

SURVEYED BY: KS ASSOCS. SURVEY #: N/A  
 CLOSURE: 1:159491  
 MAP PAGE(S): 06-25-015 & -016  
 APPROVED BY: DMA DATE: 10/17/2022  
 SCALE: 1" = 200' PRIOR INSTRUMENT: 2010-0359365