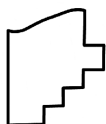
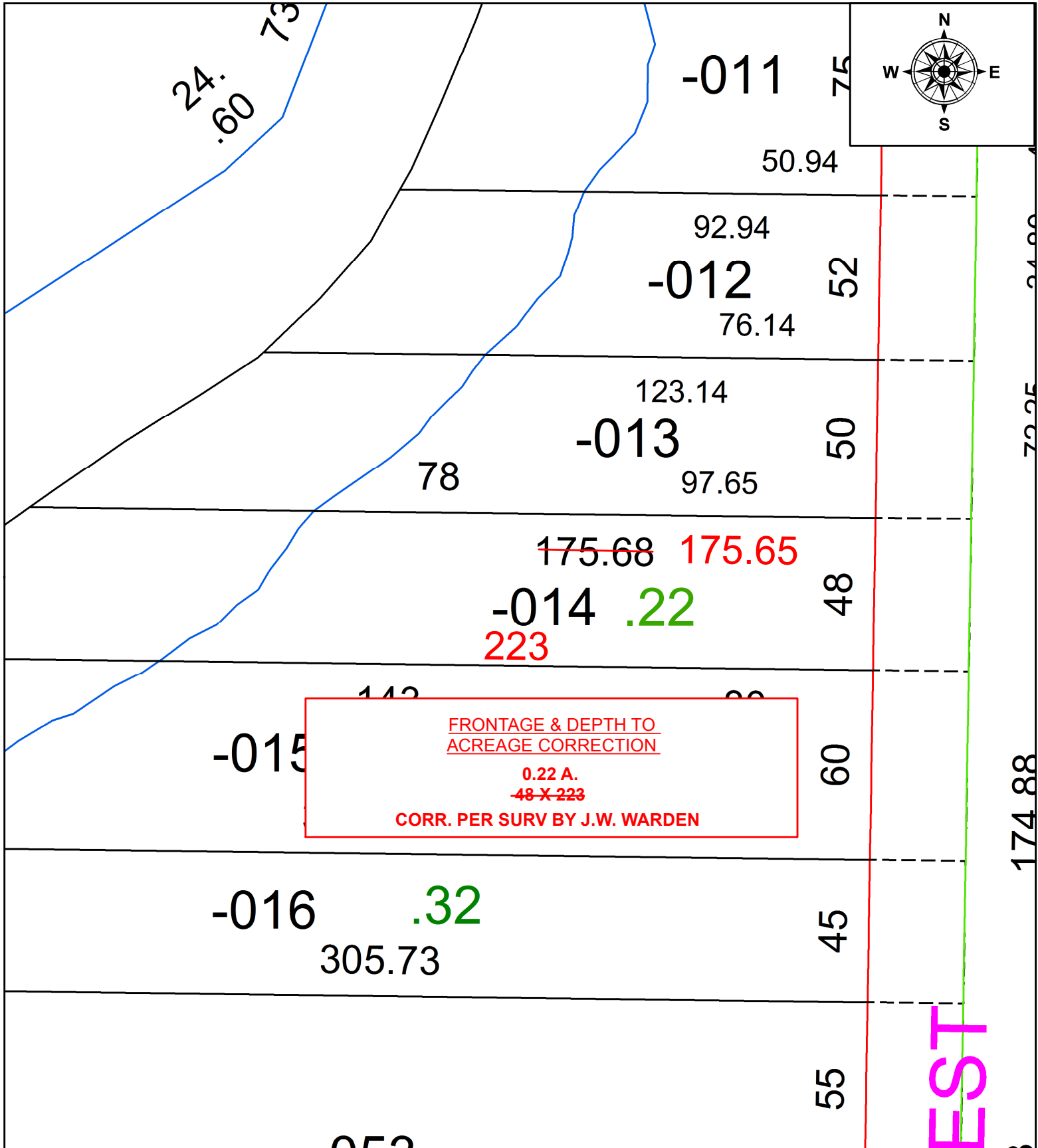


PARENT PARCEL: 10-00-003-115-014

CHILD PARCEL: _____

STARTING POINT: WESTERLY LINE OF WEST AVE AND NORTHERLY LINE OF 18TH ST

21-04561-D



SPLITS/DEEDS PROCESSED
LORAIN COUNTY TAX MAP DEPARTMENT
226 MIDDLE AVE. ELYRIA, OH

SURVEYED BY:	J.W. WARDEN
CLOSURE:	1: 35459
MAP PAGE(S):	10-00-003-C
APPROVED BY:	AC DATE: 5/17/2021
SCALE:	1" = 40' PRIOR INSTRUMENT: 2008-0270218