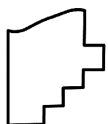
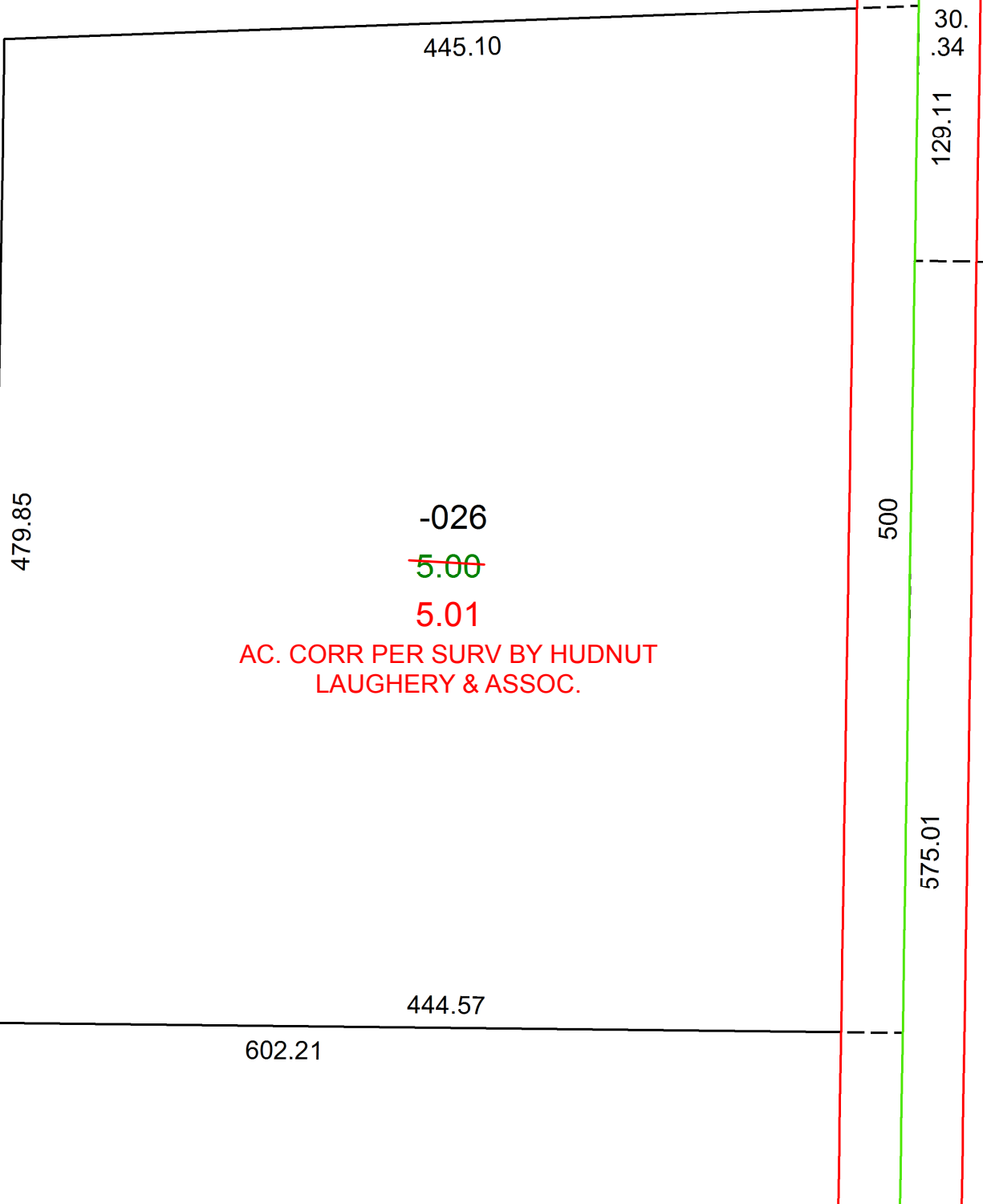


PARENT PARCEL: 21-15-000-000-026

CHILD PARCEL: _____

STARTING POINT: INTERSECTION OF STEWART AND HAWLEY ROAD

21-04560-A



SPLITS/DEEDS PROCESSED
 LORAIN COUNTY TAX MAP DEPARTMENT
 226 MIDDLE AVE. ELYRIA, OH

SURVEYED BY: HUDNUT- LAUGHERY & ASSOC.

CLOSURE: 1: 35459

MAP PAGE(S): 21-15-000-B

APPROVED BY: AC DATE: 5/17/2021

SCALE: 1" = 75 PRIOR INSTRUMENT: 1995-0347299