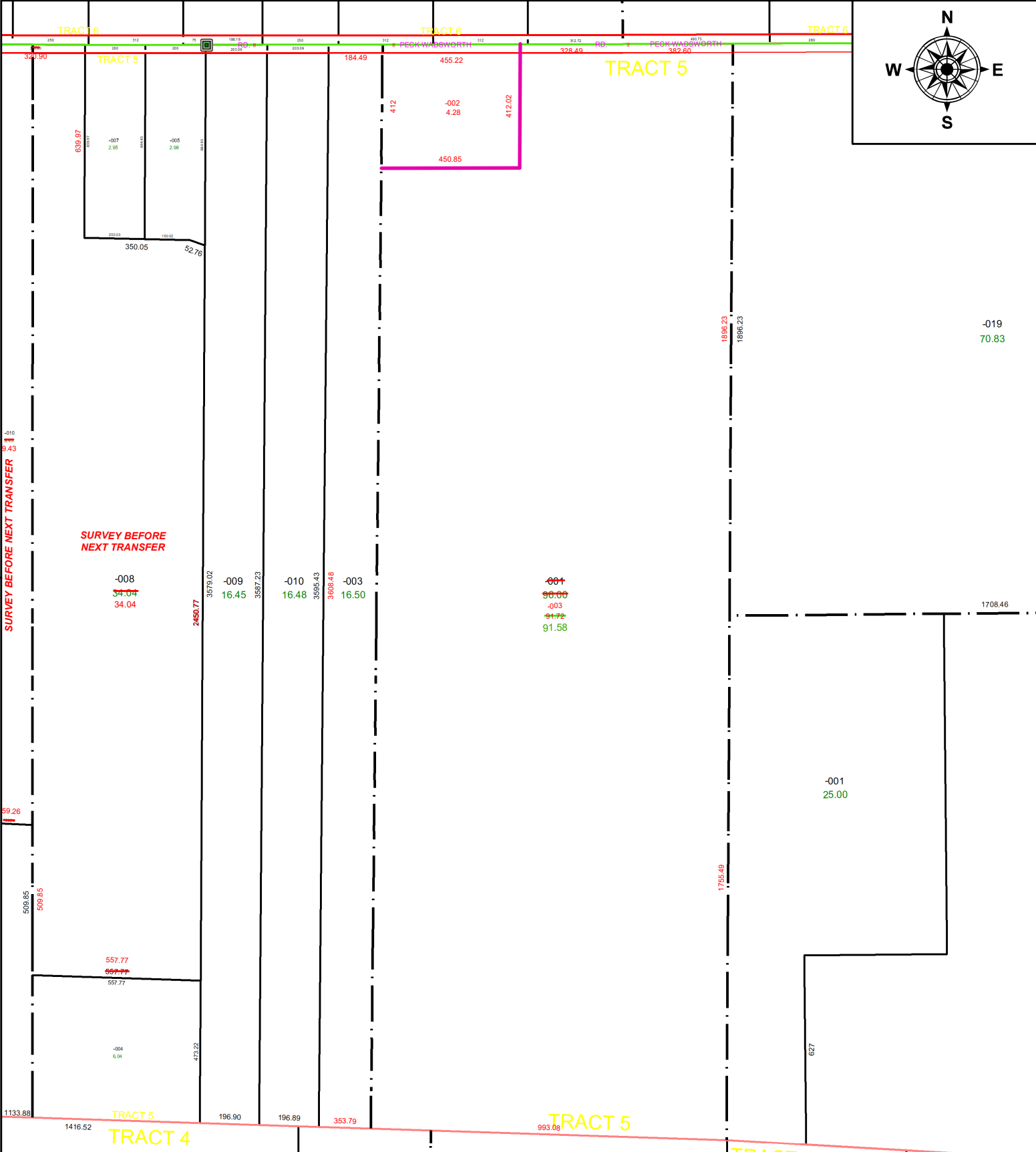


PARENT PARCEL: 19-05-015-000-001, 19-05-016-000-003

CHILD PARCEL: 19-05-015-000-002 & -003, 19-05-016-000-003

STARTING POINT: AC CORR PER SURV BY MATTHEW A. HILDEBRANDT

22-04559



SPLITS/DEEDS PROCESSED
 LORAIN COUNTY TAX MAP DEPARTMENT
 226 MIDDLE AVE. ELYRIA, OH

SURVEYED BY: MATTHEW A. HILDEBRANDT **SURV # 50697**
CLOSURE: 1: 328781
MAP PAGE(S): 19-05-015, -016
APPROVED BY: AC **DATE:** September 27, 2022
SCALE: 1 in = 425 ft **PRIOR INSTRUMENT:** 1979- 0039405