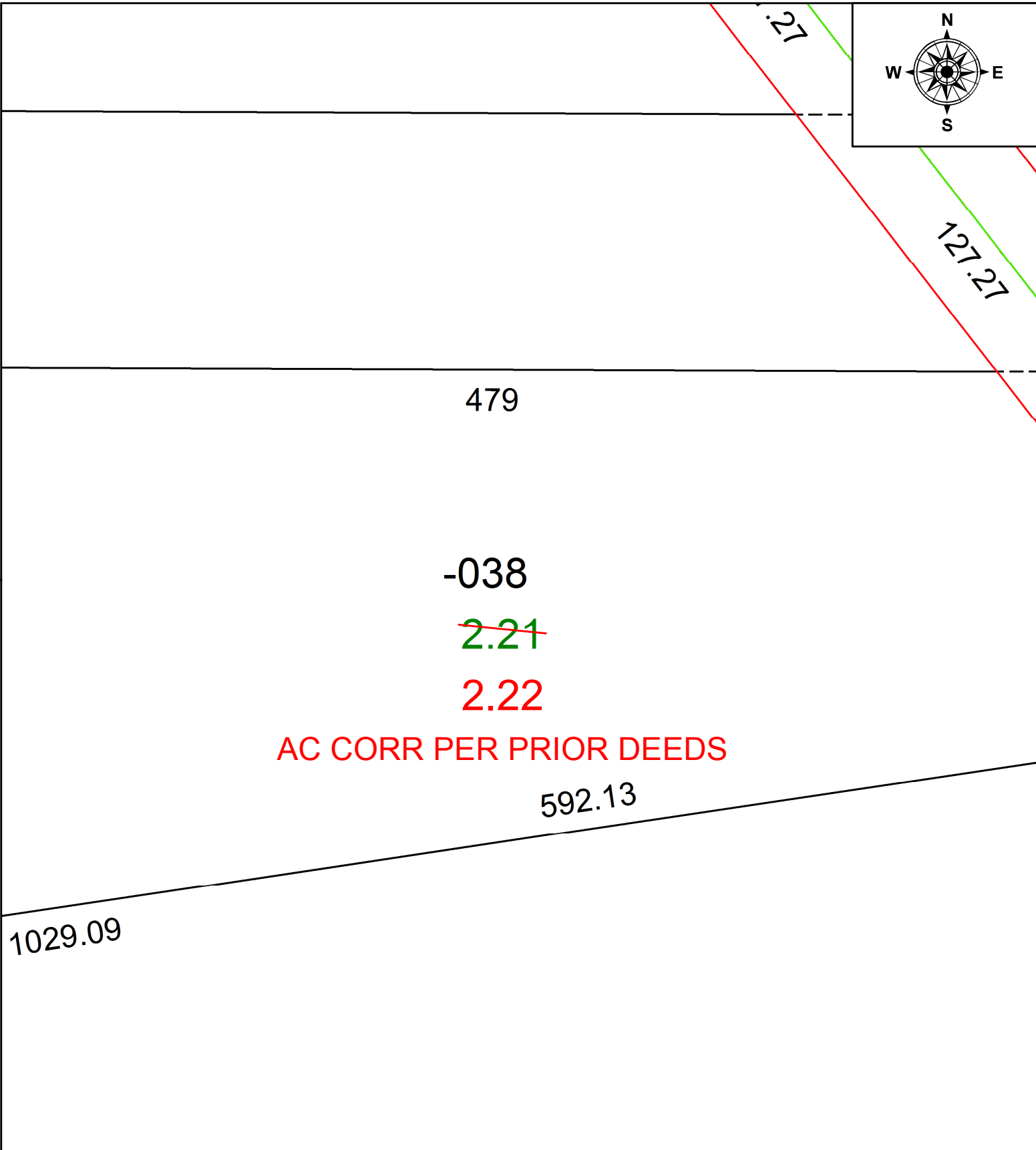


PARENT PARCEL: 12-00-099-000-038

CHILD PARCEL: \_\_\_\_\_

STARTING POINT: C/L of root road at se corner of land formely owned by Carl Stephens recorded in volume 294, pg 269

21-04556-A



479

-038

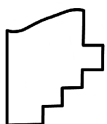
~~2.21~~

2.22

AC CORR PER PRIOR DEEDS

592.13

1029.09



**SPLITS/DEEDS PROCESSED**  
LORAIN COUNTY TAX MAP DEPARTMENT  
226 MIDDLE AVE. ELYRIA, OH

SURVEYED BY:	_____	N/A
CLOSURE:	1: 289036	
MAP PAGE(S):	12-00-099-A	
APPROVED BY:	AC	DATE: 5/14/2021
SCALE:	1" = 50	PRIOR INSTRUMENT: 2021-0804633