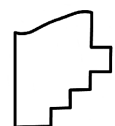
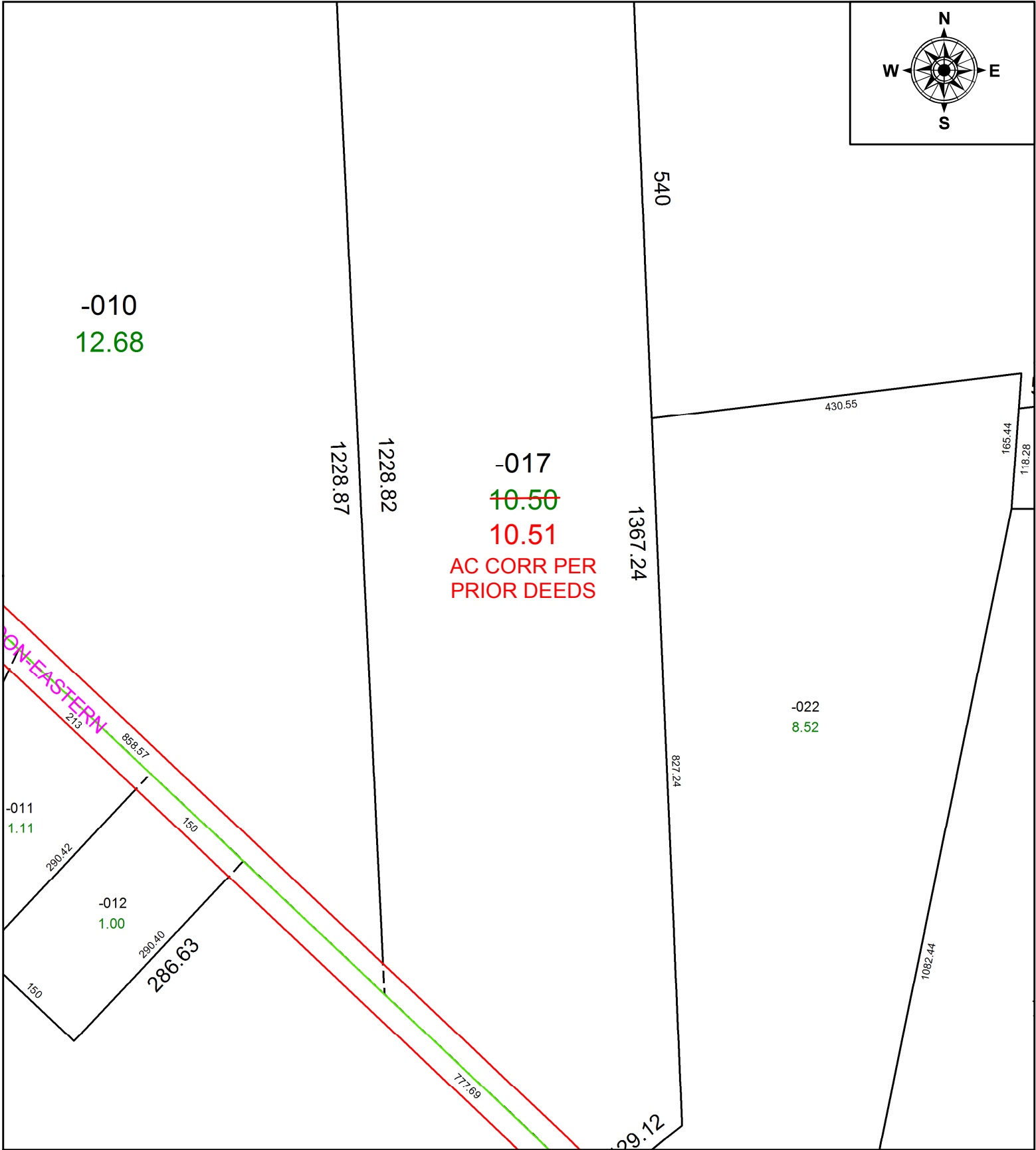
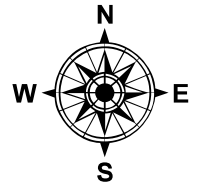


PARENT PARCEL: 20-20-009-000-017

CHILD PARCEL: \_\_\_\_\_

STARTING POINT: C/L OF NEW LONDON-EASTERN ROAD AND LAND RECORDED IN VOL 686, PG 178

21-04555-A



**SPLITS/DEEDS PROCESSED**  
 LORAIN COUNTY TAX MAP DEPARTMENT  
 226 MIDDLE AVE. ELYRIA, OH

SURVEYED BY: EDWARD G. BLACK  
 CLOSURE: 1: 1785955  
 MAP PAGE(S): 20-20-009-A  
 APPROVED BY: AC DATE: 5/14/2021  
 SCALE: 1" = 150 PRIOR INSTRUMENT: 2021-0805848