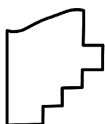
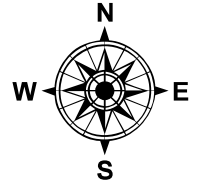
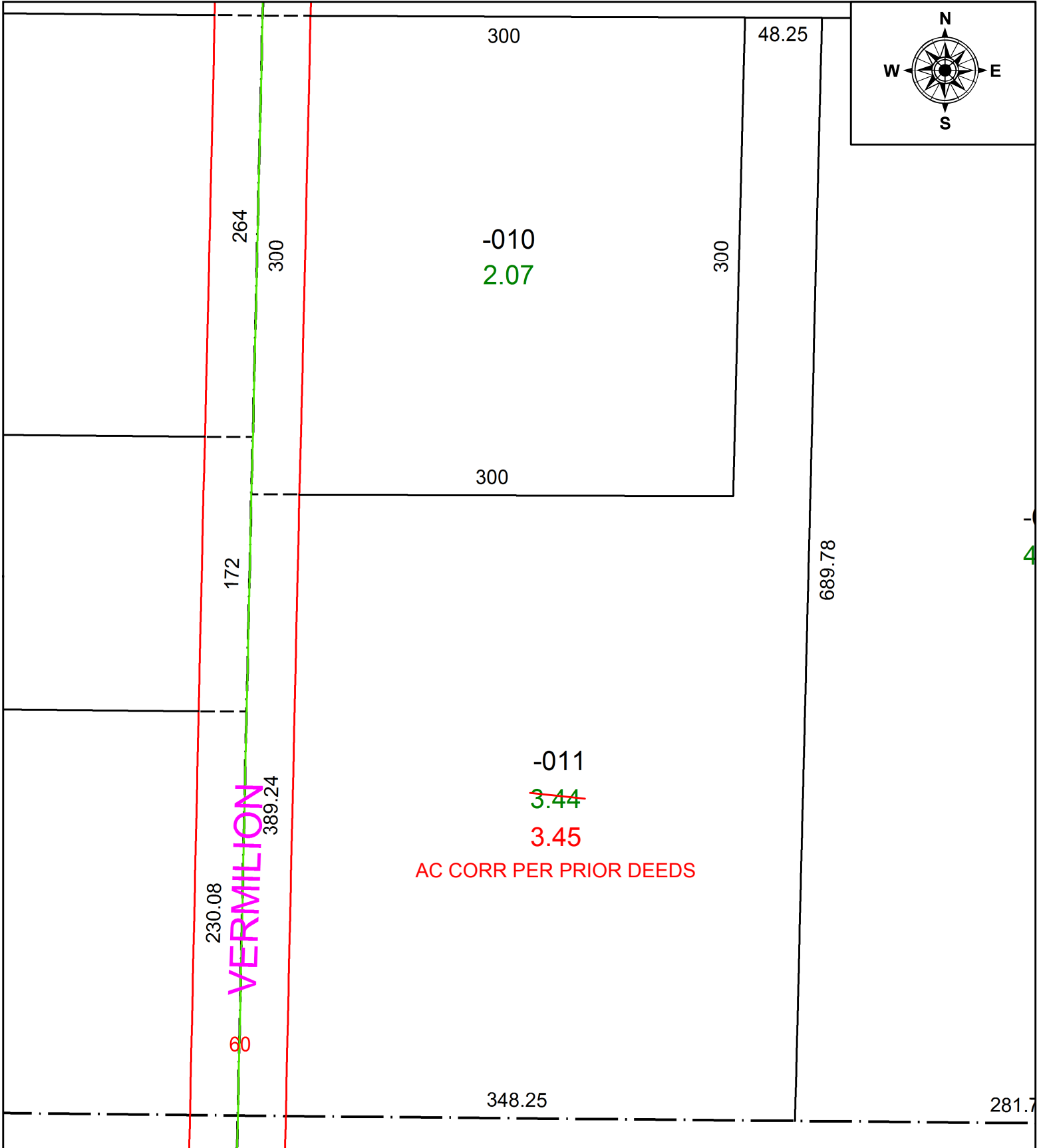


PARENT PARCEL: 08-15-002-000-011

CHILD PARCEL: _____

STARTING POINT: C/L OF VERMILION ROAD AT INTERSECTION OF SOUTH LINE OF ORIGINAL HENRIETTA TWP 2

21-04554-A



SPLITS/DEEDS PROCESSED
 LORAIN COUNTY TAX MAP DEPARTMENT
 226 MIDDLE AVE. ELYRIA, OH

SURVEYED BY: SCHAFFER, HURA AND ASSOC. INC.

CLOSURE: 1: 1785955

MAP PAGE(S): 08-15-002

APPROVED BY: AC **DATE:** 5/14/2021

SCALE: 1" = 80 **PRIOR INSTRUMENT:** 2021-0806359