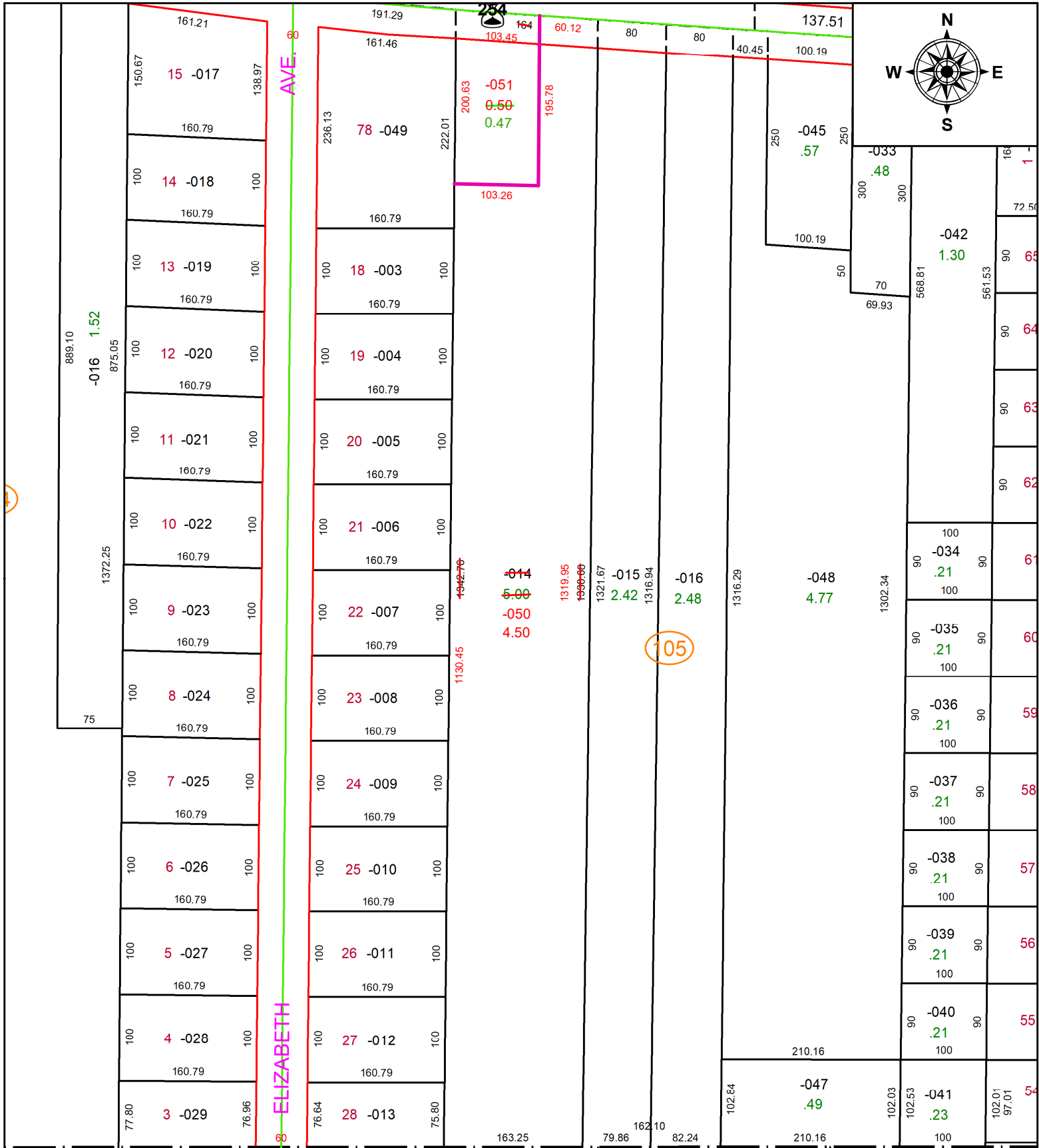


PARENT PARCEL: 04-00-022-105-014

CHILD PARCEL: 04-00-022-105-050 & -051

STARTING POINT: AC CORR PER SURV BY JOSEPH A. BURGOON

22-04553



SPLITS/DEEDS PROCESSED
 LORAIN COUNTY TAX MAP DEPARTMENT
 226 MIDDLE AVE. ELYRIA, OH

SURVEYED BY: JOSEPH A. BURGOON **SURV #** 50691
CLOSURE: 1: 409430
MAP PAGE(S): 04-00-022-G
APPROVED BY: AC **DATE:** September 16, 2022
SCALE: 1 in = 150 ft **PRIOR INSTRUMENT:** 2021- 0799633