

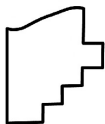
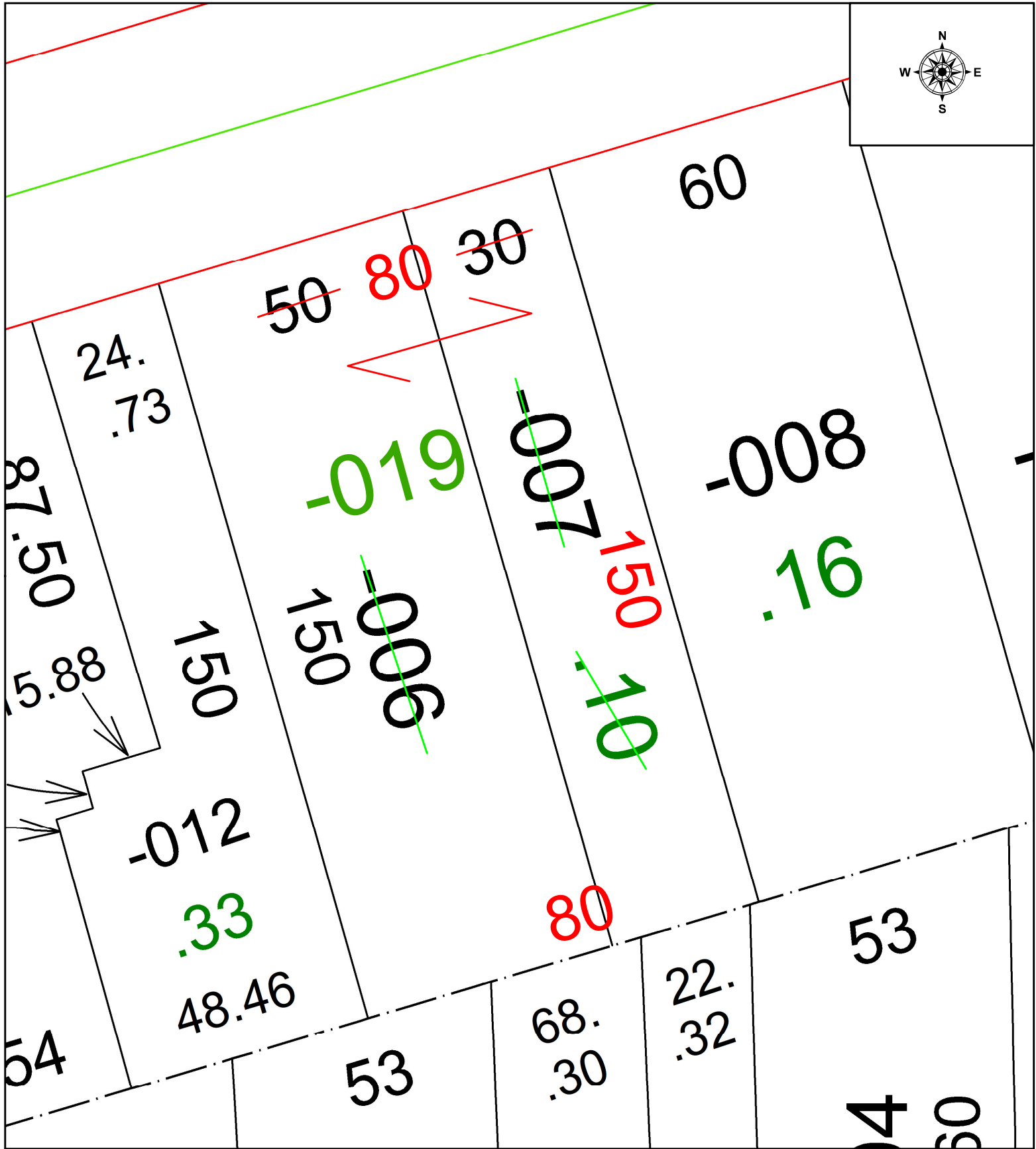
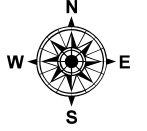
PARENT PARCEL: 06-25-080-000-006 & -007

CHILD PARCEL: 06-25-080-000-019

COMBINATION PER PRIOR DEED DV 302/501

22-04550

STARTING POINT: N/A



SPLITS/DEEDS PROCESSED
 LORAIN COUNTY TAX MAP DEPARTMENT
 226 MIDDLE AVE. ELYRIA, OH

SURVEYED BY: N/A SURVEY # N/A
 CLOSURE: N/A
 MAP PAGE(S): 06-25-080
 APPROVED BY: WRZ DATE: 9/2/2022
 SCALE: 1" = 25' PRIOR INSTRUMENT: DV 302/501