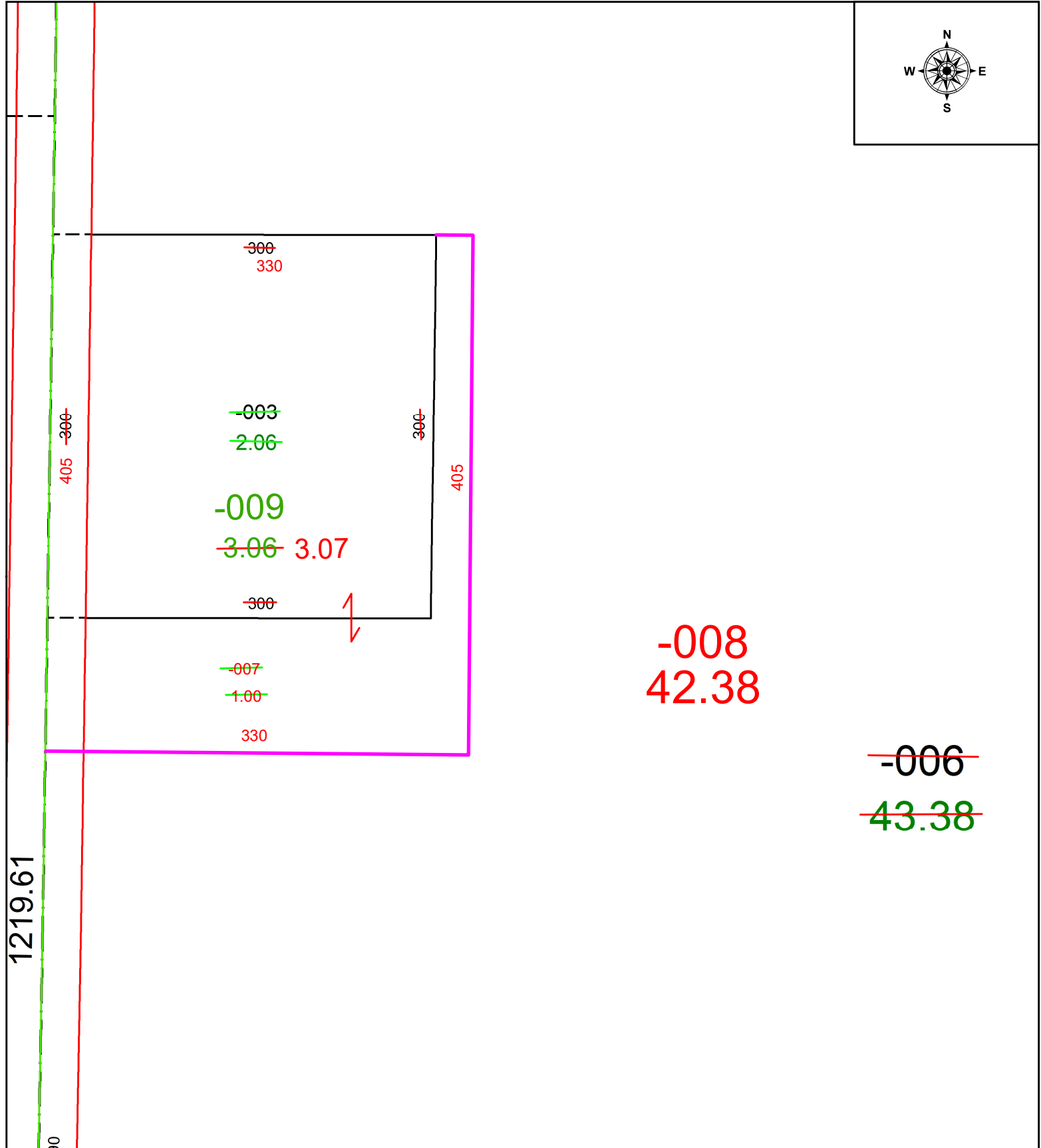
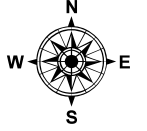


PARENT PARCEL: 13-08-016-000-003 & -006

CHILD PARCEL: 13-08-016-000-007, -008, & -009 ACREAGE CORRECTION PER SURVEYOR THOMAS SNEZEK

STARTING POINT: IRON SPIKE @ C/L OF BAIRD RD AND SOUTHWEST CORNER OF O.L. 16

22-04548



SPLITS/DEEDS PROCESSED
 LORAIN COUNTY TAX MAP DEPARTMENT
 226 MIDDLE AVE. ELYRIA, OH

SURVEYED BY: THOMAS SNEZEK SURVEY # 50683
 CLOSURE: 1: -2147483648
 MAP PAGE(S): 13-08-016
 APPROVED BY: WRZ DATE: 8/30/2022
 SCALE: 1" = 125 PRIOR INSTRUMENT: DV 1282, PG. 412