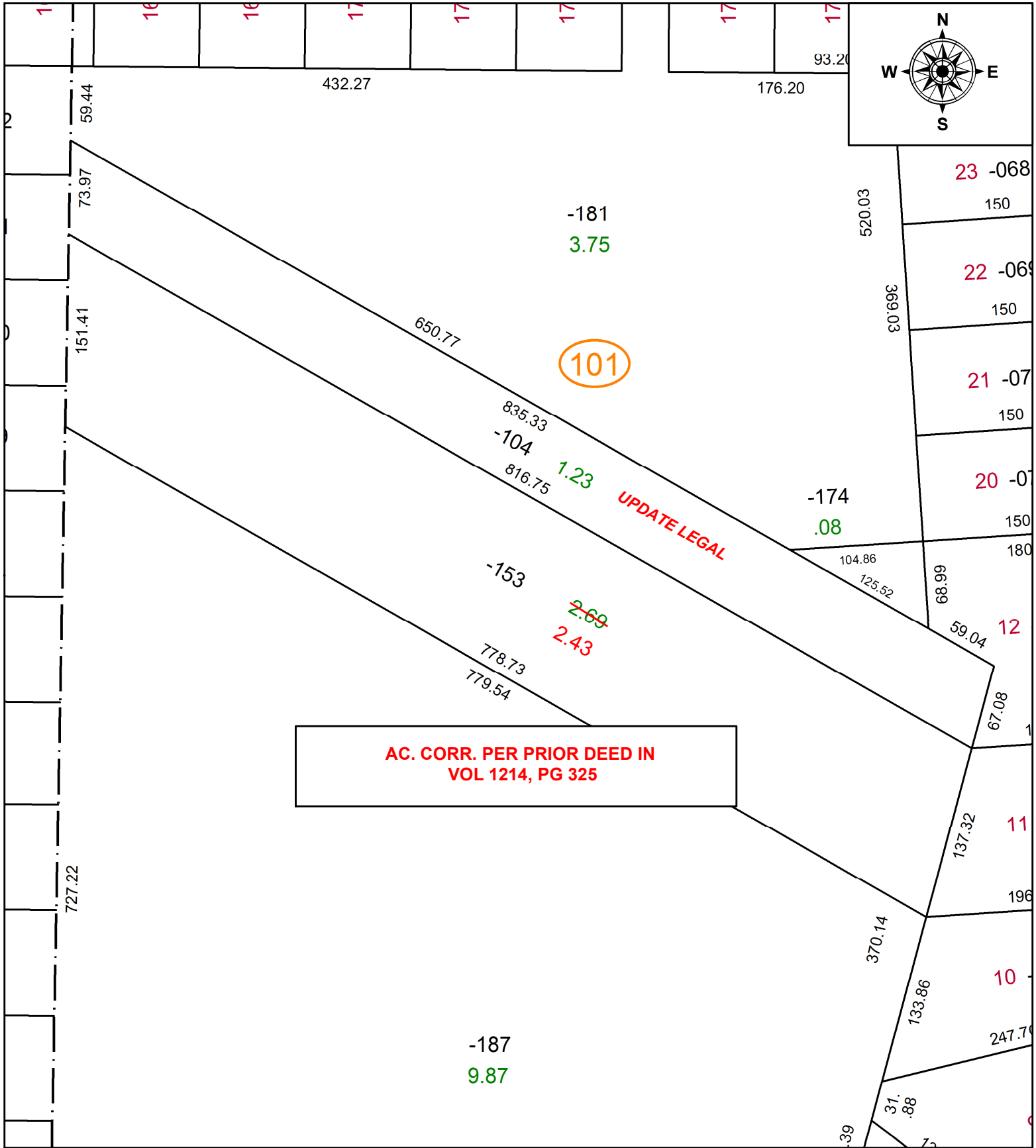


PARENT PARCEL: 05-00-063-101-153

CHILD PARCEL: \_\_\_\_\_

STARTING POINT: C/L OF ROSEDALE AVE AT NE CORNER OF SUBLot 12 VOL 21 PG 40

21-04548-A



AC. CORR. PER PRIOR DEED IN  
VOL 1214, PG 325

101

UPDATE LEGAL

**SPLITS/DEEDS PROCESSED**

LORAIN COUNTY TAX MAP DEPARTMENT  
226 MIDDLE AVE. ELYRIA, OH

SURVEYED BY: GARY E. PENFOUND

CLOSURE: 1: 1023005

MAP PAGE(S): 05-00-063

APPROVED BY: AC DATE: 5/11/2021

SCALE: 1" = 100 PRIOR INSTRUMENT: 1978-0999762

