

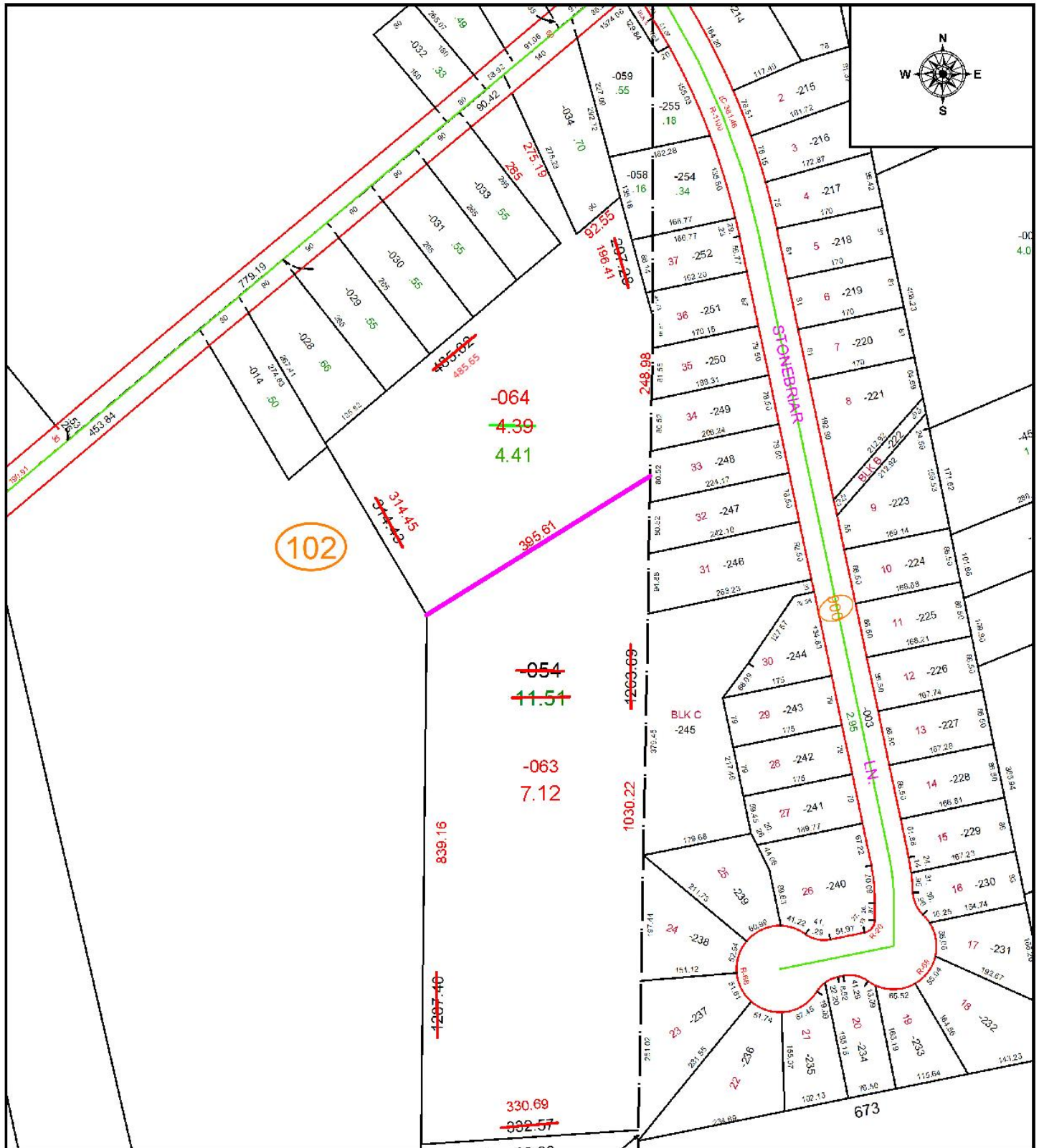
PARENT PARCEL: 07-00-024-102-054

CHILD PARCEL: 07-00-024-102-063 & -064

STARTING POINT: INTERSECTION @ C/L'S OF LORAIN RD & EAST LINE OF O.L. 24

ACREAGE CORRECTION PER WILFREDO BARBOSA

22-04540



102

100

673



SPLITS/DEEDS PROCESSED
 LORAIN COUNTY TAX MAP DEPARTMENT
 226 MIDDLE AVE. ELYRIA, OH

SURVEYED BY: WILFREDO BARBOSA **SURVEY #** 50670
CLOSURE: 1: 459062
MAP PAGE(S): 07-00-024
APPROVED BY: WRZ **DATE:** 8/17/2022
SCALE: 1" = 200 **PRIOR INSTRUMENT:** DV 81 P. 58