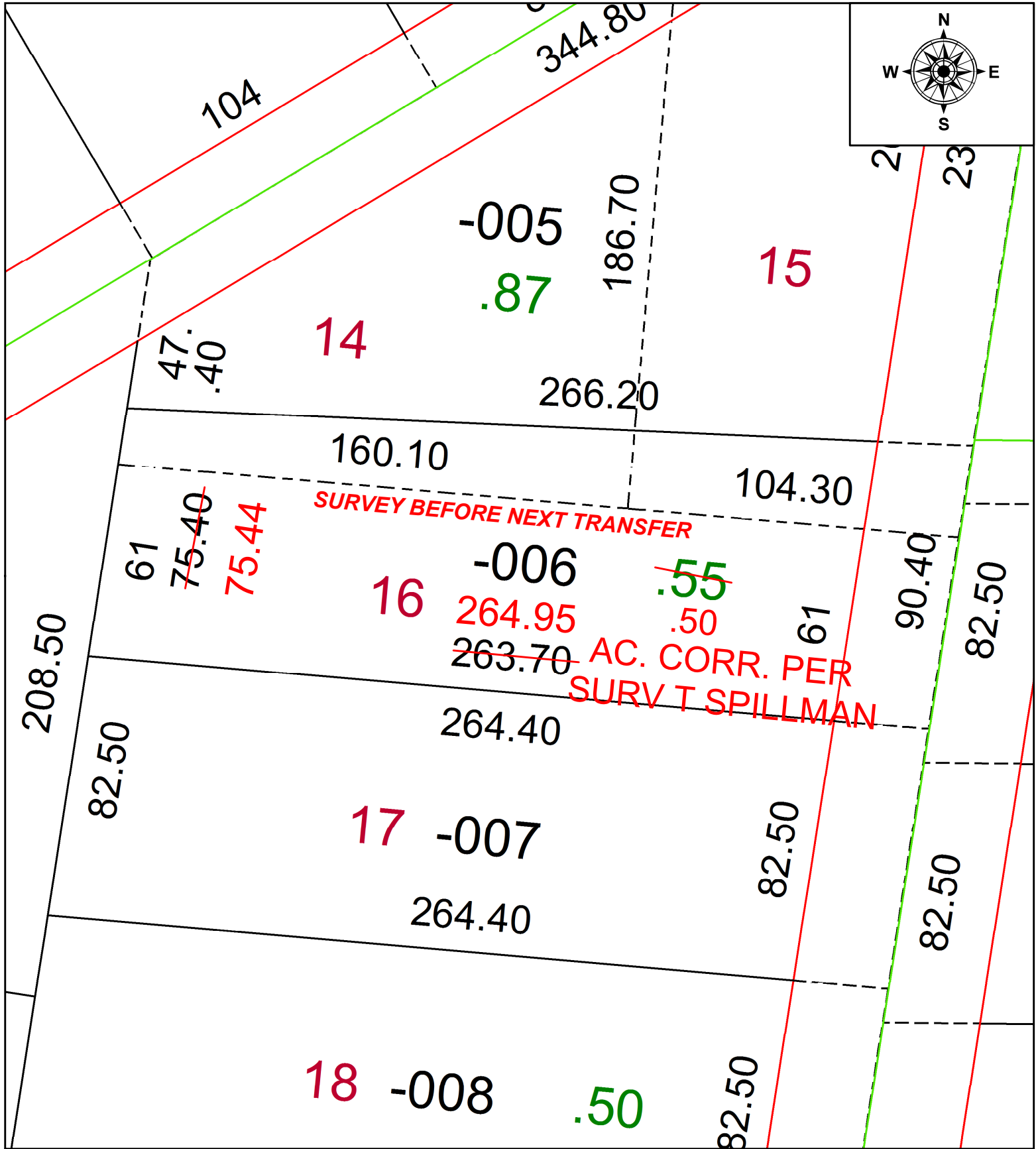


PARENT PARCEL: 05-00-091-106-006

CHILD PARCEL: _____

STARTING POINT: CENTERLINE OF LEONARD ST AND SE CORNER OF SL 16.

21-04540-D



SPLITS/DEEDS PROCESSED
 LORAIN COUNTY TAX MAP DEPARTMENT
 226 MIDDLE AVE. ELYRIA, OH

SURVEYED BY: TED J. SPILLMAN
 CLOSURE: 1: 4143505
 MAP PAGE(S): 12-00-045-B
 APPROVED BY: AC DATE: 5-3-2021
 SCALE: 1" = 40' PRIOR INSTRUMENT: 2017-0651384