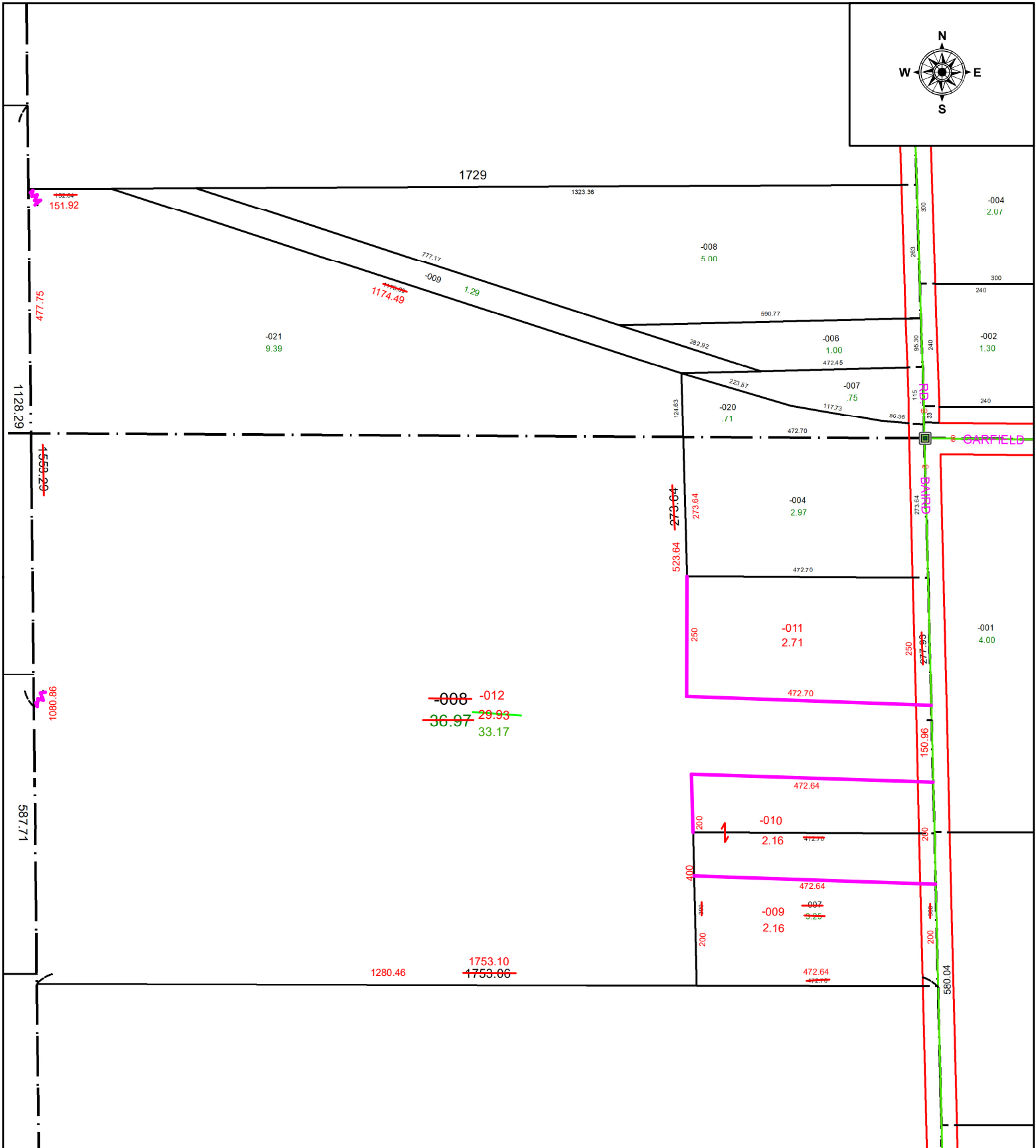
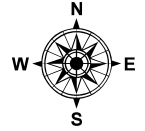


PARENT PARCEL: 08-14-013-000-007, -008 & 08-14-008-000-021

CHILD PARCEL: 08-14-013-000-009 THRU -012, & 08-14-008-000-021 **ACREAGE CORRECTION PER THOMAS SIMON**

22-04539

STARTING POINT: **MONUMENT @ INTERSECTION OF C/L'S OF GARFIELD RD & BAIRD RD**



SPLITS/DEEDS PROCESSED
LORAIN COUNTY TAX MAP DEPARTMENT
226 MIDDLE AVE. ELYRIA, OH

SURVEYED BY: THOMAS SIMON SURVEY # 50667
CLOSURE: 1:-2147483648
MAP PAGE(S): 08-14-013 & 08-14-008
APPROVED BY: WRZ DATE: 8/12/2022
SCALE: 1" = 250 PRIOR INSTRUMENT: 2017-0631933